



Import & Export Price Indices December 2024

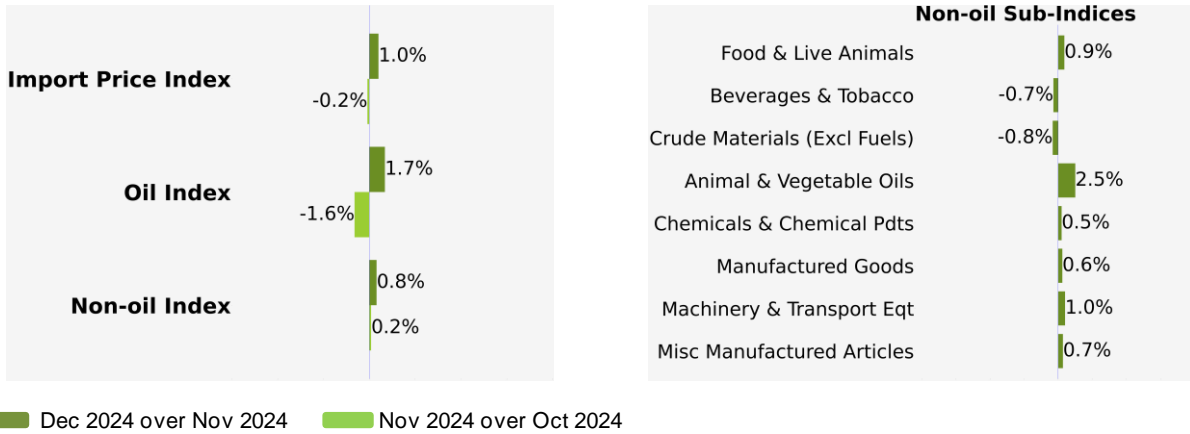
IMPORT AND EXPORT PRICE INDICES, December 2024
ISSN 2591-7463

© Department of Statistics, Ministry of Trade & Industry, Republic of Singapore

Reproducing or quoting any part of this publication is permitted, provided this publication is accredited as the source. Please refer to the SingStat Website Terms of Use (<http://www.singstat.gov.sg/terms-of-use>) for more details on the conditions of use of this publication.

Import Price Index (2023 = 100) December 2024

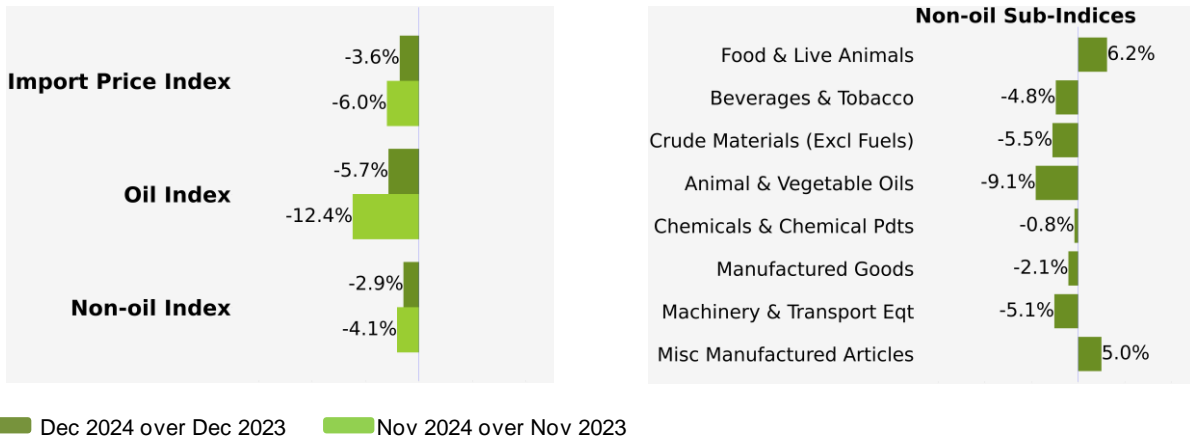
Month-on-Month Change



The Import Price Index rose 1.0% in December 2024, in contrast to the 0.2% decrease in November 2024. The Oil index gained 1.7%, reversing the 1.6% decrease in the previous month. The Non-oil index rose 0.8% in December 2024, continuing the 0.2% increase in November 2024.

The increase in the Non-oil index was due to the Machinery & Transport Equipment index, attributed to higher prices of power-generating machinery and equipment, as well as increases in the Miscellaneous Manufactured Articles, Chemicals & Chemical Products, Food & Live Animals and Animal & Vegetable Oils indices. The increases were partially offset by decreases in the Beverages & Tobacco and Crude Materials indices.

Year-on-Year Change



The Import Price Index fell 3.6% in December 2024 from a year ago, following the 6.0% decrease in November 2024. The Oil and Non-oil indices dropped 5.7% and 2.9% respectively.

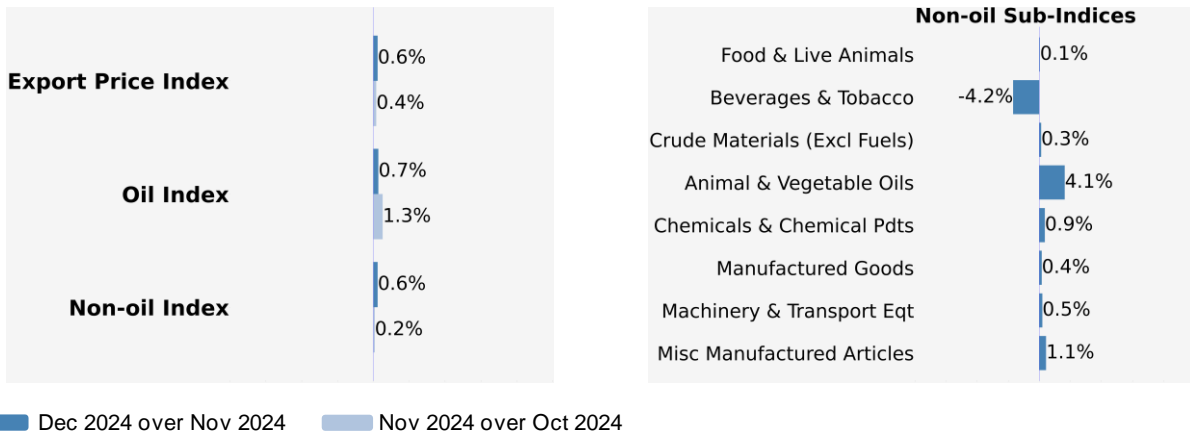
Among the Non-oil sub-indices, the decreases were due to the Machinery & Transport Equipment index, resulting from lower prices of electrical machinery apparatus, as well as decreases in the Manufactured Goods, Chemicals & Chemical Products, Animal & Vegetable Oils, Beverages & Tobacco and Crude Materials indices. The decreases were partially moderated by increases in the Miscellaneous Manufactured Articles and Food & Live Animals indices.

Annual Change

The Import Price Index fell 3.9% in 2024 over 2023, following the 5.6% decline in 2023. Among the Non-oil sub-indices, the decreases were due to the Machinery & Transport Equipment index, reflecting lower prices of electrical machinery apparatus, as well as decreases in the Chemicals & Chemical Products, Manufactured Goods, Animal & Vegetable Oils, Beverages & Tobacco and Crude Materials indices. The decreases were partially offset by increases in the Miscellaneous Manufactured Articles and Food & Live Animals indices.

Export Price Index (2023 = 100) December 2024

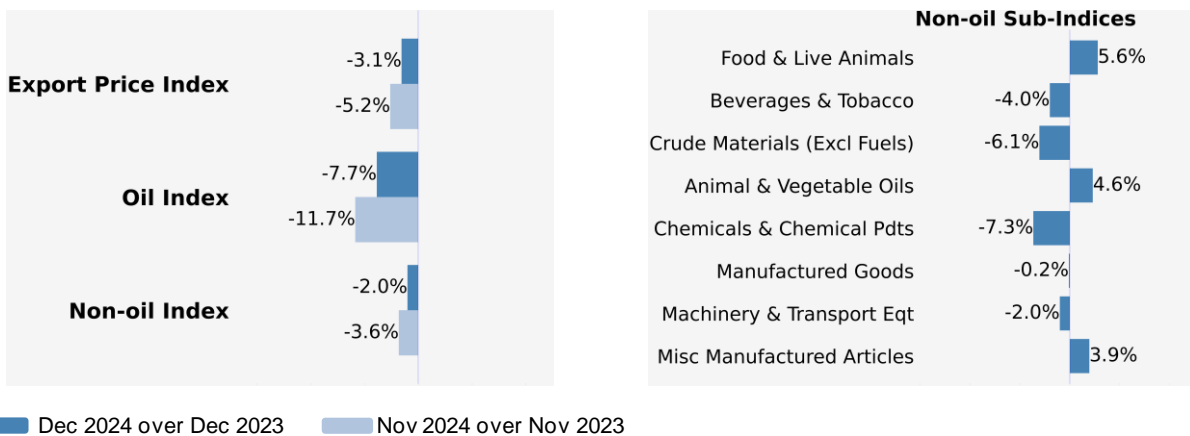
Month-on-Month Change



The Export Price Index rose 0.6% in December 2024, following the 0.4% increase in November 2024. The Oil index gained 0.7%, continuing the 1.3% increase in the previous month. The Non-oil index rose 0.6% in December 2024, after the 0.2% increase in November 2024.

The increase in the Non-oil index was due to the Machinery & Transport Equipment index, stemmed from higher prices of electrical machinery apparatus, as well as increases in the Chemicals & Chemical Products, Miscellaneous Manufactured Articles, Manufactured Goods, Animal & Vegetable Oils, Crude Materials and Food & Live Animals indices. The increases were partially offset by the decrease in the Beverages & Tobacco index.

Year-on-Year Change



The Export Price Index fell 3.1% in December 2024 from a year ago, following the 5.2% decrease in November 2024. The Oil and Non-oil indices fell 7.7% and 2.0% respectively.

Among the Non-oil sub-indices, the decreases were due to the Machinery & Transport Equipment index, on account of lower prices of electrical machinery apparatus, as well as decreases in the Chemicals & Chemical Products, Crude Materials, Beverages & Tobacco and Manufactured Goods indices. The decreases were partially moderated by increases in the Miscellaneous Manufactured Articles, Food & Live Animals and Animal & Vegetable Oils indices.

Annual Change

The Export Price Index fell 3.7% in 2024 over 2023, following the 7.6% decline in 2023. Among the Non-oil sub-indices, the decreases were due to the Machinery & Transport Equipment index, attributed to lower prices of electrical machinery apparatus, as well as decreases in the Chemicals & Chemical Products, Manufactured Goods, Crude Materials and Beverages & Tobacco indices. The decreases were partially offset by increases in the Miscellaneous Manufactured Articles, Food & Live Animals and Animal & Vegetable Oils indices.

Technical Note

The **Import Price Index (IPI)** is used primarily as an indicator to track the price trends of imported goods into Singapore. Prices of imports, valued at CIF terms (cost, insurance and freight) are obtained monthly from major importers. The weighting pattern of the index is derived from import statistics for 2023.

The **Export Price Index (EPI)** measures changes in the price of all exports of merchandise from Singapore, including re-exports. In general, prices are obtained from major exporters of the selected commodities. Prices used in the index computation, are the prices of goods that physically leave Singapore's main ports of export; also termed as Free on Board (FOB) prices. The weights of the index are derived from the distribution of export by commodity in 2023.

Index Formula

The 2023-based series is compiled using the Laspeyres formula where the price and weight reference periods are aligned to the year 2023. The geometric mean formula has been adopted in the computation of unweighted elementary aggregate price indices. The arithmetic mean formula is applied in compiling indices at higher levels of aggregation where weights of specific sub-indices are available.

Measurement of Changes in Price Indices

Change over previous month compares the index of the month with that of the preceding month. Such comparisons measure the change in the price index between two consecutive months. They serve as useful short-term indicators of the price movements.

Change over same period of previous year measures change in the index over a twelve-month period. Such comparisons compare the movement in the price index between similar months in two consecutive years.

Linking the Old 2018-Based Price Index Series to the New 2023-Based Price Index Series

The IPI and EPI have been rebased from base year 2018 to base year 2023. To facilitate comparison of the historical price indices across base years, the old 2018-based series are linked to the new 2023-based series by re-scaling them via a Linked Coefficient. The Linked Coefficient is the ratio of the annual 2023-based index in 2023 to the annual 2018-based index in 2023.

Example: Linking the old Iron & Steel Index series for IPI prior to 2023, to the 2023-based Iron & Steel Index (2023=100)

1) Calculate the linked coefficient

Year	Iron & Steel Index (2018=100)	Iron & Steel Index (2023=100)	Linked Coefficient
2023	117.2	100.0	$100.0 \div 117.2 = 0.853$

2) Re-scaling the old series to the 2023-based series using the Linked Coefficient

Year	Month	Iron & Steel Index (2018=100)	Iron & Steel Index (2023=100)
2021	Dec	130.3	$130.3 \times 0.853 = 111.1$
2022	Jan	128.7	$128.7 \times 0.853 = 109.8$

Rescaling the 2023-Based Index Series to Previous Years

To continue the old index series going forward in time, re-scale the new 2023-based index series to the old base year level, via a Rescaling Coefficient. The Rescaling Coefficient is the ratio of the annual 2023-based index in 2023 to the annual 2023-based index in the old base year.

Example: Rescaling the new 2023-based Iron & Steel Index series for IPI to the 2018-based Iron & Steel Index (2018=100)

1) Calculate the rescaling coefficient

Base Year	Annual Iron & Steel Index in 2023	Annual Iron & Steel Index in 2018	Linked Coefficient
2023	100.0	85.3	$100.0 \div 85.3 = 1.172$

2) Re-scaling the new series to the 2018-based series using the Rescaling Coefficient

Year	Month	Iron & Steel Index (2023=100)	Iron & Steel Index (2018=100)
2024	Jan	95.6	$95.6 \times 1.172 = 112.0$
2024	Feb	95.3	$95.3 \times 1.172 = 111.7$

Index Revision

The indices may be revised when late returns and amendments received from respondents are incorporated.

Dissemination of Data

The Import and Export Price Indices are available on the SingStat Website (www.singstat.gov.sg/tablebuilder). Excel tables for this month's report are available at <https://www.singstat.gov.sg/publications/economy/import-export-price-indices> or through the QR code below:



Import Price Index (2023 = 100) December 2024

Chart 1: Index

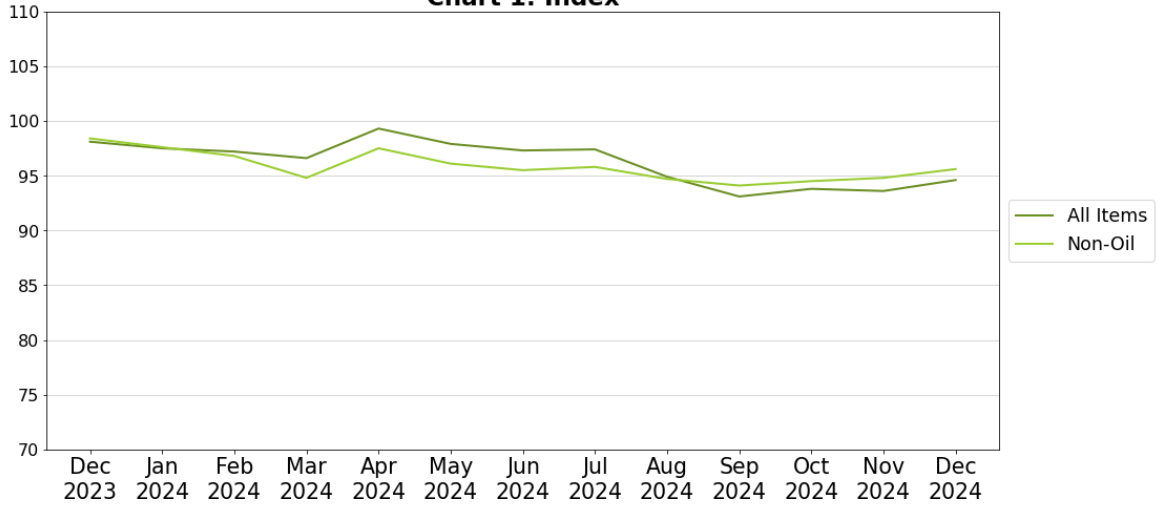


Chart 2: Month-on-Month Change

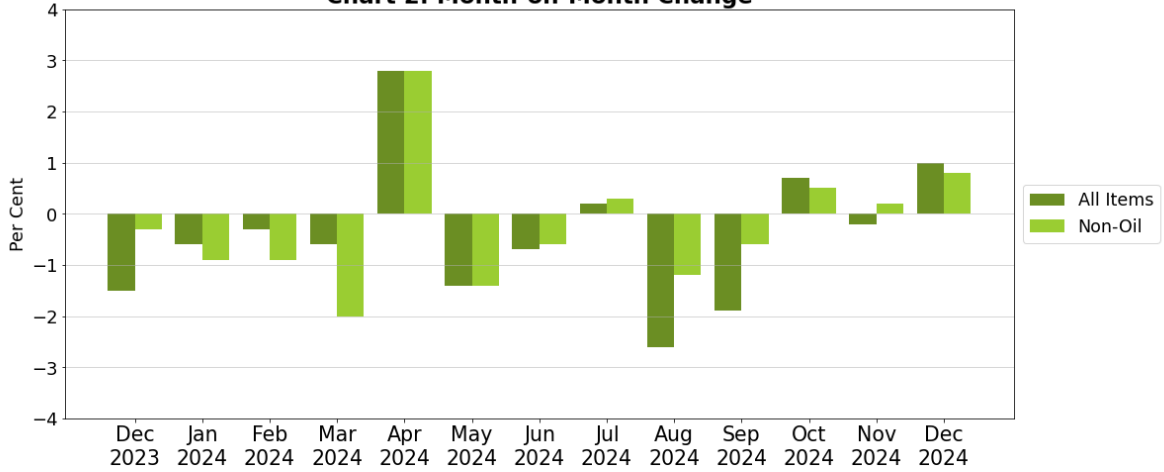
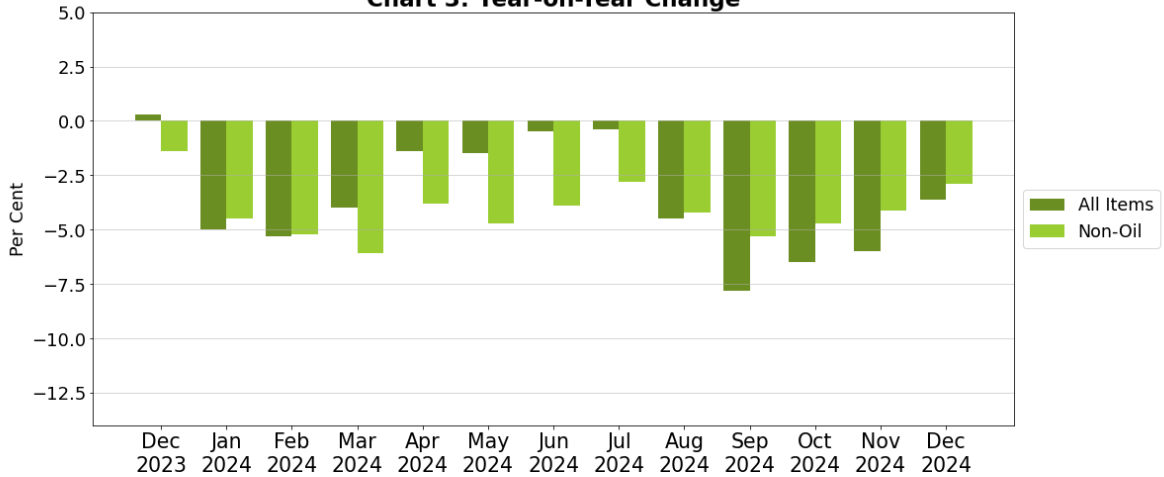


Chart 3: Year-on-Year Change



Export Price Index (2023 = 100) December 2024

Chart 4: Index

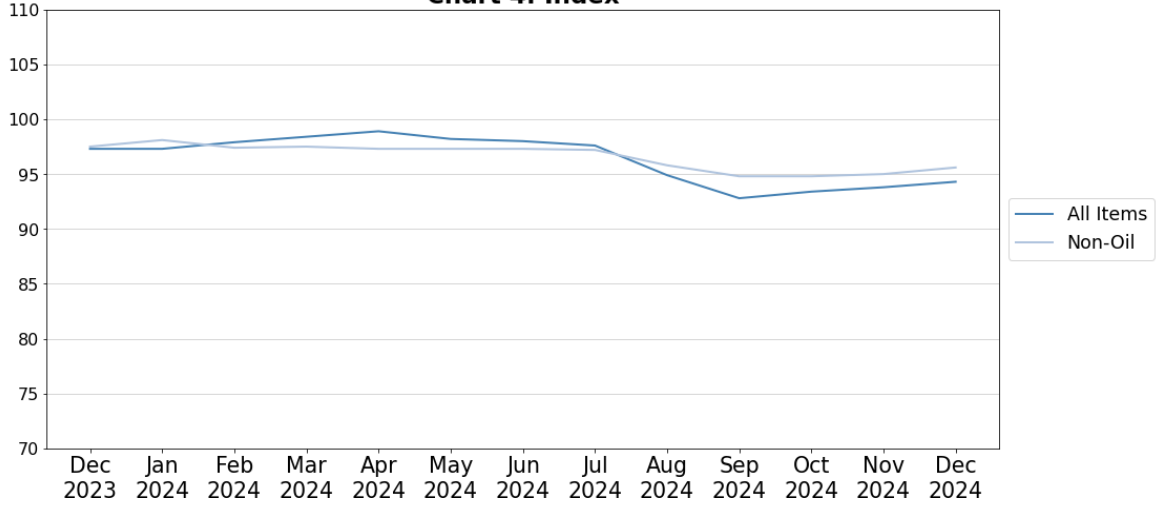


Chart 5: Month-on-Month Change

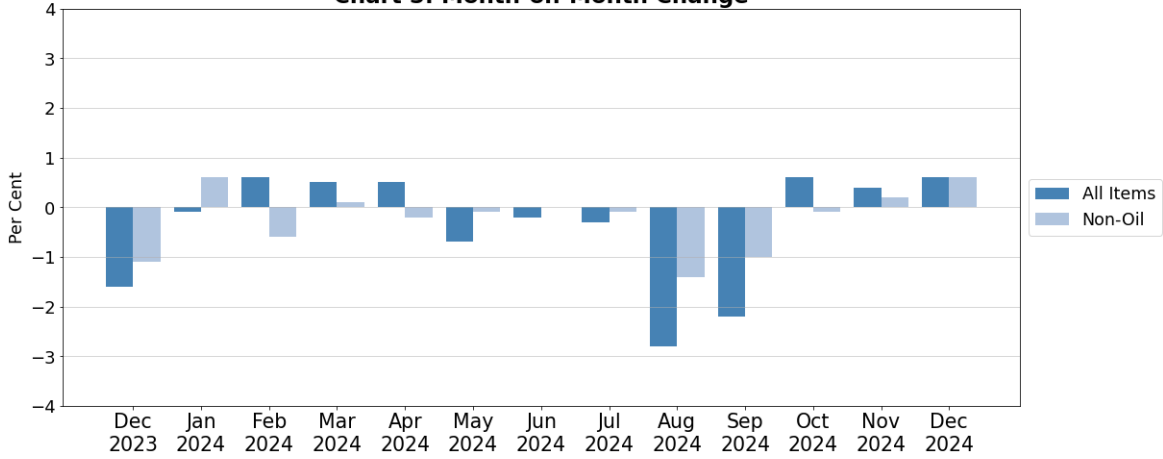


Chart 6: Year-on-Year Change

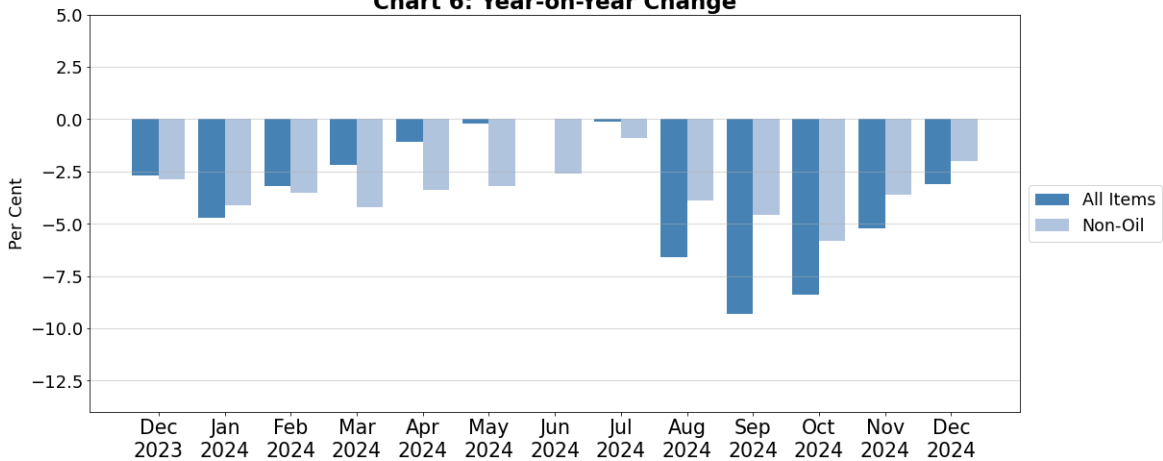


Table 1 Import Price Index

December 2024

Commodity section / division	Weights	Index (2023=100)			% Change		
		Oct 2024	Nov 2024	Dec 2024	Nov 2024	Dec 2024	Dec 2024
					Oct 2024	Nov 2024	Dec 2023
All Items	10,000	93.8	93.6	94.6	-0.2	1.0	-3.6
Non-oil Items	7,703	94.5	94.8	95.6	0.2	0.8	-2.9
Food & Live Animals	254	104.1	104.9	105.9	0.8	0.9	6.2
Live animals	7	88.6	85.5	87.3	-3.5	2.2	1.0
Meat & meat preparations	35	103.2	103.5	103.9	0.2	0.4	3.2
Dairy products & birds' eggs	30	96.5	96.9	98.0	0.5	1.1	3.3
Fish seafood & preparations	31	97.1	97.6	98.6	0.6	1.0	-0.1
Cereals & cereal preparations	26	100.9	102.0	102.4	1.0	0.5	3.0
Vegetables & fruit	46	96.2	96.7	97.9	0.5	1.3	-1.7
Sugar, sugar preparations & honey	10	98.5	98.4	99.0	-	0.6	-5.2
Coffee, tea, cocoa, spices & manufactures	28	147.9	150.5	150.9	1.8	0.2	41.3
Animal feeding stuff (excl unmilled cereals)	6	102.4	107.3	109.5	4.8	2.0	8.6
Miscellaneous food preparations	35	100.8	101.9	103.8	1.1	1.9	3.7
Beverages & Tobacco	110	96.6	96.3	95.6	-0.3	-0.7	-4.8
Beverages	94	96.5	96.4	95.5	-0.1	-0.9	-4.7
Tobacco & manufactures	16	96.9	95.9	96.3	-1.0	0.4	-5.4
Crude Materials (excl fuels)	58	95.4	94.0	93.2	-1.5	-0.8	-5.5
Hides Skins & Furskins	1	100.0	100.0	100.0	-	-	-
Oil seeds & oleaginous fruits	1	94.6	96.4	97.0	1.9	0.6	-1.5
Crude rubber	6	96.3	97.3	99.2	1.0	2.0	0.2
Cork & wood	2	92.5	93.2	96.4	0.7	3.4	2.6
Textile Fibres	3	102.0	102.0	102.7	-	0.7	3.5
Crude fertilizers & minerals	20	111.4	112.0	110.5	0.5	-1.3	13.0
Metalliferous ores & metal scrap	16	73.0	65.2	62.8	-10.7	-3.7	-36.9
Crude animal & vegetable materials nes	9	97.7	100.1	100.2	2.5	0.1	1.0
Mineral Fuels, Lubricants & Related Materials	2,297	91.3	89.8	91.3	-1.6	1.7	-5.7
Petroleum & products & related materials	2,143	91.3	89.4	90.9	-2.1	1.7	-6.3
Gas	155	90.7	95.3	97.0	5.1	1.9	1.5
Animal & Vegetable Oils, Fats & Waxes	70	92.5	87.2	89.4	-5.7	2.5	-9.1
Fixed vegetable fats & oils	15	94.5	95.5	102.6	1.1	7.4	9.7
Inedible Mixtures Of Animal Or Vegetable Fats Or Oils	54	91.9	84.9	85.8	-7.6	1.0	-14.0
Chemicals & Chemical Products	874	95.8	96.6	97.0	0.7	0.5	-0.8
Organic chemicals	297	92.6	94.0	94.4	1.6	0.4	-3.1
Inorganic chemicals	36	95.7	97.3	96.6	1.7	-0.8	1.0
Dyeing, tanning & colouring materials	23	92.8	93.6	94.5	0.9	0.9	-2.4
Medicinal & pharmaceutical products	133	101.8	102.5	102.8	0.7	0.3	4.0
Essential oils & perfume; toilet cleaning products	143	98.4	98.6	98.5	0.2	-0.1	1.1
Plastics in primary forms	99	90.3	92.7	92.6	2.7	-0.2	-2.8
Plastics in non-primary forms	31	95.0	94.8	96.1	-0.2	1.3	-3.5
Chemical materials & products nes	111	100.0	97.8	100.1	-2.2	2.3	-0.8
Manufactured Goods	512	94.4	95.2	95.8	0.8	0.6	-2.1
Leather Manufactures & Dressed Furskins	1	98.2	98.2	98.6	-	0.4	-1.6
Rubber manufactures nes	22	97.9	99.0	99.0	1.1	-	2.6
Cork & Wood Manufactures	10	90.8	92.3	92.5	1.7	0.3	-0.8
Paper manufactures	36	94.1	95.9	95.9	1.8	-	-1.1
Textile manufactures	21	96.3	97.2	98.0	0.9	0.9	0.3
Non-metal mineral manufactures nes	70	98.0	98.0	99.4	-	1.5	1.8
Iron & steel	113	88.6	89.9	90.8	1.5	1.0	-7.4
Non-ferrous metals	105	95.1	95.3	94.8	0.3	-0.6	-1.5
Manufactures of metals nes	133	96.4	97.2	98.2	0.8	1.0	-1.6
Machinery & Transport Equipment	4,954	92.4	92.5	93.4	0.1	1.0	-5.1
Power-generating machinery & equipment	644	101.7	103.7	108.4	2.0	4.5	5.9
Machinery specialized for particular industries	324	95.7	97.9	98.8	2.3	0.9	-1.7
Metal working machinery	15	90.8	91.9	91.4	1.2	-0.5	-9.1
General industrial machinery	308	97.2	97.9	99.2	0.7	1.3	1.9
Office machines & data-processing machines	368	96.2	96.1	97.2	-0.1	1.1	-0.6
Telecommunication apparatus	412	102.2	99.8	99.3	-2.4	-0.4	-7.0
Electrical machinery apparatus nes, electrical parts	2,765	86.9	86.7	86.9	-0.3	0.2	-9.6
Road vehicles	117	101.2	100.7	101.3	-0.5	0.6	1.2
Miscellaneous Manufactured Articles	872	102.5	103.1	103.8	0.5	0.7	5.0
Prefab building, sanitary plumbing, lighting nes	12	92.9	95.3	96.2	2.7	0.9	-2.7
Furniture, bedding, mattresses, cushions & others	26	99.7	99.6	100.1	-0.1	0.5	2.2
Travel goods, handbags & similar containers	66	106.7	106.7	106.6	-	-	7.1
Articles of apparel & clothing accessories	63	88.6	88.6	89.2	-	0.7	2.2
Footwear	25	97.0	95.8	100.2	-1.2	4.6	0.4
Professional scientific & controlling instruments	256	94.2	94.9	95.1	0.8	0.2	-2.2
Photographic & optical goods nes; watches & clocks	104	103.9	104.3	104.7	0.4	0.3	2.8
Miscellaneous manufactured articles nes	319	111.7	112.5	113.6	0.7	1.0	12.3

Figures may not sum to total due to rounding.

Table 2 Export Price Index

December 2024

Commodity section / division	Weights	Index (2023=100)			% Change		
		Oct 2024	Nov 2024	Dec 2024	Nov 2024	Dec 2024	Dec 2024
					Oct 2024	Nov 2024	Dec 2023
All Items	10,000	93.4	93.8	94.3	0.4	0.6	-3.1
Non-oil Items	8,026	94.8	95.0	95.6	0.2	0.6	-2.0
Food & Live Animals	214	103.1	104.6	104.7	1.4	0.1	5.6
Dairy products & birds' eggs	5	97.3	102.9	104.2	5.7	1.3	4.1
Fish seafood & preparations	6	101.4	100.9	100.0	-0.6	-0.9	0.8
Cereals & cereal preparations	8	93.6	94.6	94.9	1.1	0.3	-2.7
Vegetables & fruit	5	109.2	111.7	113.5	2.3	1.6	14.2
Sugar, sugar preparations & honey	3	99.4	101.5	101.8	2.1	0.4	-4.9
Coffee, tea, cocoa, spices & manufactures	25	141.8	147.5	147.1	4.1	-0.3	38.2
Animal feeding stuff (excl unmilled cereals)	7	92.9	93.8	101.0	1.0	7.6	4.0
Miscellaneous food preparations	154	97.9	98.6	98.4	0.7	-0.3	0.5
Beverages & Tobacco	90	100.3	98.2	94.1	-2.0	-4.2	-4.0
Beverages	77	101.2	98.6	93.6	-2.6	-5.0	-4.2
Tobacco & manufactures	14	95.1	96.4	97.1	1.4	0.7	-2.9
Crude Materials (excl fuels)	62	95.5	93.3	93.7	-2.3	0.3	-6.1
Crude rubber	21	102.0	103.6	105.0	1.6	1.3	6.9
Pulp and waste paper	9	95.2	94.4	94.5	-0.8	0.1	0.4
Metalliferous ores & metal scrap	30	90.4	84.5	84.1	-6.6	-0.5	-17.8
Crude animal & vegetable materials nes	3	102.1	106.7	107.8	4.5	1.0	6.8
Mineral Fuels, Lubricants & Related Materials	1,974	87.5	88.7	89.4	1.3	0.7	-7.7
Petroleum & products & related materials	1,974	87.5	88.7	89.4	1.3	0.7	-7.7
Animal & Vegetable Oils, Fats & Waxes	5	97.3	102.0	106.1	4.8	4.1	4.6
Fixed vegetable fats & oils	4	97.2	103.5	99.8	6.5	-3.5	-3.3
Inedible Mixtures Of Animal Or Vegetable Fats Or Oils	2	97.6	99.0	118.4	1.5	19.6	20.8
Chemicals & Chemical Products	1,297	89.6	89.2	90.0	-0.4	0.9	-7.3
Organic chemicals	339	83.5	83.3	82.1	-0.2	-1.5	-16.5
Inorganic chemicals	14	89.3	90.8	90.9	1.7	0.1	-4.1
Dyeing, tanning & colouring materials	25	96.1	97.2	98.5	1.2	1.3	1.1
Medicinal & pharmaceutical products	296	87.9	83.7	85.7	-4.7	2.4	-9.1
Essential oils & perfume; toilet cleaning products	233	93.8	94.7	96.8	1.1	2.1	-3.3
Plastics in primary forms	232	95.7	96.7	97.8	0.9	1.2	2.0
Plastics in non-primary forms	24	98.8	100.1	100.9	1.4	0.8	1.4
Chemical materials & products nes	133	87.7	89.7	90.6	2.3	1.0	-6.1
Manufactured Goods	277	96.2	97.1	97.5	1.0	0.4	-0.2
Leather Manufactures & Dressed Furskins	3	99.4	104.3	103.6	5.0	-0.8	4.0
Rubber manufactures nes	20	100.0	100.9	101.2	0.9	0.3	-0.7
Paper manufactures	35	97.9	99.0	98.6	1.1	-0.4	-0.8
Textile manufactures	14	96.7	97.5	97.4	0.8	-0.2	-2.5
Non-metal mineral manufactures nes	18	99.5	99.6	104.3	0.1	4.7	2.3
Iron & steel	56	79.5	80.0	81.8	0.7	2.2	-11.3
Non-ferrous metals	59	107.9	109.9	107.4	1.8	-2.2	13.1
Manufactures of metals nes	73	96.6	97.0	98.1	0.4	1.1	-2.6
Machinery & Transport Equipment	5,185	94.5	94.7	95.1	0.2	0.5	-2.0
Power-generating machinery & equipment	461	103.7	107.6	105.7	3.8	-1.7	4.8
Machinery specialized for particular industries	650	108.7	106.3	107.5	-2.2	1.2	8.8
Metal working machinery	17	100.8	102.2	102.3	1.3	0.2	2.3
General industrial machinery	207	97.2	97.5	96.4	0.3	-1.2	-2.2
Office machines & data-processing machines	343	92.2	94.0	94.4	1.9	0.4	-6.6
Telecommunication apparatus	426	93.6	92.7	93.1	-1.0	0.5	-3.9
Electrical machinery apparatus nes, electrical parts	3,007	90.0	90.1	90.9	0.2	0.9	-4.9
Road vehicles	73	101.3	101.4	101.8	0.1	0.3	1.4
Miscellaneous Manufactured Articles	895	101.2	102.2	103.4	1.0	1.1	3.9
Prefab building, sanitary plumbing, lighting nes	3	81.6	83.4	83.1	2.2	-0.4	-16.8
Furniture, bedding, mattresses, cushions & others	6	104.1	104.1	104.1	-	-	3.3
Travel goods, handbags & similar containers	41	102.0	101.8	101.8	-0.2	-	4.9
Articles of apparel & clothing accessories	32	97.1	98.0	102.4	1.0	4.4	13.4
Footwear	18	91.3	91.8	103.6	0.5	12.8	-6.2
Professional scientific & controlling instruments	400	97.7	99.1	99.6	1.5	0.4	-0.9
Photographic & optical goods nes; watches & clocks	85	103.1	103.1	102.8	-	-0.3	2.9
Miscellaneous manufactured articles nes	310	106.3	107.3	109.0	0.9	1.6	10.5

Figures may not sum to total due to rounding.

Table 3 Import Price Index

Section	All Items	Non-oil Items	Food & Live Animals	Beverages & Tobacco	Crude Materials	Mineral Fuels	Animal & Vegetable Oils, Fats & Waxes	Chemicals & Chemical Products	Manufactured Goods	Machinery & Transport Equipment	Misc. Manufactured Articles
Weights	10,000	7,703	254	110	58	2,297	70	874	512	4,954	872
Index (2023=100)											
2021	92.6	95.3	91.8	87.2	92.3	85.7	108.2	97.0	97.2	94.9	96.9
2022	105.9	100.6	99.7	89.5	97.9	119.5	126.4	103.1	104.6	100.1	99.3
2023	100.0	100.0	100.0	100.0	100.0	100.0	100.0	100.0	100.0	100.0	100.0
2024	96.1	95.6	103.0	97.3	95.7	97.6	92.1	97.5	96.1	93.9	101.5
2023											
Dec	98.1	98.5	99.8	100.5	98.6	96.9	98.4	97.8	97.8	98.4	98.8
2024											
Jan	97.5	97.6	101.4	97.5	96.8	97.1	98.8	98.0	97.0	97.2	98.9
Feb	97.2	96.8	101.3	97.7	97.6	98.4	97.3	98.0	96.6	95.9	99.3
Mar	96.6	94.8	100.9	97.7	97.9	102.5	85.8	97.5	96.2	93.0	100.0
Apr	99.3	97.5	102.0	97.8	95.4	105.4	95.1	98.6	97.1	96.4	101.7
May	97.9	96.1	102.5	98.1	98.7	104.0	98.5	98.6	97.2	94.1	101.8
Jun	97.3	95.5	102.6	98.2	95.5	103.1	98.6	99.0	97.3	93.2	101.4
Jul	97.4	95.8	103.4	98.2	93.6	102.9	86.2	98.3	96.8	93.9	102.0
Aug	94.9	94.7	103.6	97.0	97.5	95.8	85.9	96.7	95.2	92.6	101.6
Sep	93.1	94.1	103.3	96.6	93.3	90.0	89.6	95.6	94.3	92.0	101.6
Oct	93.8	94.5	104.1	96.6	95.4	91.3	92.5	95.8	94.4	92.4	102.5
Nov	93.6	94.8	104.9	96.3	94.0	89.8	87.2	96.6	95.2	92.5	103.1
Dec	94.6	95.6	105.9	95.6	93.2	91.3	89.4	97.0	95.8	93.4	103.8
Percentage Change over same period of previous year (%)											
2022	14.4	5.5	8.7	2.7	6.0	39.5	16.9	6.4	7.5	5.5	2.5
2023	-5.6	-0.6	0.3	11.7	2.1	-16.3	-20.9	-3.0	-4.4	-0.1	0.7
2024	-3.9	-4.4	3.0	-2.7	-4.3	-2.4	-7.9	-2.5	-3.9	-6.1	1.5
2023											
Dec	0.3	-1.4	-1.2	12.9	-0.1	4.5	-11.5	-2.7	-3.9	-1.6	1.4
2024											
Jan	-5.0	-4.5	2.1	0.1	-10.0	-6.8	-2.1	-3.2	-5.0	-5.6	-0.9
Feb	-5.3	-5.2	2.1	0.3	-9.0	-5.5	-3.7	-3.3	-5.6	-6.8	-0.5
Mar	-4.0	-6.1	0.6	-0.9	-7.5	3.2	-15.2	-3.9	-5.1	-7.9	-0.5
Apr	-1.4	-3.8	1.8	-1.8	-3.2	6.7	-3.1	-2.5	-4.5	-5.0	0.4
May	-1.5	-4.7	2.8	-2.4	-0.7	10.0	0.9	-1.8	-4.3	-6.7	0.4
Jun	-0.5	-3.9	2.4	-2.7	-0.4	11.7	-2.4	-0.9	-3.0	-5.8	0.4
Jul	-0.4	-2.8	3.3	-3.1	-4.3	8.1	-13.8	-	-2.7	-4.4	1.9
Aug	-4.5	-4.2	2.6	-4.3	-0.2	-5.5	-15.6	-2.3	-3.6	-6.0	2.2
Sep	-7.8	-5.3	2.6	-4.3	-2.1	-15.5	-10.8	-4.7	-4.1	-7.2	1.9
Oct	-6.5	-4.7	3.9	-4.0	-0.6	-12.5	-7.3	-4.6	-4.0	-6.6	3.2
Nov	-6.0	-4.1	5.9	-4.3	-6.1	-12.4	-12.5	-2.3	-2.7	-6.3	4.2
Dec	-3.6	-2.9	6.2	-4.8	-5.5	-5.7	-9.1	-0.8	-2.1	-5.1	5.0

Table 4 Export Price Index

Section	All Items	Non-oil Items	Food & Live Animals	Beverages & Tobacco	Crude Materials	Mineral Fuels	Animal & Vegetable Oils, Fats & Waxes	Chemicals & Chemical Products	Manufactured Goods	Machinery & Transport Equipment	Misc. Manufactured Articles
Weights	10,000	8,026	214	90	62	1,974	5	1,297	277	5,185	895
Index (2023=100)											
2021	93.3	97.3	100.7	91.2	103.7	79.4	93.5	99.7	94.7	96.0	101.4
2022	108.2	105.0	102.9	95.0	113.6	119.3	114.8	108.6	103.5	104.4	103.5
2023	100.0	100.0	100.0	100.0	100.0	100.0	100.0	100.0	100.0	100.0	100.0
2024	96.3	96.5	101.8	99.3	98.2	95.4	101.2	92.7	96.6	96.4	100.7
2023											
Dec	97.3	97.5	99.1	98.0	99.8	96.8	101.4	97.1	97.7	97.1	99.5
2024											
Jan	97.3	98.1	99.9	102.4	98.6	94.2	100.5	96.0	95.7	98.2	100.2
Feb	97.9	97.4	99.9	101.1	99.2	99.9	101.9	94.1	96.0	97.7	100.1
Mar	98.4	97.5	100.4	98.1	99.3	101.9	101.2	94.4	95.5	98.0	99.4
Apr	98.9	97.3	100.5	101.3	98.4	105.1	101.9	94.3	96.4	97.4	100.4
May	98.2	97.3	101.3	101.2	103.0	101.8	100.9	94.7	96.8	97.1	100.1
Jun	98.0	97.3	101.6	98.6	101.9	100.7	100.5	93.8	97.5	97.4	100.4
Jul	97.6	97.2	102.7	100.7	98.8	99.4	101.6	93.9	98.6	97.0	100.8
Aug	94.9	95.8	101.8	98.0	100.5	91.3	100.5	91.7	96.6	95.7	99.7
Sep	92.8	94.8	101.3	97.6	96.4	84.4	100.0	90.6	95.5	94.5	100.7
Oct	93.4	94.8	103.1	100.3	95.5	87.5	97.3	89.6	96.2	94.5	101.2
Nov	93.8	95.0	104.6	98.2	93.3	88.7	102.0	89.2	97.1	94.7	102.2
Dec	94.3	95.6	104.7	94.1	93.7	89.4	106.1	90.0	97.5	95.1	103.4
Percentage Change over same period of previous year (%)											
2022	15.9	7.8	2.1	4.2	9.6	50.3	22.8	8.9	9.3	8.7	2.1
2023	-7.6	-4.7	-2.8	5.3	-12.0	-16.2	-12.9	-7.9	-3.4	-4.2	-3.4
2024	-3.7	-3.5	1.8	-0.7	-1.8	-4.6	1.2	-7.3	-3.4	-3.6	0.7
2023											
Dec	-2.7	-2.9	-2.1	6.1	-5.5	-2.1	-8.8	-5.6	-3.1	-2.7	-0.2
2024											
Jan	-4.7	-4.1	1.9	2.0	-8.4	-7.3	-0.5	-3.8	-4.8	-5.0	-0.7
Feb	-3.2	-3.5	1.9	0.7	-3.3	-1.7	0.8	-6.3	-4.3	-3.6	-0.7
Mar	-2.2	-4.2	0.8	-5.1	-2.8	6.5	-1.8	-7.6	-4.4	-3.9	-2.2
Apr	-1.1	-3.4	-	-1.6	-1.6	8.5	0.5	-7.2	-4.6	-2.9	-1.4
May	-0.2	-3.2	0.9	1.5	0.1	13.5	4.2	-6.5	-4.0	-3.0	-0.8
Jun	-	-2.6	1.1	-0.9	2.7	11.8	4.7	-6.5	-4.0	-2.2	-0.3
Jul	-0.1	-0.9	2.9	0.7	3.4	3.3	8.9	-4.6	-2.2	-0.7	2.2
Aug	-6.6	-3.9	0.9	-1.7	4.3	-16.4	3.7	-7.8	-4.2	-4.1	1.0
Sep	-9.3	-4.6	-	-1.2	-0.2	-26.1	-3.7	-9.8	-4.4	-4.6	1.7
Oct	-8.4	-5.8	2.5	1.0	-1.7	-18.4	-5.2	-10.7	-2.5	-6.5	1.4
Nov	-5.2	-3.6	3.5	0.3	-6.7	-11.7	-0.4	-9.6	-0.9	-3.9	4.5
Dec	-3.1	-2.0	5.6	-4.0	-6.1	-7.7	4.6	-7.3	-0.2	-2.0	3.9

NOTATIONS

nes not elsewhere specified
- nil or negligible

NOTES

The Import and Export Price Indices report contains statistics that are the most recent available at the time of its preparation.

Some statistics, particularly those for the most recent time periods, are provisional and may be subject to revision in later issues.

SINGAPORE DEPARTMENT OF STATISTICS COMMUNICATIONS & INFORMATION SERVICES

Singapore Department of Statistics (DOS) offers official statistics, data insights, visualisations and statistical resources through user-friendly platforms.



SingStat Website

Visit this convenient gateway to access latest data and statistical information.

Data across the six major themes of Economy, Industry, Trade & Investment, Population, Households and Society, covering some 200 topics such as Gross Domestic Product, Consumer Price Index, Retail Sales and Food & Beverage Services Indices, Producer Price Indices, Business Expectations, Business Receipts Index, Trade in Services, Direct Investment, Population Indicators, Household Income, Household Expenditure, Deaths and Life Expectancy, Births and Fertility, Marriages and Divorces, and more.

Publications

- Information Papers which highlight conceptual and methodological changes and improvements in official statistics.
- Occasional Papers which present statistical trends and observations on important social and economic issues to stimulate discussion and research.
- eBook of Statistics which consolidates latest information and resources on key economic and socio-demographic domains.
- Singapore in Figures which allows exploration of key economic and socio-demographic statistics through interactive dashboards.
- Statistics Singapore Newsletter which features articles on latest key statistical activities, recent survey findings and methodological improvements.

Visualisations such as infographics and interactive dashboards with latest data, and videos to explain data and statistical concepts.

Data for Businesses with data tools to empower data-driven business decisions, giving firms insights on their customers, industries and business performance.

Advance Release Calendar providing dates of upcoming data releases in the next six months.



SingStat Table Builder

Access for free over 2,200 data tables across various economic and socio-demographic domains from 70 public sector agencies. Watch the [video](#) to find out how you can easily access and customise data tables.



SingStat Mobile App

Download the app for fast and convenient access to commonly used statistics from your mobile devices. Over 260 charts are available across 38 data categories for easy access to visualise data trends.



SingStat Express

Subscribe to receive alerts on the latest press releases, occasional/information papers and newsletters.



For statistical enquiries, you may reach us at:

email: info@singstat.gov.sg or submit the [Data Request Form](#)

phone: 1800-323 8118* (Local users) or (65) 6332 7738 (Overseas users)

* Calls from mobile telephone lines to 1800 local toll-free number may be subject to mobile airtime charges as imposed by the relevant mobile service provider.

Find us on social media!



@SingStat



@singstat_dos



@SingStatvideo



@sg-department-of-statistics