



# Import & Export Price Indices January 2022

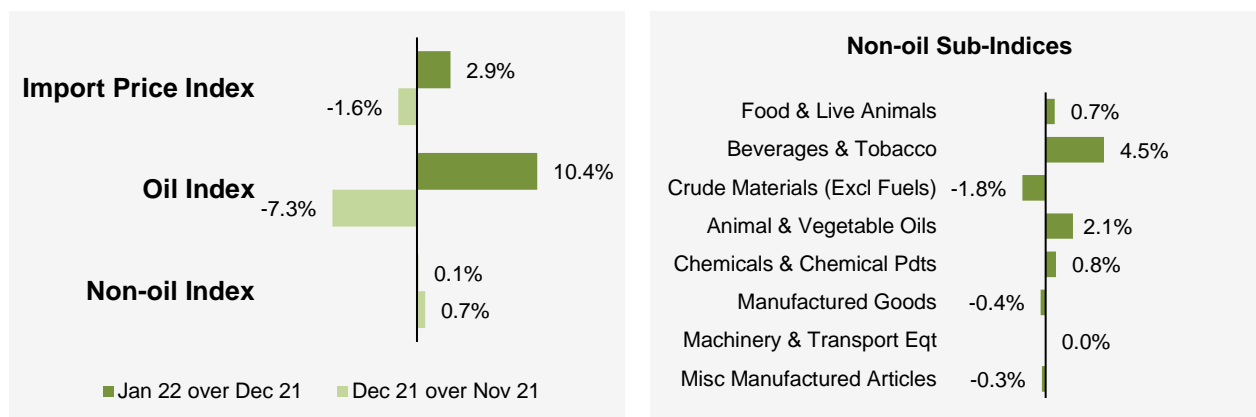
**IMPORT AND EXPORT PRICE INDICES, January 2022**  
**ISSN 2591-7463**

**© Department of Statistics, Ministry of Trade & Industry, Republic of Singapore**

Reproducing or quoting any part of this publication is permitted, provided this publication is accredited as the source. Please refer to the SingStat Website Terms of Use (<http://www.singstat.gov.sg/terms-of-use>) for more details on the conditions of use of this publication.

# Import Price Index (2018 = 100) January 2022

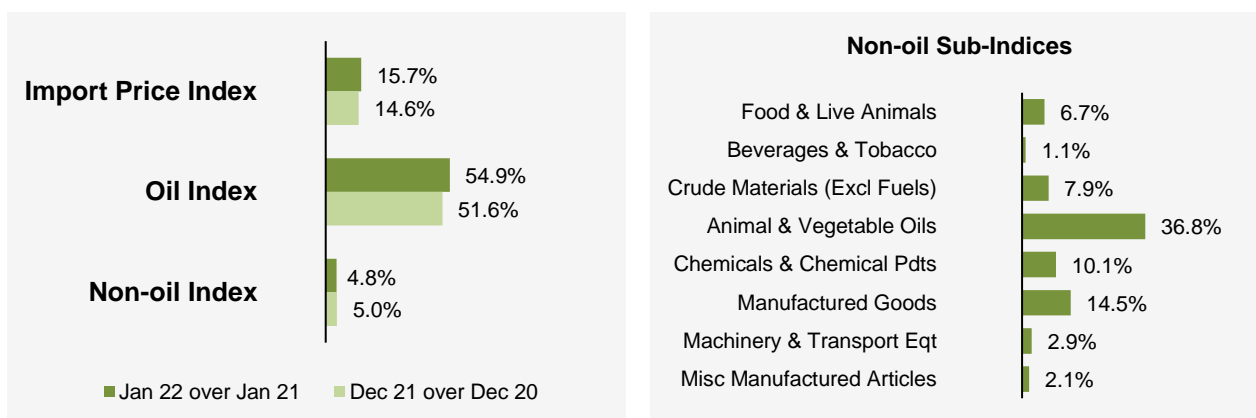
## Month-on-Month Change



The Import Price Index rose 2.9% in January 2022, reversing the 1.6% decrease in December 2021. The Oil index increased 10.4%, in contrast to the 7.3% drop in the previous month. The Non-oil index increased 0.1% in January 2022, after the 0.7% gain in December 2021.

Among the Non-oil sub-indices, the increases were led by the Beverages & Tobacco (4.5%) index, due mainly to higher prices of alcoholic beverages, and the Chemicals & Chemical Products (0.8%) index. The increases were partially moderated by declines in the Manufactured Goods (-0.4%) and the Miscellaneous Manufactured Articles (-0.3%) indices.

## Year-on-Year Change

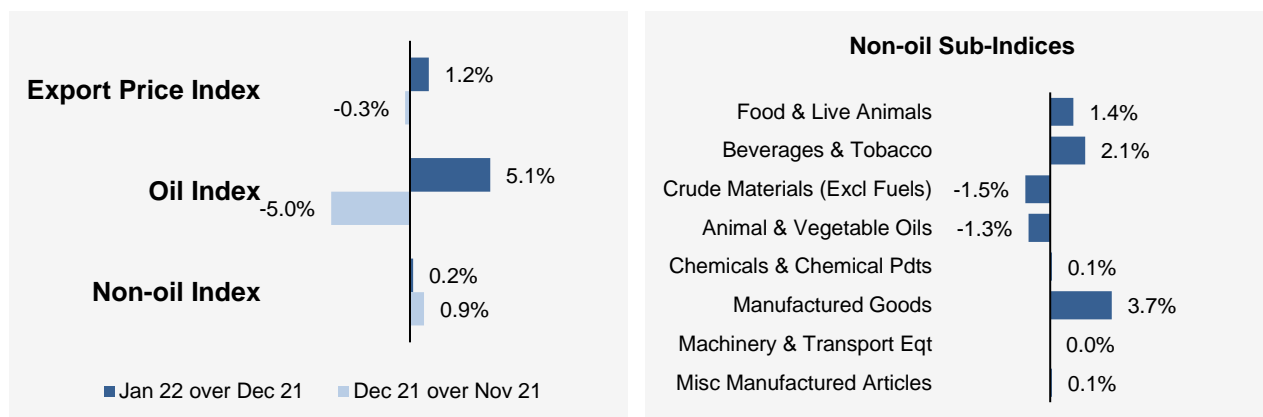


The Import Price Index rose 15.7% in January 2022 from a year ago, extending the 14.6% gain in December 2021. The Oil and Non-oil indices increased 54.9% and 4.8% respectively.

All Non-oil sub-indices increased. Higher prices were registered for Animal & Vegetable Oils (36.8%), Manufactured Goods (14.5%), Chemicals & Chemical Products (10.1%), Crude Materials (7.9%), Food & Live Animals (6.7%), Machinery & Transport Equipment (2.9%), Miscellaneous Manufactured Articles (2.1%) and Beverages & Tobacco (1.1%).

## Export Price Index (2018 = 100) January 2022

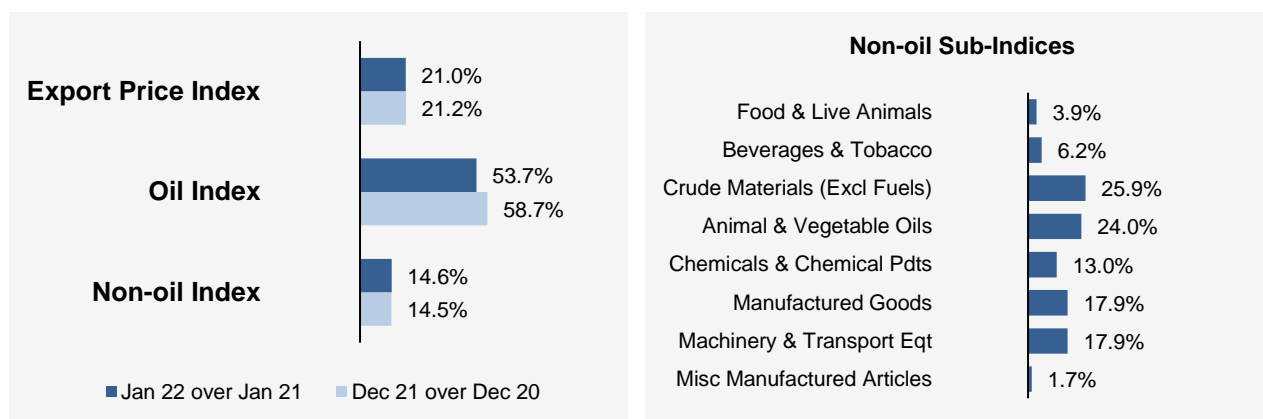
### Month-on-Month Change



The Export Price Index increased 1.2% in January 2022, in contrast to the 0.3% drop in December 2021. The Oil index rose 5.1%, reversing the 5.0% decrease in the previous month. The Non-oil index grew by 0.2% in January 2022, following the 0.9% gain in December 2021.

Among the Non-oil sub-indices, the increases were led by the Manufactured Goods (3.7%) and the Food & Live Animals (1.4%) indices, due mainly to higher prices of iron & steel and miscellaneous food preparations respectively. The increases were partially moderated by declines in the Crude Materials (-1.5%) and the Animal & Vegetable Oils (-1.3%) indices, due mainly to lower prices of crude rubbers and refined palm oil respectively.

### Year-on-Year Change



The Export Price Index increased 21.0% in January 2022 from a year ago, following the 21.2% rise in December 2021. The Oil and Non-oil indices went up 53.7% and 14.6% respectively.

All Non-oil sub-indices rose. Higher prices were registered for Crude Materials (25.9%), Animal & Vegetable Oils (24.0%), Machinery & Transport Equipment (17.9%), Manufactured Goods (17.9%), Chemicals & Chemical Products (13.0%), Beverages & Tobacco (6.2%), Food & Live Animals (3.9%) and Miscellaneous Manufactured Articles (1.7%).

## Technical Note

The **Import Price Index (IPI)** is used primarily as an indicator to track the price trends of imported goods into Singapore. Prices of imports, valued at cif (cost, insurance and freight) are obtained monthly from major importers. The weighting pattern of the index is derived from import statistics for 2018.

The **Export Price Index (EPI)** measures changes in the price of all exports of merchandise from Singapore, including re-exports. In general, prices are obtained from major exporters of the selected commodities. Prices used in the index computation, are the prices of goods that physically leave Singapore's main ports of export; also termed as free on board prices. The weights of the index are derived from the distribution of export by commodity in 2018.

### Index Formula

The 2018-based series is compiled using the Laspeyres formula where the price and weight reference periods are aligned to the year 2018. The geometric mean formula has been adopted in the computation of unweighted elementary aggregate price indices. The arithmetic mean formula is applied in compiling indices at higher levels of aggregation where weights of specific sub-indices are available.

### Measurement of Changes in Price Indices

*Change over previous month* compares the index of the month with that of the preceding month. Such comparisons measure the change in the price index between two consecutive months. They serve as useful short-term indicators of the price movements.

*Change over same period of previous year* measures change in the index over a twelve-month period. Such comparisons compare the movement in the price index between similar months in two consecutive years.

### Linking the Old 2012-Based Price Index Series to the New 2018-Based Price Index Series

The IPI and EPI have been rebased from base year 2012 to base year 2018. To facilitate comparison of the historical price indices across base years, the old 2012-based series are linked to the new 2018-based series by re-scaling them via a Linked Coefficient. The Linked Coefficient is the ratio of the annual 2018-based index in 2018 to the annual 2012-based index in 2018.

Example : Linking the old Iron & Steel Index series for IPI prior to 2018, to the 2018-based Iron & Steel Index (2018=100)

1) Calculate the linked coefficient

Year	Iron & Steel Index (2012=100)	Iron & Steel Index (2018=100)	Linked Coefficient
2018	93.4	100.0	$100.0 \div 93.4 = 1.071$

2) Re-scaling the old series to the 2018-based series using the Linked Coefficient

Year	Month	Iron & Steel Index (2012=100)	Iron & Steel Index (2018=100)
2016	Dec	84.0	$84.0 \times 1.071 = 90.0$
2017	Jan	85.6	$85.6 \times 1.071 = 91.7$

### Linking Method for Maintaining the Old Index Reference Period

To continue the old 2012-based index series going forward in time, re-scale the new 2018-based index series to the old base year 2012 level, via a Linked Coefficient. The Linked Coefficient is the ratio of the annual 2012-based index in 2018 to the annual 2018-based index in 2018.

Example : Linking the new 2018-based Iron & Steel Index series for IPI to the 2012-based Iron & Steel Index (2012=100)

1) Calculate the linked coefficient

Year	Iron & Steel Index (2018=100)	Iron & Steel Index (2012=100)	Linked Coefficient
2018	100.0	93.4	$93.4 \div 100.0 = 0.934$

2) Re-scaling the new series to the 2012-based series using the Linked Coefficient

Year	Month	Iron & Steel Index (2018=100)	Iron & Steel Index (2012=100)
2019	Jan	98.6	$98.6 \times 0.934 = 92.1$
2019	Feb	102.4	$102.4 \times 0.934 = 95.6$

### Index Revision

The indices may be revised when late returns and amendments received from respondents are incorporated.

### Dissemination of Data

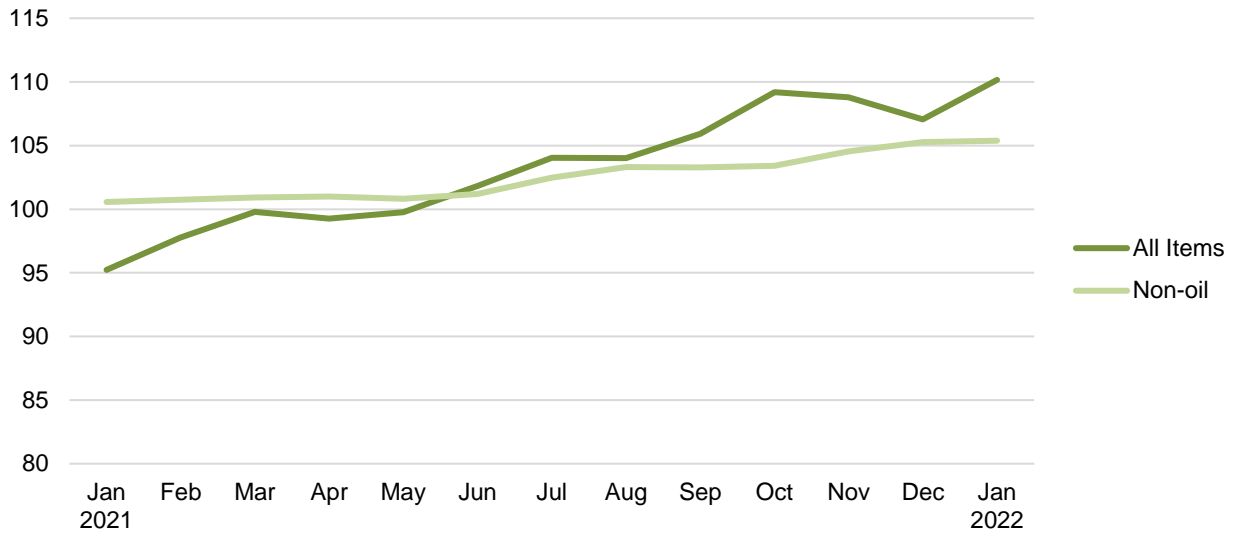
The Import and Export Price Indices are available on the SingStat Website ([www.singstat.gov.sg/tablebuilder](http://www.singstat.gov.sg/tablebuilder)). Excel tables for this month's report are available at <https://www.singstat.gov.sg/publications/economy/import-export-price-indices> or through the QR code below:



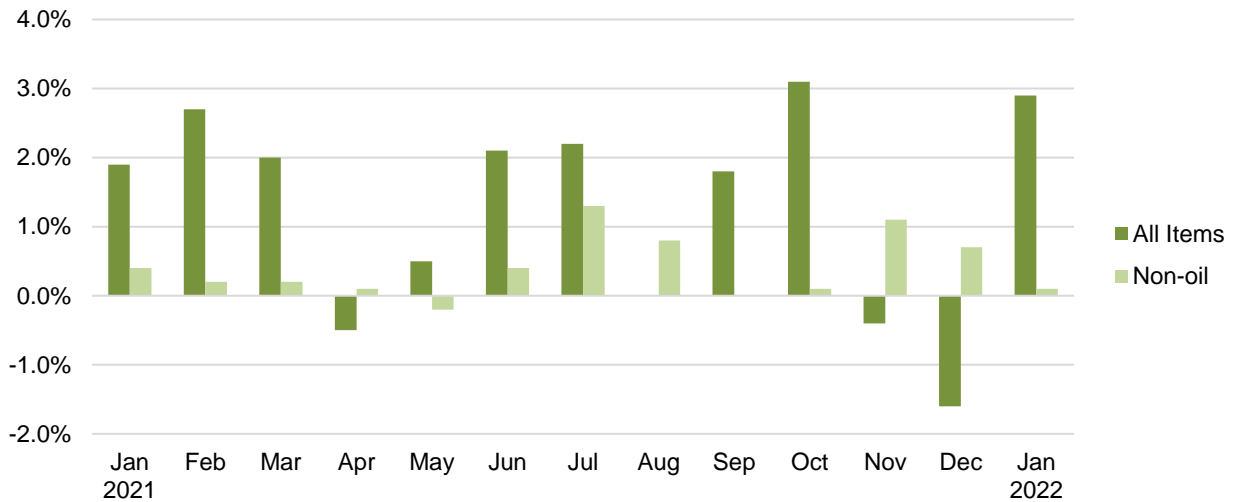
# Import Price Index (2018 = 100)

## January 2022

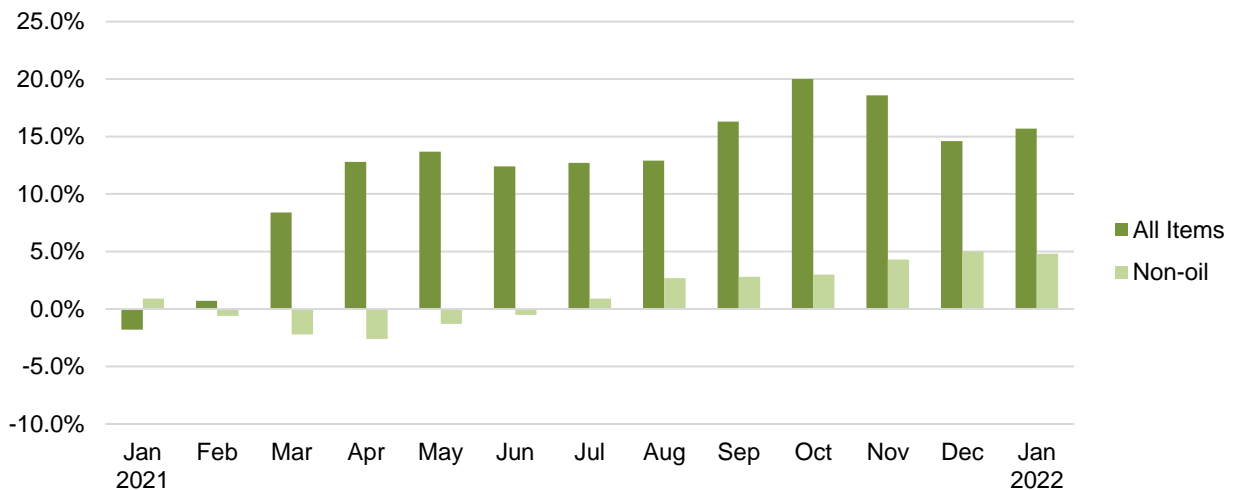
**Chart 1: Index**



**Chart 2: Month-on-Month Change**

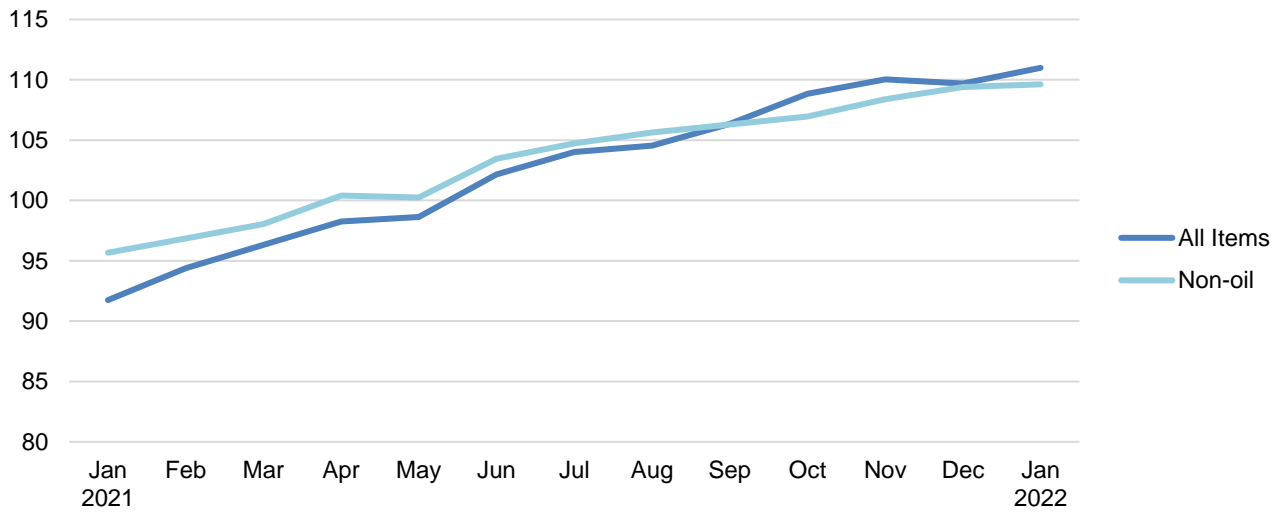


**Chart 3: Year-on-Year Change**

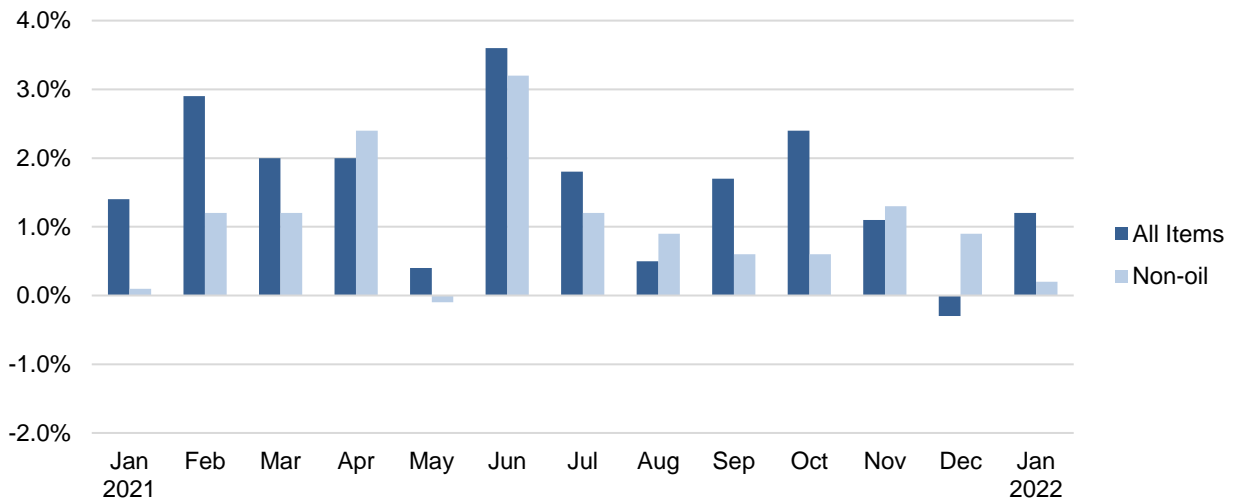


## Export Price Index (2018 = 100) January 2022

**Chart 4: Index**



**Chart 5: Month-on-Month Change**



**Chart 6: Year-on-Year Change**

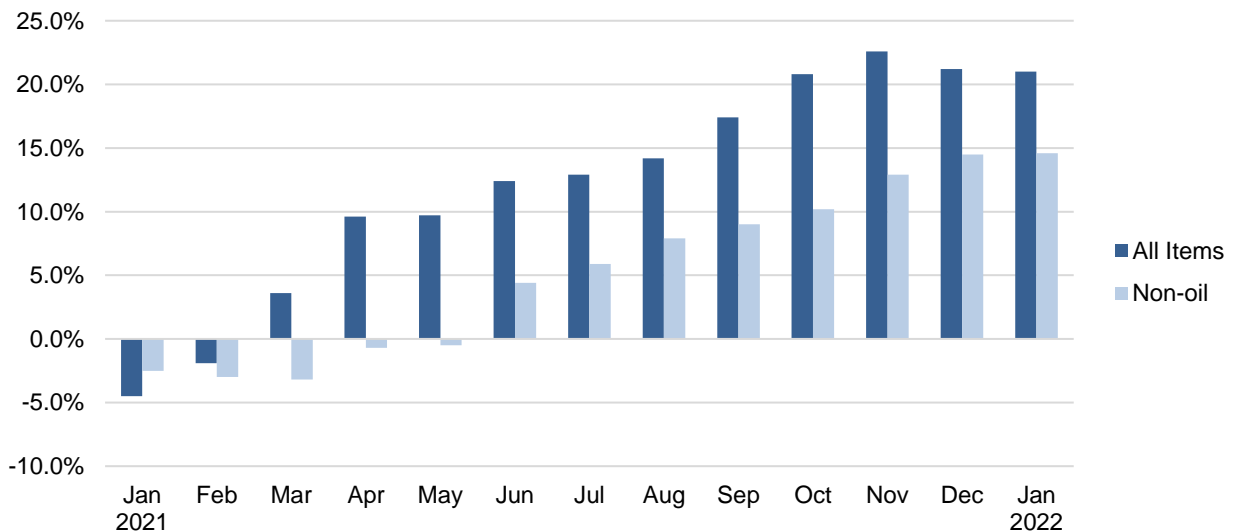




Table 1 Import Price Index

January 2022

Commodity section / division	Weights	Index (2018=100)			% Change		
					Dec 2021	Jan 2022	Jan 2022
		Nov 2021	Dec 2021	Jan 2022	Nov 2021	Dec 2021	Jan 2021
<b>All Items</b>	<b>10,000</b>	<b>108.8</b>	<b>107.1</b>	<b>110.2</b>	<b>-1.6</b>	<b>2.9</b>	<b>15.7</b>
<b>Non-oil Items</b>	<b>7,410</b>	<b>104.5</b>	<b>105.3</b>	<b>105.4</b>	<b>0.7</b>	<b>0.1</b>	<b>4.8</b>
Food & Live Animals	247	107.5	109.6	110.4	2.0	0.7	6.7
Live animals	9	107.3	109.2	111.2	1.8	1.9	10.2
Meat & meat preparations	31	111.2	113.6	114.1	2.1	0.5	6.4
Dairy products & birds' eggs	30	119.2	119.9	122.8	0.6	2.4	15.1
Fish seafood & preparations	34	102.5	105.8	107.8	3.2	2.0	13.7
Cereals & cereal preparations	24	98.0	99.6	99.9	1.7	0.3	1.3
Vegetables & fruit	48	109.2	113.3	112.0	3.7	-1.2	-0.9
Sugar, sugar preparations & honey	9	117.6	118.9	119.3	1.1	0.4	13.3
Coffee, tea, cocoa, spices & manufactures	28	102.2	104.4	103.9	2.2	-0.4	10.2
Animal feeding stuff (excl unmilled cereals)	4	105.7	104.4	105.5	-1.2	1.1	4.1
Miscellaneous food preparations	31	105.1	104.9	106.9	-0.2	1.9	2.8
Beverages & Tobacco	112	103.8	103.7	108.4	-0.1	4.5	1.1
Beverages	84	106.6	106.4	111.1	-0.2	4.4	2.5
Tobacco & manufactures	28	95.4	95.5	100.2	0.1	5.0	-3.4
Crude Materials (excl fuels)	84	108.0	110.5	108.6	2.4	-1.8	7.9
Oil seeds & oleaginous fruits	2	121.7	121.6	120.4	-0.1	-0.9	5.6
Crude rubber	19	93.8	94.2	93.4	0.4	-0.9	-7.0
Cork & wood	3	116.2	118.5	118.5	2.0	-	28.6
Crude fertilizers & minerals	30	103.7	103.8	103.7	0.1	-	2.6
Metalliferous ores & metal scrap	17	134.7	142.7	135.3	6.0	-5.2	29.8
Crude animal & vegetable materials nes	13	98.7	102.8	101.9	4.2	-0.9	6.5
Mineral Fuels, Lubricants & Related Materials	2,590	121.0	112.2	123.8	-7.3	10.4	54.9
Petroleum & products & related materials	2,431	121.9	113.1	125.6	-7.3	11.1	55.2
Gas	159	106.6	98.8	97.4	-7.3	-1.3	48.3
Animal & Vegetable Oils, Fats & Waxes	27	167.1	167.1	170.7	-	2.1	36.8
Fixed vegetable fats & oils	27	167.1	167.1	170.7	-	2.1	36.8
Chemicals & Chemical Products	888	107.5	107.4	108.3	-0.1	0.8	10.1
Organic chemicals	216	105.9	105.8	106.3	-0.1	0.4	14.3
Inorganic chemicals	35	109.3	108.5	108.8	-0.8	0.3	1.4
Dyeing, tanning & colouring materials	33	107.9	107.6	108.6	-0.3	0.9	5.1
Medicinal & pharmaceutical products	101	104.6	104.0	104.9	-0.6	0.8	0.4
Essential oils & perfume; toilet cleaning products	147	111.6	111.3	111.4	-0.3	0.1	4.9
Plastics in primary forms	164	112.3	111.9	112.9	-0.3	0.8	22.1
Plastics in non-primary forms	38	107.3	108.9	108.3	1.5	-0.6	5.9
Chemical materials & products nes	154	102.2	102.8	105.1	0.6	2.3	9.2
Manufactured Goods	505	115.9	116.7	116.3	0.7	-0.4	14.5
Rubber manufactures nes	25	99.9	99.2	98.2	-0.7	-1.0	-0.7
Paper manufactures	51	97.8	98.2	98.3	0.4	0.1	11.2
Textile manufactures	26	101.6	102.2	101.7	0.6	-0.4	2.4
Non-metal mineral manufactures nes	60	111.7	113.7	112.2	1.8	-1.3	9.8
Iron & steel	131	128.8	130.3	128.4	1.2	-1.4	28.2
Non-ferrous metals	84	138.1	138.3	140.4	0.1	1.5	19.1
Manufactures of metals nes	128	103.3	103.8	103.4	0.4	-0.3	5.3
Machinery & Transport Equipment	4,690	101.7	102.5	102.5	0.8	-	2.9
Power-generating machinery & equipment	526	120.3	120.8	119.6	0.4	-1.0	6.9
Machinery specialized for particular industries	306	100.6	101.0	100.1	0.4	-0.9	1.9
Metal working machinery	23	105.0	105.1	104.8	0.1	-0.3	3.0
General industrial machinery	281	102.6	103.1	103.2	0.5	0.1	1.8
Office machines & data-processing machines	457	95.9	97.1	95.2	1.3	-2.0	1.4
Telecommunication apparatus	390	91.9	90.1	89.7	-1.9	-0.5	3.7
Electrical machinery apparatus nes, electrical parts	2,542	100.7	101.9	102.7	1.3	0.7	2.6
Road vehicles	164	98.2	98.2	98.3	-	0.1	-0.3
Miscellaneous Manufactured Articles	857	107.1	107.9	107.6	0.8	-0.3	2.1
Prefab building, sanitary plumbing, lighting nes	12	105.7	105.7	105.7	-	-	-
Furniture, bedding, mattresses, cushions & others	26	110.2	110.0	110.1	-0.2	0.2	4.3
Travel goods, handbags & similar containers	54	106.4	106.6	109.9	0.2	3.1	5.3
Articles of apparel & clothing accessories	79	104.7	105.7	105.5	1.0	-0.2	4.9
Footwear	24	105.2	104.7	104.6	-0.4	-0.2	0.5
Professional scientific & controlling instruments	275	102.0	102.5	101.8	0.5	-0.7	0.4
Photographic & optical goods nes; watches & clocks	106	108.3	109.7	110.7	1.3	0.9	4.6
Miscellaneous manufactured articles nes	283	112.2	113.5	112.4	1.2	-1.0	1.6

Figures may not sum to total due to rounding.

**Table 2 Export Price Index**

**January 2022**

Commodity section / division	Weights	Index (2018=100)			% Change		
					Dec 2021	Jan 2022	Jan 2022
		Nov 2021	Dec 2021	Jan 2022	Nov 2021	Dec 2021	Jan 2021
<b>All Items</b>	<b>10,000</b>	<b>110.0</b>	<b>109.7</b>	<b>111.0</b>	<b>-0.3</b>	<b>1.2</b>	<b>21.0</b>
<b>Non-oil Items</b>	<b>8,022</b>	<b>108.4</b>	<b>109.4</b>	<b>109.6</b>	<b>0.9</b>	<b>0.2</b>	<b>14.6</b>
Food & Live Animals	236	97.4	95.2	96.6	-2.3	1.4	3.9
Dairy products & birds' eggs	5	44.5	44.6	47.5	0.3	6.6	1.6
Fish seafood & preparations	9	96.5	95.0	96.0	-1.5	1.0	15.8
Cereals & cereal preparations	7	97.7	97.8	99.1	0.1	1.3	4.6
Vegetables & fruit	8	100.9	103.2	99.3	2.2	-3.7	7.4
Sugar, sugar preparations & honey	3	112.4	112.8	112.1	0.4	-0.6	7.0
Coffee, tea, cocoa, spices & manufactures	26	112.8	112.1	113.4	-0.6	1.1	8.6
Animal feeding stuff (excl unmilled cereals)	7	113.4	117.1	91.8	3.2	-21.6	-16.9
Miscellaneous food preparations	171	95.5	92.3	95.1	-3.3	3.0	3.4
Beverages & Tobacco	103	107.7	106.8	109.1	-0.8	2.1	6.2
Beverages	75	109.7	108.3	111.8	-1.2	3.2	7.9
Tobacco & manufactures	28	102.4	102.8	101.9	0.4	-0.9	1.4
Crude Materials (excl fuels)	91	108.2	109.2	107.6	0.9	-1.5	25.9
Crude rubber	35	93.2	94.1	90.8	1.0	-3.5	28.2
Pulp and waste paper	26	108.6	108.8	107.0	0.2	-1.7	21.6
Metalliferous ores & metal scrap	26	129.1	131.4	132.1	1.8	0.5	30.5
Crude animal & vegetable materials nes	4	101.3	100.5	100.4	-0.8	-0.1	5.4
Mineral Fuels, Lubricants & Related Materials	1,978	116.7	110.9	116.5	-5.0	5.1	53.7
Petroleum & products & related materials	1,978	116.7	110.9	116.5	-5.0	5.1	53.7
Animal & Vegetable Oils, Fats & Waxes	5	127.6	133.7	132.0	4.8	-1.3	24.0
Fixed vegetable fats & oils	5	127.6	133.7	132.0	4.8	-1.3	24.0
Chemicals & Chemical Products	1,525	104.4	105.0	105.1	0.6	0.1	13.0
Organic chemicals	428	109.4	109.0	109.0	-0.4	-0.1	25.4
Inorganic chemicals	14	132.7	136.4	142.2	2.8	4.2	21.5
Dyeing, tanning & colouring materials	37	100.2	102.8	103.6	2.6	0.7	9.6
Medicinal & pharmaceutical products	250	97.3	97.6	96.9	0.3	-0.8	0.1
Essential oils & perfume; toilet cleaning products	232	101.4	102.3	100.9	0.9	-1.4	1.6
Plastics in primary forms	355	105.4	106.7	107.9	1.2	1.2	21.2
Plastics in non-primary forms	29	113.2	113.7	112.0	0.5	-1.5	5.4
Chemical materials & products nes	181	101.6	102.8	103.5	1.2	0.7	6.0
Manufactured Goods	318	115.4	115.8	120.1	0.4	3.7	17.9
Rubber manufactures nes	22	98.0	99.9	100.6	1.9	0.7	2.5
Paper manufactures	41	99.2	102.5	104.4	3.3	1.8	9.9
Textile manufactures	19	97.5	98.1	97.1	0.6	-1.0	-3.6
Non-metal mineral manufactures nes	14	98.3	98.6	97.5	0.4	-1.2	0.4
Iron & steel	66	123.8	123.1	136.7	-0.5	11.0	36.4
Non-ferrous metals	67	151.5	151.5	158.5	-	4.6	39.5
Manufactures of metals nes	89	100.2	100.0	99.3	-0.2	-0.7	-0.2
Machinery & Transport Equipment	4,836	111.1	112.6	112.6	1.4	-	17.9
Power-generating machinery & equipment	418	100.3	100.7	99.8	0.4	-0.9	1.2
Machinery specialized for particular industries	437	101.6	108.0	106.5	6.3	-1.4	14.5
Metal working machinery	25	100.5	101.2	99.8	0.6	-1.4	2.7
General industrial machinery	212	103.4	103.5	103.8	0.1	0.3	2.1
Office machines & data-processing machines	467	100.4	102.1	101.3	1.7	-0.8	1.6
Telecommunication apparatus	366	99.0	96.5	93.4	-2.6	-3.2	6.2
Electrical machinery apparatus nes, electrical parts	2,814	118.3	119.9	120.7	1.4	0.7	27.1
Road vehicles	98	108.3	108.8	109.5	0.5	0.6	3.2
Miscellaneous Manufactured Articles	908	101.1	101.2	101.3	0.1	0.1	1.7
Prefab building, sanitary plumbing, lighting nes	3	114.5	115.9	114.2	1.2	-1.4	2.4
Furniture, bedding, mattresses, cushions & others	5	102.3	103.7	104.6	1.3	0.9	0.5
Travel goods, handbags & similar containers	37	98.7	99.3	99.4	0.6	0.1	3.7
Articles of apparel & clothing accessories	40	110.0	112.0	114.4	1.8	2.1	3.3
Footwear	14	120.9	115.2	114.1	-4.7	-0.9	24.8
Professional scientific & controlling instruments	365	91.7	92.0	92.1	0.4	0.1	3.7
Photographic & optical goods nes; watches & clocks	98	104.6	105.6	106.0	0.9	0.3	2.6
Miscellaneous manufactured articles nes	345	108.3	107.8	107.6	-0.4	-0.2	-1.4

Figures may not sum to total due to rounding.

**Table 3 Import Price Index**

Section	All Items	Non-oil Items	Food & Live Animals	Beverages & Tobacco	Crude Materials	Mineral Fuels	Animal & Vegetable Oils, Fats & Waxes	Chemicals & Chemical Products	Manu- factured Goods	Machinery & Transport Equipment	Misc. Manu- factured Articles
Weights	<b>10,000</b>	<b>7,410</b>	247	112	84	2,590	27	888	505	4,690	857
<b>Index (2018=100)</b>											
2018	<b>100.0</b>	<b>100.0</b>	100.0	100.0	100.0	100.0	100.0	100.0	100.0	100.0	100.0
2019	<b>99.0</b>	<b>100.9</b>	101.5	100.4	101.2	93.4	90.4	98.6	99.9	101.3	102.0
2020	<b>92.0</b>	<b>101.3</b>	102.9	97.9	101.8	65.6	103.1	97.4	99.8	101.3	106.0
2021	<b>102.7</b>	<b>102.3</b>	105.4	106.4	104.7	104.0	149.6	103.6	109.9	99.9	106.4
2021											
Jan	<b>95.2</b>	<b>100.6</b>	103.5	107.2	100.6	80.0	124.7	98.3	101.6	99.5	105.4
Feb	<b>97.8</b>	<b>100.7</b>	104.5	107.0	99.3	89.4	129.8	99.4	103.3	99.3	105.9
Mar	<b>99.8</b>	<b>100.9</b>	103.5	107.1	102.0	96.5	138.2	101.0	104.9	99.2	105.2
Apr	<b>99.3</b>	<b>101.0</b>	103.4	106.9	102.7	94.3	143.3	102.0	105.9	98.9	105.5
May	<b>99.8</b>	<b>100.8</b>	103.9	107.4	103.0	96.8	151.3	102.8	107.4	98.2	105.7
Jun	<b>101.8</b>	<b>101.2</b>	105.0	107.2	105.4	103.7	148.4	102.8	109.6	98.4	106.1
Jul	<b>104.0</b>	<b>102.5</b>	105.6	107.6	105.6	108.4	152.1	104.8	112.1	99.6	106.9
Aug	<b>104.0</b>	<b>103.3</b>	106.1	107.4	107.0	106.1	154.3	105.5	112.6	100.6	107.2
Sep	<b>105.9</b>	<b>103.3</b>	105.8	107.0	106.4	113.4	155.6	105.5	113.6	100.5	106.9
Oct	<b>109.2</b>	<b>103.4</b>	106.7	104.3	106.4	125.7	162.8	106.6	114.9	100.3	106.9
Nov	<b>108.8</b>	<b>104.5</b>	107.5	103.8	108.0	121.0	167.1	107.5	115.9	101.7	107.1
Dec	<b>107.1</b>	<b>105.3</b>	109.6	103.7	110.5	112.2	167.1	107.4	116.7	102.5	107.9
2022											
Jan	<b>110.2</b>	<b>105.4</b>	110.4	108.4	108.6	123.8	170.7	108.3	116.3	102.5	107.6
<b>Percentage Change over same period of previous year (%)</b>											
2019	<b>-1.0</b>	<b>0.9</b>	1.5	0.4	1.2	-6.6	-9.6	-1.4	-0.1	1.3	2.0
2020	<b>-7.0</b>	<b>0.3</b>	1.4	-2.5	0.6	-29.8	14.0	-1.2	-0.2	-	3.8
2021	<b>11.6</b>	<b>1.0</b>	2.4	8.7	2.9	58.5	45.1	6.3	10.1	-1.4	0.4
2021											
Jan	<b>-1.8</b>	<b>0.9</b>	0.5	5.8	-1.0	-10.6	21.2	2.1	3.6	-0.2	3.0
Feb	<b>0.7</b>	<b>-0.6</b>	1.3	4.6	-3.3	5.0	27.7	1.2	3.4	-2.1	1.6
Mar	<b>8.4</b>	<b>-2.2</b>	0.2	3.0	-1.5	60.2	39.7	2.1	4.4	-4.2	-1.5
Apr	<b>12.8</b>	<b>-2.6</b>	-1.1	2.7	0.7	118.5	48.1	4.5	5.4	-5.2	-2.3
May	<b>13.7</b>	<b>-1.3</b>	-0.5	10.6	1.1	107.9	60.6	6.4	7.2	-4.1	-2.0
Jun	<b>12.4</b>	<b>-0.5</b>	2.0	10.5	3.9	76.3	53.6	6.5	10.1	-3.6	-0.6
Jul	<b>12.7</b>	<b>0.9</b>	2.2	14.5	3.6	64.4	55.1	6.9	12.4	-1.9	0.2
Aug	<b>12.9</b>	<b>2.7</b>	3.2	14.5	6.5	56.2	51.5	8.0	13.5	0.2	0.7
Sep	<b>16.3</b>	<b>2.8</b>	3.4	13.0	5.1	76.4	49.5	8.5	14.5	0.4	0.5
Oct	<b>20.0</b>	<b>3.0</b>	5.2	9.7	4.5	96.0	50.2	9.6	15.5	0.2	1.1
Nov	<b>18.6</b>	<b>4.3</b>	5.6	9.3	6.4	79.1	47.4	10.4	15.6	2.0	1.6
Dec	<b>14.6</b>	<b>5.0</b>	7.2	7.8	8.9	51.6	39.2	10.1	15.9	2.8	3.0
2022											
Jan	<b>15.7</b>	<b>4.8</b>	6.7	1.1	7.9	54.9	36.8	10.1	14.5	2.9	2.1

**Table 4 Export Price Index**

Section	All Items	Non-oil Items	Food & Live Animals	Beverages & Tobacco	Crude Materials	Mineral Fuels	Animal & Vegetable Oils, Fats & Waxes	Chemicals & Chemical Products	Manufactured Goods	Machinery & Transport Equipment	Misc. Manufactured Articles
Weights	<b>10,000</b>	<b>8,022</b>	236	103	91	1,978	5	1,525	318	4,836	908
<b>Index (2018=100)</b>											
2018	<b>100.0</b>	<b>100.0</b>	100.0	100.0	100.0	100.0	100.0	100.0	100.0	100.0	100.0
2019	<b>98.6</b>	<b>100.1</b>	97.6	102.6	90.6	92.4	97.1	94.8	98.7	101.8	101.9
2020	<b>91.7</b>	<b>98.6</b>	94.7	103.4	81.0	63.7	101.9	91.1	97.9	100.6	103.2
2021	<b>102.1</b>	<b>103.0</b>	95.1	105.4	98.9	98.3	119.4	100.3	110.5	104.4	99.7
2021											
Jan	<b>91.7</b>	<b>95.7</b>	92.9	102.7	85.4	75.8	106.5	93.0	101.9	95.5	99.6
Feb	<b>94.4</b>	<b>96.8</b>	93.5	105.8	89.3	84.5	109.1	94.6	104.1	96.8	99.0
Mar	<b>96.3</b>	<b>98.0</b>	94.8	102.9	91.1	89.3	112.4	97.8	105.7	97.5	99.3
Apr	<b>98.3</b>	<b>100.4</b>	96.1	105.3	94.2	89.6	116.0	99.4	107.4	100.7	98.9
May	<b>98.6</b>	<b>100.3</b>	95.9	104.6	97.2	92.0	117.8	100.0	111.1	100.0	99.3
Jun	<b>102.2</b>	<b>103.5</b>	94.6	104.5	96.5	96.9	117.9	100.3	110.6	105.3	99.5
Jul	<b>104.0</b>	<b>104.7</b>	95.1	106.1	102.8	101.1	120.5	102.0	112.5	106.4	99.9
Aug	<b>104.5</b>	<b>105.6</b>	93.5	107.2	103.1	100.1	120.6	101.6	113.0	108.0	100.3
Sep	<b>106.3</b>	<b>106.3</b>	95.9	105.7	102.7	106.5	124.6	101.9	113.2	109.2	99.0
Oct	<b>108.8</b>	<b>106.9</b>	95.6	105.6	106.7	116.5	126.7	103.1	115.2	109.5	99.7
Nov	<b>110.0</b>	<b>108.4</b>	97.4	107.7	108.2	116.7	127.6	104.4	115.4	111.1	101.1
Dec	<b>109.7</b>	<b>109.4</b>	95.2	106.8	109.2	110.9	133.7	105.0	115.8	112.6	101.2
2022											
Jan	<b>111.0</b>	<b>109.6</b>	96.6	109.1	107.6	116.5	132.0	105.1	120.1	112.6	101.3
<b>Percentage Change over same period of previous year (%)</b>											
2019	<b>-1.4</b>	<b>0.1</b>	-2.4	2.6	-9.4	-7.6	-2.9	-5.2	-1.3	1.8	1.9
2020	<b>-7.0</b>	<b>-1.5</b>	-3.0	0.8	-10.6	-31.0	4.9	-4.0	-0.8	-1.2	1.3
2021	<b>11.3</b>	<b>4.5</b>	0.4	1.9	22.1	54.3	17.2	10.1	12.9	3.8	-3.3
2021											
Jan	<b>-4.5</b>	<b>-2.5</b>	-2.1	-0.8	3.4	-13.8	6.8	2.2	5.1	-4.7	-1.1
Feb	<b>-1.9</b>	<b>-3.0</b>	-4.1	0.3	8.6	4.0	3.5	1.8	6.8	-5.1	-3.6
Mar	<b>3.6</b>	<b>-3.2</b>	-1.3	-3.1	10.5	50.3	1.5	4.8	8.6	-6.0	-5.9
Apr	<b>9.6</b>	<b>-0.7</b>	3.3	-2.0	14.9	106.1	8.9	7.8	11.2	-3.1	-6.4
May	<b>9.7</b>	<b>-0.5</b>	1.4	-1.9	16.5	100.7	11.8	10.4	14.7	-3.7	-5.8
Jun	<b>12.4</b>	<b>4.4</b>	0.8	0.7	16.4	67.9	15.0	11.6	14.0	3.6	-4.4
Jul	<b>12.9</b>	<b>5.9</b>	-	3.9	29.9	57.1	21.6	13.9	14.8	4.9	-4.0
Aug	<b>14.2</b>	<b>7.9</b>	-1.2	5.1	32.7	52.2	22.5	13.5	15.1	8.2	-3.7
Sep	<b>17.4</b>	<b>9.0</b>	-1.1	4.5	29.7	70.3	26.7	13.7	15.1	10.2	-4.5
Oct	<b>20.8</b>	<b>10.2</b>	2.5	5.2	34.7	87.5	29.9	13.8	17.3	11.2	-1.9
Nov	<b>22.6</b>	<b>12.9</b>	3.6	6.9	36.4	81.1	30.7	14.3	16.5	14.9	0.4
Dec	<b>21.2</b>	<b>14.5</b>	3.4	5.6	34.3	58.7	31.6	14.2	14.9	17.5	1.5
2022											
Jan	<b>21.0</b>	<b>14.6</b>	3.9	6.2	25.9	53.7	24.0	13.0	17.9	17.9	1.7

**NOTATIONS**

- nes not elsewhere specified
- nil or negligible

**NOTES**

The Import and Export Price Indices report contains statistics that are the most recent available at the time of its preparation.

Some statistics, particularly those for the most recent time periods, are provisional and may be subject to revision in later issues.