



Import & Export Price Indices October 2021

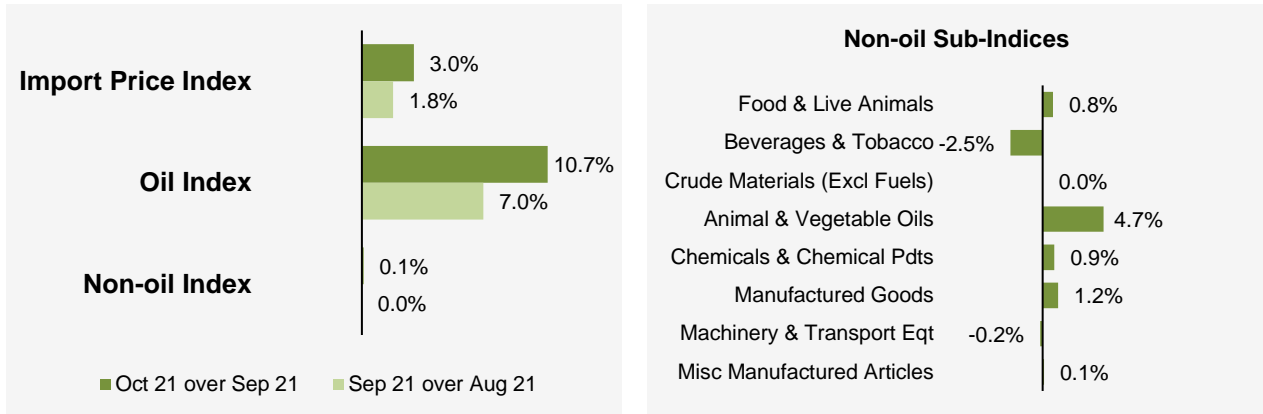
IMPORT AND EXPORT PRICE INDICES, October 2021
ISSN 2591-7463

© Department of Statistics, Ministry of Trade & Industry, Republic of Singapore

Reproducing or quoting any part of this publication is permitted, provided this publication is accredited as the source. Please refer to the SingStat Website Terms of Use (<http://www.singstat.gov.sg/terms-of-use>) for more details on the conditions of use of this publication.

Import Price Index (2018 = 100) October 2021

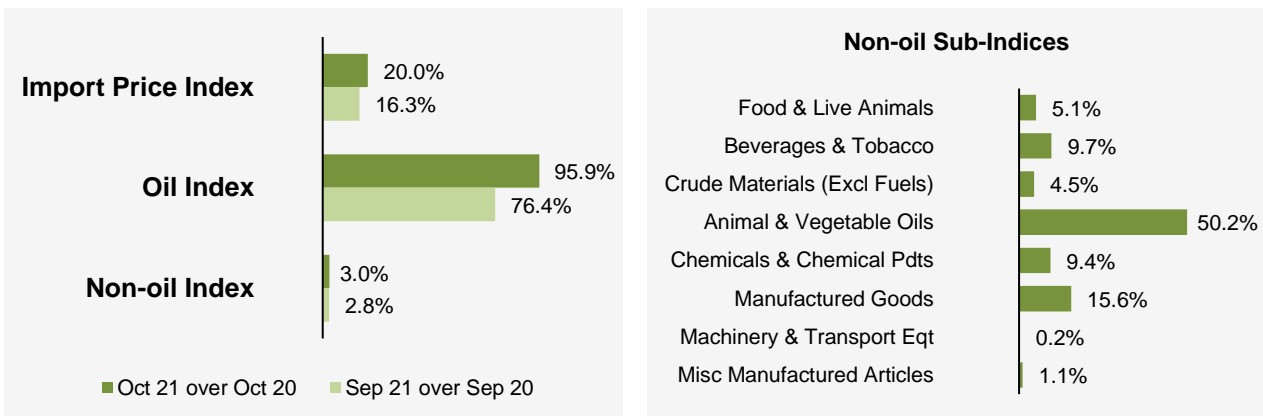
Month-on-Month Change



The Import Price Index rose 3.0% in October 2021, following the 1.8% gain in September 2021. The Oil index gained 10.7%, extending the 7.0% increase in the previous month. The Non-oil index increased 0.1% in October 2021. It was unchanged in September 2021.

Among the Non-oil sub-indices, the increases were led by the Manufactured Goods (1.2%) index, due mainly to higher prices of iron & steel, and the Chemicals & Chemical Products (0.9%) index. The increases were partially moderated by declines in the Beverages & Tobacco (-2.5%) index, due mainly to lower prices of cigarettes, and the Machinery & Transport Equipment (-0.2%) index.

Year-on-Year Change

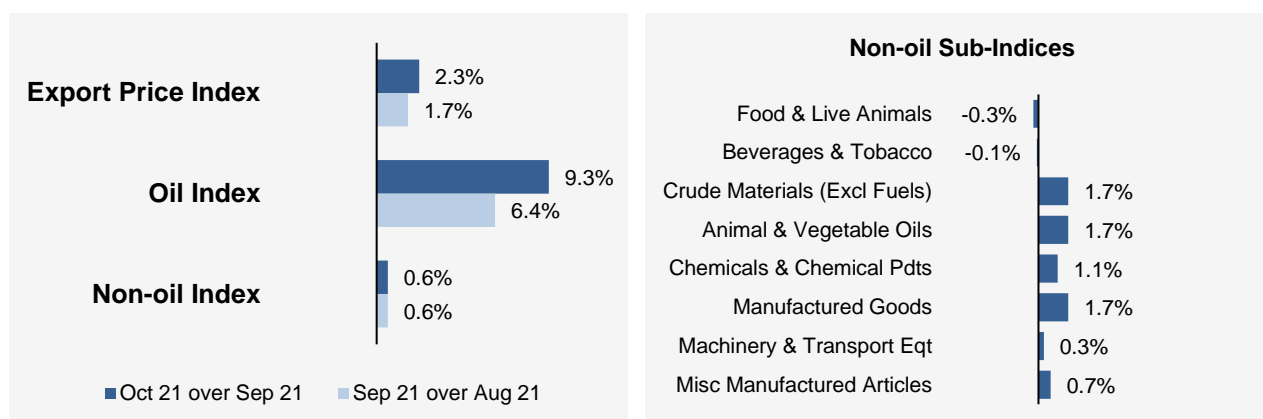


The Import Price Index rose 20.0% in October 2021 from a year ago, extending the 16.3% gain in September 2021. The Oil and Non-oil indices increased 95.9% and 3.0% respectively.

All Non-oil sub-indices rose. Higher prices were registered for Animal & Vegetable Oils (50.2%), Manufactured Goods (15.6%), Beverages & Tobacco (9.7%), Chemicals & Chemical Products (9.4%), Food & Live Animals (5.1%), Crude Materials (4.5%), Miscellaneous Manufactured Articles (1.1%) and Machinery & Transport Equipment (0.2%).

Export Price Index (2018 = 100) October 2021

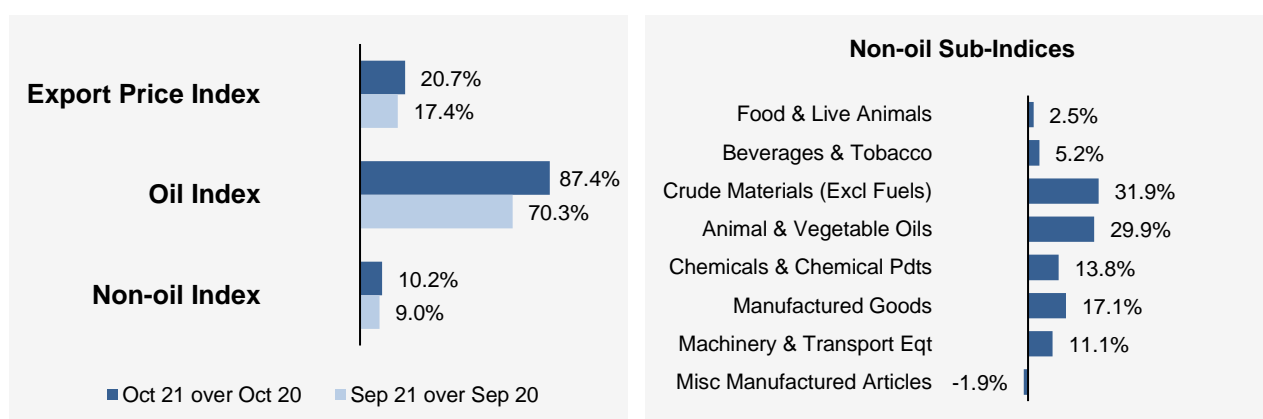
Month-on-Month Change



The Export Price Index increased 2.3% in October 2021, following the 1.7% rise in September 2021. The Oil index rose 9.3%, extending the 6.4% increase in the previous month. The Non-oil index grew by 0.6% in October 2021, following the 0.6% gain in September 2021.

Among the Non-oil sub-indices, the increases were led by the Chemicals & Chemical Products (1.1%) index, due mainly to higher prices of plastics, and the Machinery & Transport Equipment (0.3%) index. The increases were partially moderated by declines in the Food & Live Animals (-0.3%) and Beverages & Tobacco (-0.1%) indices.

Year-on-Year Change



The Export Price Index increased 20.7% in October 2021 from a year ago, following the 17.4% rise in September 2021. The Oil and Non-oil indices went up 87.4% and 10.2% respectively.

For the Non-oil sub-indices, higher prices of Crude Materials (31.9%), Animal & Vegetable Oils (29.9%), Manufactured Goods (17.1%), Chemicals & Chemical Products (13.8%), Machinery & Transport Equipment (11.1%), Beverages & Tobacco (5.2%) and Food & Live Animals (2.5%) were partially offset by lower prices of Miscellaneous Manufactured Articles (-1.9%).

Technical Note

The **Import Price Index (IPI)** is used primarily as an indicator to track the price trends of imported goods into Singapore. Prices of imports, valued at cif (cost, insurance and freight) are obtained monthly from major importers. The weighting pattern of the index is derived from import statistics for 2018.

The **Export Price Index (EPI)** measures changes in the price of all exports of merchandise from Singapore, including re-exports. In general, prices are obtained from major exporters of the selected commodities. Prices used in the index computation, are the prices of goods that physically leave Singapore's main ports of export; also termed as free on board prices. The weights of the index are derived from the distribution of export by commodity in 2018.

Index Formula

The 2018-based series is compiled using the Laspeyres formula where the price and weight reference periods are aligned to the year 2018. The geometric mean formula has been adopted in the computation of unweighted elementary aggregate price indices. The arithmetic mean formula is applied in compiling indices at higher levels of aggregation where weights of specific sub-indices are available.

Measurement of Changes in Price Indices

Change over previous month compares the index of the month with that of the preceding month. Such comparisons measure the change in the price index between two consecutive months. They serve as useful short-term indicators of the price movements.

Change over same period of previous year measures change in the index over a twelve-month period. Such comparisons compare the movement in the price index between similar months in two consecutive years.

Linking the Old 2012-Based Price Index Series to the New 2018-Based Price Index Series

The IPI and EPI have been rebased from base year 2012 to base year 2018. To facilitate comparison of the historical price indices across base years, the old 2012-based series are linked to the new 2018-based series by re-scaling them via a Linked Coefficient. The Linked Coefficient is the ratio of the annual 2018-based index in 2018 to the annual 2012-based index in 2018.

Example : Linking the old Iron & Steel Index series for IPI prior to 2018, to the 2018-based Iron & Steel Index (2018=100)

1) Calculate the linked coefficient

Year	Iron & Steel Index (2012=100)	Iron & Steel Index (2018=100)	Linked Coefficient
2018	93.4	100.0	$100.0 \div 93.4 = 1.071$

2) Re-scaling the old series to the 2018-based series using the Linked Coefficient

Year	Month	Iron & Steel Index (2012=100)	Iron & Steel Index (2018=100)
2016	Dec	84.0	$84.0 \times 1.071 = 90.0$
2017	Jan	85.6	$85.6 \times 1.071 = 91.7$

Linking Method for Maintaining the Old Index Reference Period

To continue the old 2012-based index series going forward in time, re-scale the new 2018-based index series to the old base year 2012 level, via a Linked Coefficient. The Linked Coefficient is the ratio of the annual 2012-based index in 2018 to the annual 2018-based index in 2018.

Example : Linking the new 2018-based Iron & Steel Index series for IPI to the 2012-based Iron & Steel Index (2012=100)

1) Calculate the linked coefficient

Year	Iron & Steel Index (2018=100)	Iron & Steel Index (2012=100)	Linked Coefficient
2018	100.0	93.4	$93.4 \div 100.0 = 0.934$

2) Re-scaling the new series to the 2012-based series using the Linked Coefficient

Year	Month	Iron & Steel Index (2018=100)	Iron & Steel Index (2012=100)
2019	Jan	98.6	$98.6 \times 0.934 = 92.1$
2019	Feb	102.4	$102.4 \times 0.934 = 95.6$

Index Revision

The indices may be revised when late returns and amendments received from respondents are incorporated.

Dissemination of Data

The Import and Export Price Indices are available on the SingStat Website (www.singstat.gov.sg/tablebuilder). Excel tables for this month's report are available at <https://www.singstat.gov.sg/publications/economy/import-export-price-indices> or through the QR code below:



Import Price Index (2018 = 100) October 2021

Chart 1: Index

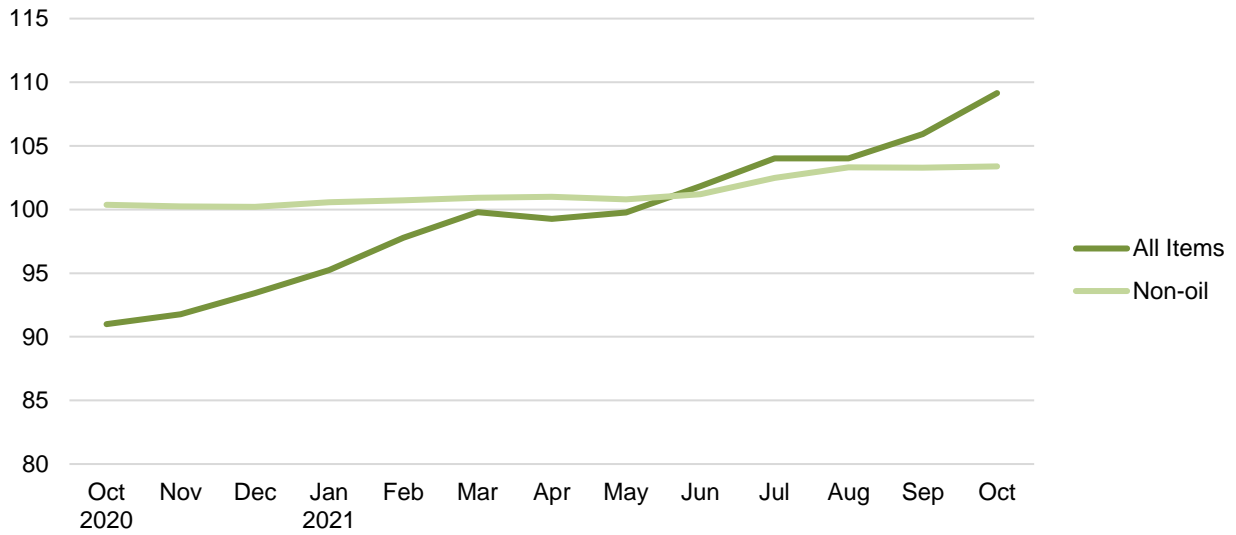


Chart 2: Month-on-Month Change

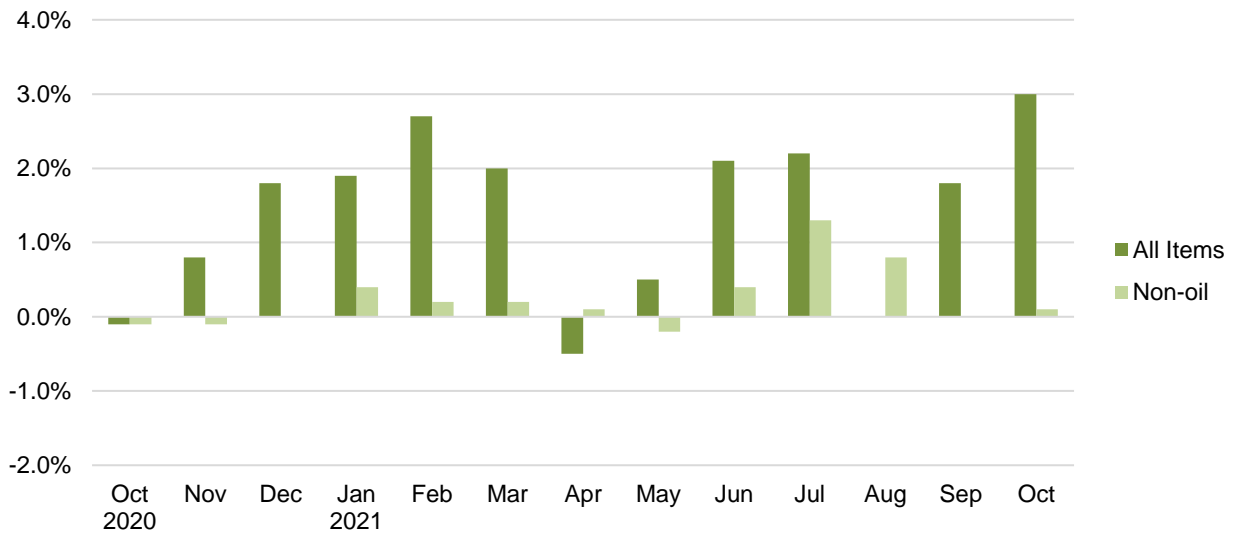
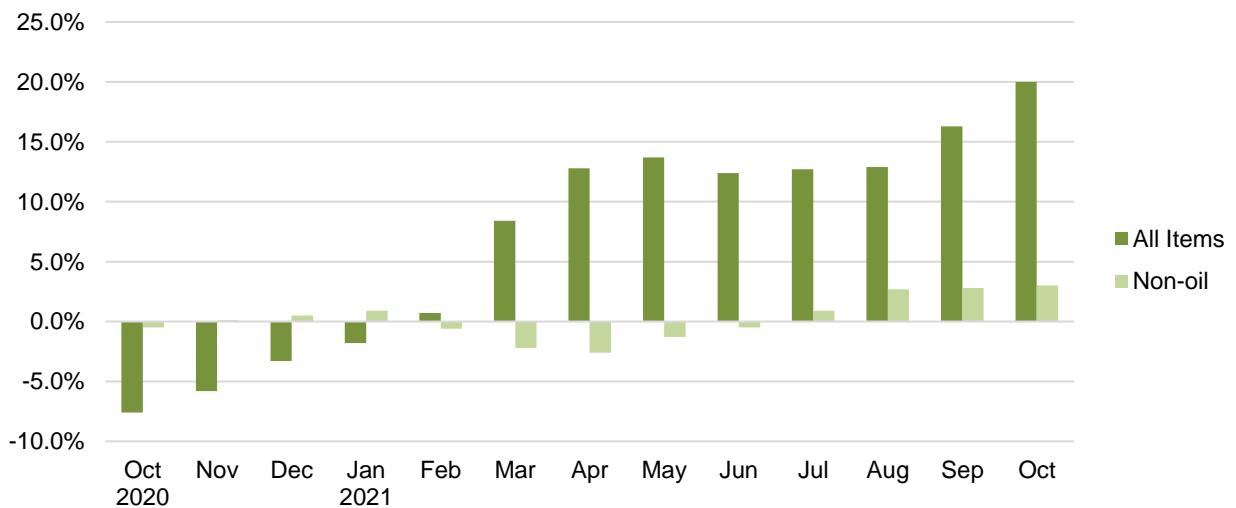


Chart 3: Year-on-Year Change



Export Price Index (2018 = 100) October 2021

Chart 4: Index

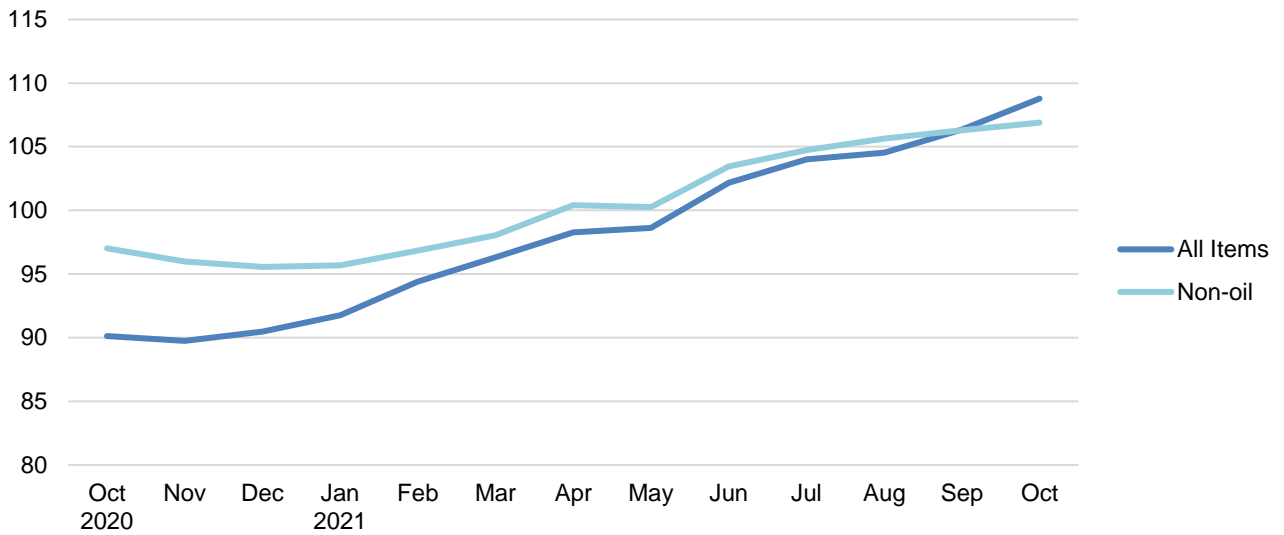


Chart 5: Month-on-Month Change

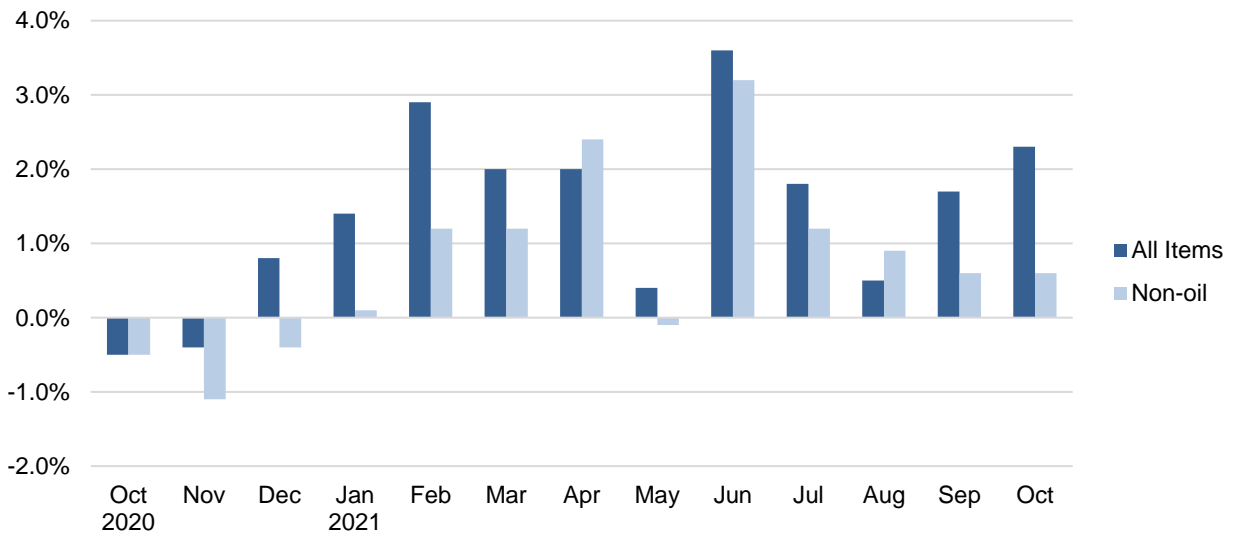


Chart 6: Year-on-Year Change

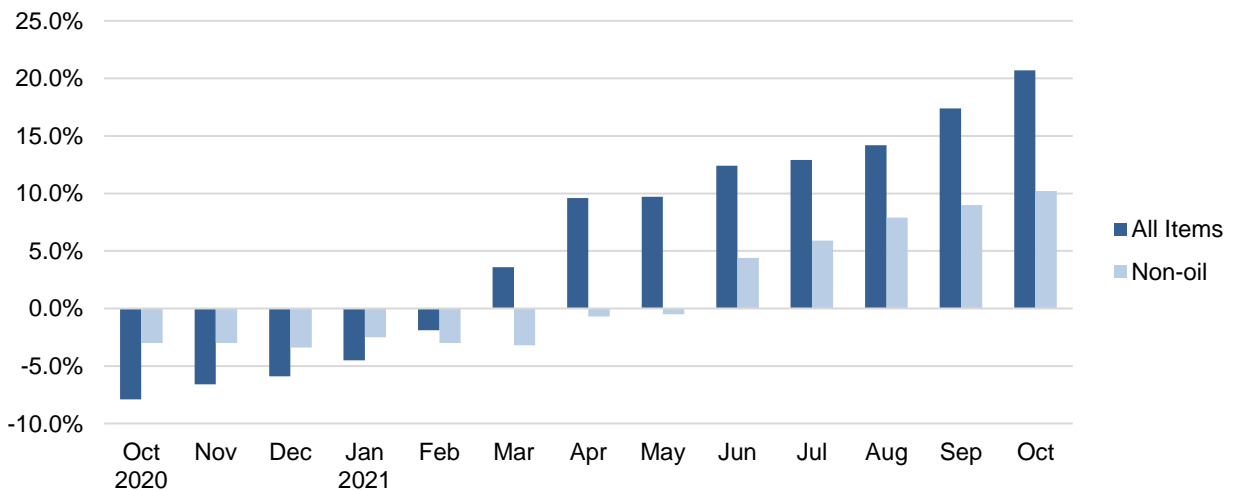


Table 1 Import Price Index

October 2021

Commodity section / division	Weights	Index (2018=100)			% Change		
					Sep 2021	Oct 2021	Oct 2021
		Aug 2021	Sep 2021	Oct 2021	Aug 2021	Sep 2021	Oct 2020
All Items	10,000	104.0	105.9	109.1	1.8	3.0	20.0
Non-oil Items	7,410	103.3	103.3	103.4	-	0.1	3.0
Food & Live Animals	247	106.1	105.8	106.6	-0.3	0.8	5.1
Live animals	9	101.5	104.9	106.9	3.3	1.9	6.9
Meat & meat preparations	31	110.5	111.3	112.1	0.7	0.8	6.7
Dairy products & birds' eggs	30	116.8	116.6	117.3	-0.2	0.6	10.9
Fish seafood & preparations	34	96.4	96.5	99.2	0.1	2.8	6.5
Cereals & cereal preparations	24	98.2	97.9	98.0	-0.3	0.1	-2.1
Vegetables & fruit	48	108.9	106.4	107.7	-2.3	1.3	0.3
Sugar, sugar preparations & honey	9	116.6	115.6	116.8	-0.9	1.0	15.1
Coffee, tea, cocoa, spices & manufactures	28	102.9	105.1	103.5	2.1	-1.4	14.0
Animal feeding stuff (excl unmilled cereals)	4	103.5	102.8	104.7	-0.7	1.8	5.0
Miscellaneous food preparations	31	104.9	103.8	103.8	-1.1	-	-1.0
Beverages & Tobacco	112	107.4	107.0	104.3	-0.4	-2.5	9.7
Beverages	84	108.5	108.0	107.3	-0.4	-0.6	14.4
Tobacco & manufactures	28	104.2	104.1	95.2	-0.1	-8.5	-3.8
Crude Materials (excl fuels)	84	107.0	106.4	106.4	-0.6	-	4.5
Oil seeds & oleaginous fruits	2	120.7	120.5	120.7	-0.2	0.2	6.8
Crude rubber	19	93.4	93.1	93.3	-0.4	0.3	-13.6
Cork & wood	3	98.7	111.4	111.4	12.9	-	19.7
Crude fertilizers & minerals	30	103.5	103.5	103.6	0.1	-	2.2
Metalliferous ores & metal scrap	17	135.5	130.5	130.2	-3.7	-0.2	28.4
Crude animal & vegetable materials nes	13	96.7	96.7	96.7	-	-	1.5
Mineral Fuels, Lubricants & Related Materials	2,590	106.1	113.4	125.6	7.0	10.7	95.9
Petroleum & products & related materials	2,431	107.0	114.8	127.2	7.4	10.8	96.7
Gas	159	92.2	92.4	101.6	0.3	9.9	80.4
Animal & Vegetable Oils, Fats & Waxes	27	154.3	155.6	162.8	0.8	4.7	50.2
Fixed vegetable fats & oils	27	154.3	155.6	162.8	0.8	4.7	50.2
Chemicals & Chemical Products	888	105.5	105.5	106.5	-	0.9	9.4
Organic chemicals	216	103.2	102.6	104.7	-0.6	2.0	17.0
Inorganic chemicals	35	106.9	103.0	108.5	-3.6	5.3	2.0
Dyeing, tanning & colouring materials	33	107.9	107.5	107.6	-0.4	0.1	3.2
Medicinal & pharmaceutical products	101	105.1	104.3	104.2	-0.8	-	0.5
Essential oils & perfume; toilet cleaning products	147	111.6	111.5	111.5	-0.1	-	4.8
Plastics in primary forms	164	106.0	108.3	109.7	2.1	1.3	24.9
Plastics in non-primary forms	38	104.9	104.8	105.7	-0.1	0.9	2.0
Chemical materials & products nes	154	102.2	102.0	101.6	-0.2	-0.4	1.4
Manufactured Goods	505	112.6	113.6	115.0	1.0	1.2	15.6
Rubber manufactures nes	25	98.6	98.4	98.2	-0.2	-0.2	-3.3
Paper manufactures	51	96.8	96.6	97.0	-0.2	0.4	8.3
Textile manufactures	26	100.4	100.6	101.2	0.2	0.5	1.3
Non-metal mineral manufactures nes	60	106.0	107.3	108.6	1.2	1.2	6.1
Iron & steel	131	123.9	126.7	128.6	2.3	1.5	34.6
Non-ferrous metals	84	134.5	135.6	138.4	0.8	2.1	27.7
Manufactures of metals nes	128	101.0	101.1	101.7	0.1	0.6	2.2
Machinery & Transport Equipment	4,690	100.6	100.5	100.3	-	-0.2	0.2
Power-generating machinery & equipment	526	114.4	113.6	113.7	-0.8	0.1	2.7
Machinery specialized for particular industries	306	100.4	99.8	100.1	-0.6	0.3	-0.6
Metal working machinery	23	104.3	104.1	104.2	-0.2	0.1	1.5
General industrial machinery	281	101.6	101.1	101.5	-0.5	0.3	-0.8
Office machines & data-processing machines	457	96.1	94.8	94.5	-1.3	-0.4	-4.1
Telecommunication apparatus	390	91.7	91.4	91.4	-0.3	-	5.4
Electrical machinery apparatus nes, electrical parts	2,542	99.9	100.4	100.0	0.5	-0.4	0.1
Road vehicles	164	97.9	98.3	98.1	0.3	-0.1	-1.3
Miscellaneous Manufactured Articles	857	107.2	106.9	107.0	-0.3	0.1	1.1
Prefab building, sanitary plumbing, lighting nes	12	105.7	105.7	105.7	-	-	-
Furniture, bedding, mattresses, cushions & others	26	108.8	108.6	110.3	-0.2	1.6	3.6
Travel goods, handbags & similar containers	54	106.4	106.4	107.9	-	1.4	4.8
Articles of apparel & clothing accessories	79	102.3	102.2	102.4	-	0.1	1.0
Footwear	24	104.9	104.8	105.0	-	0.2	1.4
Professional scientific & controlling instruments	275	102.9	102.3	102.0	-0.6	-0.3	-1.6
Photographic & optical goods nes; watches & clocks	106	107.7	107.8	108.1	0.1	0.2	3.0
Miscellaneous manufactured articles nes	283	112.9	112.4	112.4	-0.4	-	2.0

Figures may not sum to total due to rounding.

Table 2 Export Price Index

October 2021

Commodity section / division	Weights	Index (2018=100)			% Change		
					Sep 2021	Oct 2021	Oct 2021
		Aug 2021	Sep 2021	Oct 2021	Aug 2021	Sep 2021	Oct 2020
All Items	10,000	104.5	106.3	108.8	1.7	2.3	20.7
Non-oil Items	8,022	105.6	106.3	106.9	0.6	0.6	10.2
Food & Live Animals	236	93.5	95.9	95.6	2.6	-0.3	2.5
Dairy products & birds' eggs	5	44.2	44.1	44.6	-0.1	1.0	-39.4
Fish seafood & preparations	9	91.1	88.6	97.2	-2.7	9.6	13.1
Cereals & cereal preparations	7	97.3	97.2	97.5	-	0.3	1.3
Vegetables & fruit	8	96.2	98.0	97.0	1.9	-1.1	8.5
Sugar, sugar preparations & honey	3	109.5	113.9	114.9	4.0	0.9	11.5
Coffee, tea, cocoa, spices & manufactures	26	111.3	110.3	111.2	-1.0	0.9	7.9
Animal feeding stuff (excl unmilled cereals)	7	113.0	110.6	112.6	-2.1	1.8	0.8
Miscellaneous food preparations	171	90.9	94.5	93.4	4.0	-1.2	1.7
Beverages & Tobacco	103	107.2	105.7	105.6	-1.4	-0.1	5.2
Beverages	75	109.1	107.3	107.1	-1.7	-0.2	7.5
Tobacco & manufactures	28	102.2	101.6	101.9	-0.6	0.3	-0.9
Crude Materials (excl fuels)	91	103.1	102.7	104.5	-0.3	1.7	31.9
Crude rubber	35	92.1	84.5	84.8	-8.2	0.4	16.8
Pulp and waste paper	26	103.2	106.8	109.5	3.5	2.6	45.3
Metalliferous ores & metal scrap	26	119.1	123.8	126.9	3.9	2.5	43.2
Crude animal & vegetable materials nes	4	95.4	99.9	99.8	4.7	-0.1	-1.6
Mineral Fuels, Lubricants & Related Materials	1,978	100.1	106.5	116.4	6.4	9.3	87.4
Petroleum & products & related materials	1,978	100.1	106.5	116.4	6.4	9.3	87.4
Animal & Vegetable Oils, Fats & Waxes	5	120.6	124.6	126.7	3.4	1.7	29.9
Fixed vegetable fats & oils	5	120.6	124.6	126.7	3.4	1.7	29.9
Chemicals & Chemical Products	1,525	101.6	101.9	103.1	0.3	1.1	13.8
Organic chemicals	428	105.1	106.3	108.1	1.1	1.7	32.6
Inorganic chemicals	14	130.3	127.4	129.8	-2.2	1.8	17.1
Dyeing, tanning & colouring materials	37	100.1	99.4	100.1	-0.7	0.6	5.4
Medicinal & pharmaceutical products	250	97.8	97.6	97.1	-0.2	-0.5	-0.6
Essential oils & perfume; toilet cleaning products	232	100.6	101.2	101.4	0.7	0.1	2.3
Plastics in primary forms	355	99.6	99.6	102.0	-	2.4	20.8
Plastics in non-primary forms	29	114.4	114.1	113.5	-0.2	-0.5	5.6
Chemical materials & products nes	181	100.2	99.7	100.7	-0.5	1.0	2.5
Manufactured Goods	318	113.0	113.2	115.1	0.1	1.7	17.1
Rubber manufactures nes	22	98.2	97.8	97.9	-0.4	-	-1.5
Paper manufactures	41	99.6	100.5	98.8	0.9	-1.7	2.3
Textile manufactures	19	99.3	98.8	97.6	-0.5	-1.2	-3.9
Non-metal mineral manufactures nes	14	98.5	98.0	97.9	-0.5	-	-1.1
Iron & steel	66	119.1	119.4	122.9	0.2	3.0	29.5
Non-ferrous metals	67	143.4	144.3	151.4	0.7	4.9	51.8
Manufactures of metals nes	89	100.7	100.1	100.1	-0.5	-	0.8
Machinery & Transport Equipment	4,836	108.0	109.2	109.5	1.1	0.3	11.1
Power-generating machinery & equipment	418	100.4	99.8	100.2	-0.6	0.4	-0.1
Machinery specialized for particular industries	437	102.7	102.4	101.1	-0.2	-1.3	3.8
Metal working machinery	25	98.6	100.5	100.7	1.9	0.2	1.2
General industrial machinery	212	103.8	103.4	103.7	-0.4	0.3	1.7
Office machines & data-processing machines	467	101.2	101.7	100.0	0.5	-1.7	-0.1
Telecommunication apparatus	366	93.9	93.4	97.9	-0.6	4.8	13.1
Electrical machinery apparatus nes, electrical parts	2,814	113.3	115.4	115.8	1.9	0.4	16.7
Road vehicles	98	109.3	109.3	109.0	-	-0.2	3.8
Miscellaneous Manufactured Articles	908	100.3	99.0	99.7	-1.3	0.7	-1.9
Prefab building, sanitary plumbing, lighting nes	3	117.3	117.0	116.0	-0.3	-0.9	8.3
Furniture, bedding, mattresses, cushions & others	5	102.0	101.6	101.8	-0.4	0.2	-
Travel goods, handbags & similar containers	37	98.4	97.5	98.8	-0.9	1.3	4.5
Articles of apparel & clothing accessories	40	114.1	112.0	113.7	-1.8	1.5	1.8
Footwear	14	94.9	94.3	94.6	-0.6	0.3	0.8
Professional scientific & controlling instruments	365	90.3	89.9	91.3	-0.5	1.7	0.1
Photographic & optical goods nes; watches & clocks	98	104.9	105.0	105.0	0.1	-0.1	2.0
Miscellaneous manufactured articles nes	345	108.3	105.7	105.7	-2.5	-	-5.8

Figures may not sum to total due to rounding.

Table 3 Import Price Index

Section	All Items	Non-oil Items	Food & Live Animals	Beverages & Tobacco	Crude Materials	Mineral Fuels	Animal & Vegetable Oils, Fats & Waxes	Chemicals & Chemical Products	Manu- factured Goods	Machinery & Transport Equipment	Misc. Manu- factured Articles
Weights	10,000	7,410	247	112	84	2,590	27	888	505	4,690	857
Index (2018=100)											
2017	95.3	101.0	101.2	100.2	100.5	79.7	114.7	96.7	96.4	102.2	101.6
2018	100.0	100.0	100.0	100.0	100.0	100.0	100.0	100.0	100.0	100.0	100.0
2019	99.0	100.9	101.5	100.4	101.2	93.4	90.4	98.6	99.9	101.3	102.0
2020	92.0	101.3	102.9	97.9	101.8	65.6	103.1	97.4	99.8	101.3	106.0
2020											
Oct	91.0	100.4	101.4	95.1	101.8	64.1	108.4	97.3	99.4	100.1	105.8
Nov	91.8	100.2	101.8	95.0	101.5	67.5	113.3	97.4	100.2	99.8	105.4
Dec	93.4	100.2	102.2	96.2	101.5	74.0	120.0	97.6	100.8	99.7	104.8
2021											
Jan	95.2	100.6	103.5	107.2	100.6	80.0	124.7	98.3	101.6	99.5	105.4
Feb	97.8	100.7	104.5	107.0	99.3	89.4	129.8	99.4	103.3	99.3	105.9
Mar	99.8	100.9	103.5	107.1	102.0	96.5	138.2	101.0	104.9	99.2	105.2
Apr	99.3	101.0	103.4	106.9	102.7	94.3	143.3	102.0	105.9	98.9	105.5
May	99.8	100.8	103.9	107.4	103.0	96.8	151.3	102.8	107.4	98.2	105.7
Jun	101.8	101.2	105.0	107.2	105.4	103.7	148.4	102.8	109.6	98.4	106.1
Jul	104.0	102.5	105.6	107.6	105.6	108.4	152.1	104.8	112.1	99.6	106.9
Aug	104.0	103.3	106.1	107.4	107.0	106.1	154.3	105.5	112.6	100.6	107.2
Sep	105.9	103.3	105.8	107.0	106.4	113.4	155.6	105.5	113.6	100.5	106.9
Oct	109.1	103.4	106.6	104.3	106.4	125.6	162.8	106.5	115.0	100.3	107.0
Percentage Change over same period of previous year (%)											
2018	4.9	-1.0	-1.2	-0.2	-0.5	25.5	-12.8	3.4	3.7	-2.1	-1.6
2019	-1.0	0.9	1.5	0.4	1.2	-6.6	-9.6	-1.4	-0.1	1.3	2.0
2020	-7.0	0.3	1.4	-2.5	0.6	-29.8	14.0	-1.2	-0.2	-	3.8
2020											
Oct	-7.6	-0.5	-1.0	-5.0	1.0	-29.8	21.2	-0.9	-0.6	-1.0	2.4
Nov	-5.8	0.1	0.2	-4.7	0.8	-24.6	21.0	0.1	0.7	-0.4	2.9
Dec	-3.3	0.5	0.1	-3.3	0.4	-15.7	21.3	1.2	1.3	-0.1	2.6
2021											
Jan	-1.8	0.9	0.5	5.8	-1.0	-10.6	21.2	2.1	3.6	-0.2	3.0
Feb	0.7	-0.6	1.3	4.6	-3.3	5.0	27.7	1.2	3.4	-2.1	1.6
Mar	8.4	-2.2	0.2	3.0	-1.5	60.2	39.7	2.1	4.4	-4.2	-1.5
Apr	12.8	-2.6	-1.1	2.7	0.7	118.5	48.1	4.5	5.4	-5.2	-2.3
May	13.7	-1.3	-0.5	10.6	1.1	107.9	60.6	6.4	7.2	-4.1	-2.0
Jun	12.4	-0.5	2.0	10.5	3.9	76.3	53.6	6.5	10.1	-3.6	-0.6
Jul	12.7	0.9	2.2	14.5	3.6	64.4	55.1	6.9	12.4	-1.9	0.2
Aug	12.9	2.7	3.2	14.5	6.5	56.2	51.5	8.0	13.5	0.2	0.7
Sep	16.3	2.8	3.4	13.0	5.1	76.4	49.5	8.5	14.5	0.4	0.5
Oct	20.0	3.0	5.1	9.7	4.5	95.9	50.2	9.4	15.6	0.2	1.1

Table 4 Export Price Index

Section	All Items	Non-oil Items	Food & Live Animals	Beverages & Tobacco	Crude Materials	Mineral Fuels	Animal & Vegetable Oils, Fats & Waxes	Chemicals & Chemical Products	Manufactured Goods	Machinery & Transport Equipment	Misc. Manufactured Articles
Weights	10,000	8,022	236	103	91	1,978	5	1,525	318	4,836	908
Index (2018=100)											
2017	96.9	100.9	100.0	101.7	101.1	81.4	102.8	97.7	98.2	102.0	101.5
2018	100.0	100.0	100.0	100.0	100.0	100.0	100.0	100.0	100.0	100.0	100.0
2019	98.6	100.1	97.6	102.6	90.6	92.4	97.1	94.8	98.7	101.8	101.9
2020	91.7	98.6	94.7	103.4	81.0	63.7	101.9	91.1	97.9	100.6	103.2
2020											
Oct	90.1	97.0	93.3	100.5	79.2	62.1	97.5	90.6	98.3	98.5	101.7
Nov	89.7	96.0	94.0	100.8	79.3	64.5	97.6	91.4	99.1	96.7	100.6
Dec	90.5	95.6	92.1	101.2	81.3	69.9	101.6	92.0	100.8	95.9	99.7
2021											
Jan	91.7	95.7	92.9	102.7	85.4	75.8	106.5	93.0	101.9	95.5	99.6
Feb	94.4	96.8	93.5	105.8	89.3	84.5	109.1	94.6	104.1	96.8	99.0
Mar	96.3	98.0	94.8	102.9	91.1	89.3	112.4	97.8	105.7	97.5	99.3
Apr	98.3	100.4	96.1	105.3	94.2	89.6	116.0	99.4	107.4	100.7	98.9
May	98.6	100.3	95.9	104.6	97.2	92.0	117.8	100.0	111.1	100.0	99.3
Jun	102.2	103.5	94.6	104.5	96.5	96.9	117.9	100.3	110.6	105.3	99.5
Jul	104.0	104.7	95.1	106.1	102.8	101.1	120.5	102.0	112.5	106.4	99.9
Aug	104.5	105.6	93.5	107.2	103.1	100.1	120.6	101.6	113.0	108.0	100.3
Sep	106.3	106.3	95.9	105.7	102.7	106.5	124.6	101.9	113.2	109.2	99.0
Oct	108.8	106.9	95.6	105.6	104.5	116.4	126.7	103.1	115.1	109.5	99.7
Percentage Change over same period of previous year (%)											
2018	3.2	-0.9	-	-1.7	-1.1	22.9	-2.7	2.3	1.9	-1.9	-1.5
2019	-1.4	0.1	-2.4	2.6	-9.4	-7.6	-2.9	-5.2	-1.3	1.8	1.9
2020	-7.0	-1.5	-3.0	0.8	-10.6	-31.0	4.9	-4.0	-0.8	-1.2	1.3
2020											
Oct	-7.9	-3.0	-4.1	-2.8	-7.3	-30.5	3.4	-2.9	-0.3	-3.4	-1.0
Nov	-6.6	-3.0	-3.1	-1.6	-3.6	-23.5	2.8	-1.5	1.2	-4.1	-0.9
Dec	-5.9	-3.4	-3.8	-1.6	-0.4	-18.1	3.8	0.2	3.3	-5.2	-1.6
2021											
Jan	-4.5	-2.5	-2.1	-0.8	3.4	-13.8	6.8	2.2	5.1	-4.7	-1.1
Feb	-1.9	-3.0	-4.1	0.3	8.6	4.0	3.5	1.8	6.8	-5.1	-3.6
Mar	3.6	-3.2	-1.3	-3.1	10.5	50.3	1.5	4.8	8.6	-6.0	-5.9
Apr	9.6	-0.7	3.3	-2.0	14.9	106.1	8.9	7.8	11.2	-3.1	-6.4
May	9.7	-0.5	1.4	-1.9	16.5	100.7	11.8	10.4	14.7	-3.7	-5.8
Jun	12.4	4.4	0.8	0.7	16.4	67.9	15.0	11.6	14.0	3.6	-4.4
Jul	12.9	5.9	-	3.9	29.9	57.1	21.6	13.9	14.8	4.9	-4.0
Aug	14.2	7.9	-1.2	5.1	32.7	52.2	22.5	13.5	15.1	8.2	-3.7
Sep	17.4	9.0	-1.1	4.5	29.7	70.3	26.7	13.7	15.1	10.2	-4.5
Oct	20.7	10.2	2.5	5.2	31.9	87.4	29.9	13.8	17.1	11.1	-1.9

NOTATIONS

- nes not elsewhere specified
- nil or negligible

NOTES

The Import and Export Price Indices report contains statistics that are the most recent available at the time of its preparation.

Some statistics, particularly those for the most recent time periods, are provisional and may be subject to revision in later issues.