



# Singapore Manufactured Products & Domestic Supply Price Indices December 2024

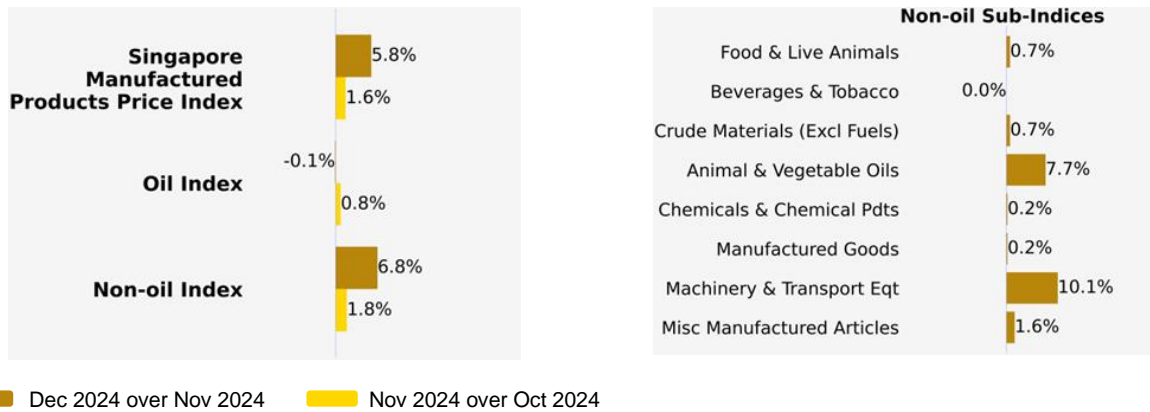
**SINGAPORE MANUFACTURED PRODUCTS &  
DOMESTIC SUPPLY PRICE INDICES, December 2024  
ISSN 2591-7447**

**© Department of Statistics, Ministry of Trade & Industry, Republic of Singapore**

Reproducing or quoting any part of this publication is permitted, provided this publication is accredited as the source. Please refer to the SingStat Website Terms of Use (<https://www.singstat.gov.sg/terms-of-use>) for more details on the conditions of use of this publication.

# Singapore Manufactured Products Price Index (2023 = 100) December 2024

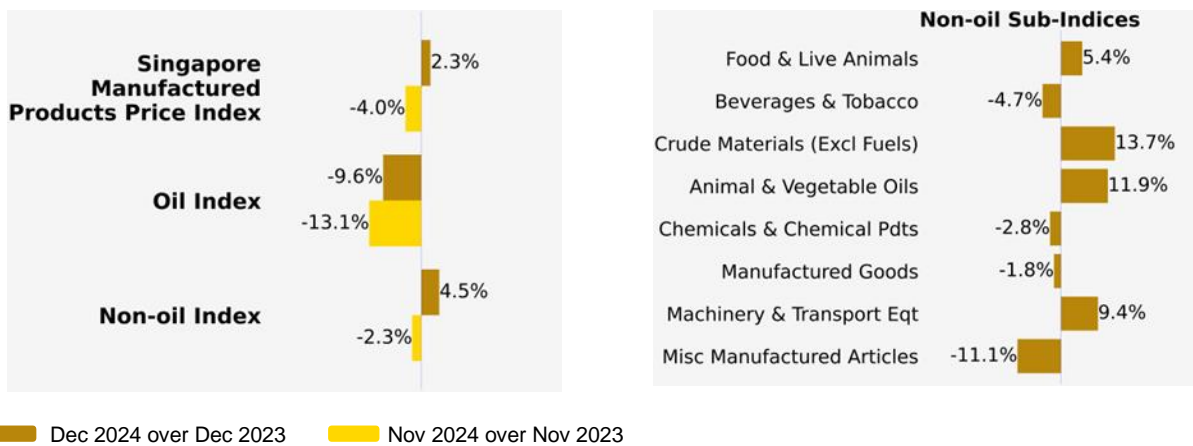
## Month-on-Month Change



The Singapore Manufactured Products Price Index rose 5.8% in December 2024, following the 1.6% increase in November 2024. The Oil index fell 0.1%, after the 0.8% increase in the previous month. The Non-oil index rose 6.8% in December 2024, after the 1.8% increase in November 2024.

For the Non-oil index, the increase was mainly driven by the Machinery & Transport Equipment index, attributed to higher prices of electrical machinery apparatus, as well as increases in the Miscellaneous Manufactured Articles, Chemicals & Chemical Products, Food & Live Animals, Animal & Vegetable Oils, Manufactured Goods, and Crude Materials indices.

## Year-on-Year Change



The Singapore Manufactured Products Price Index rose 2.3% in December 2024 from a year ago, in contrast to the 4.0% decline in November 2024. The Oil index decreased 9.6% while the Non-oil index rose 4.5%.

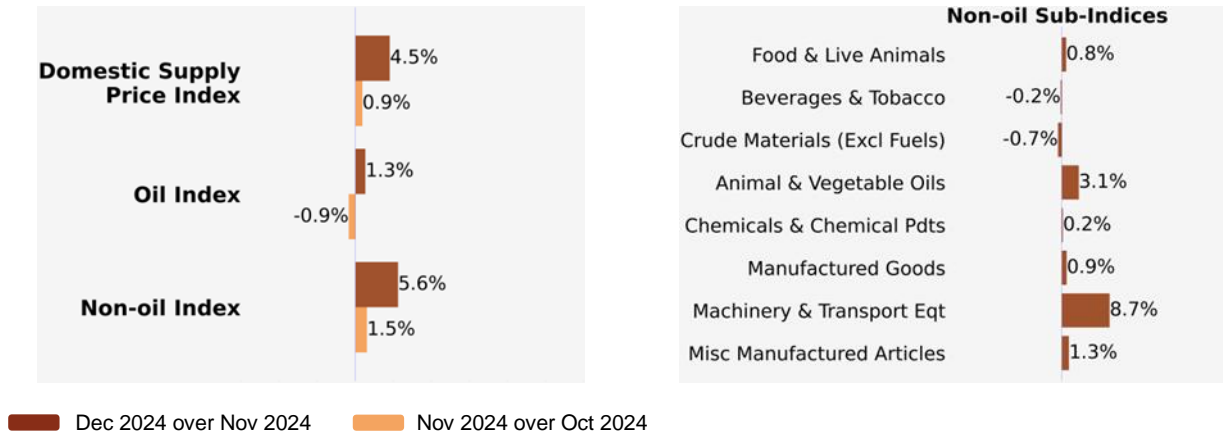
The increase in the Non-oil index was due to the Machinery & Transport Equipment index, mainly reflecting higher prices of electrical machinery apparatus, as well as increases in the Food & Live Animals, Crude Materials, and Animal & Vegetable Oils indices. The increases were partially moderated by declines in the Miscellaneous Manufactured Articles, Chemicals & Chemical Products, Manufactured Goods and Beverages & Tobacco indices.

## Annual Change

The Singapore Manufactured Products Price Index fell 0.5% in 2024 over 2023, following the 4.5% decline in 2023. Among the Non-oil sub-indices, the decreases were largely contributed by the Miscellaneous Manufactured Articles index, attributed to lower prices of professional and scientific instruments, as well as decreases in the Chemicals & Chemical Products, Manufactured Goods, Animal & Vegetable Oils and Beverages & Tobacco indices. The decreases were partially moderated by increases in the Machinery & Transport Equipment, Food & Live Animals and Crude Materials indices.

# Domestic Supply Price Index (2023 = 100) December 2024

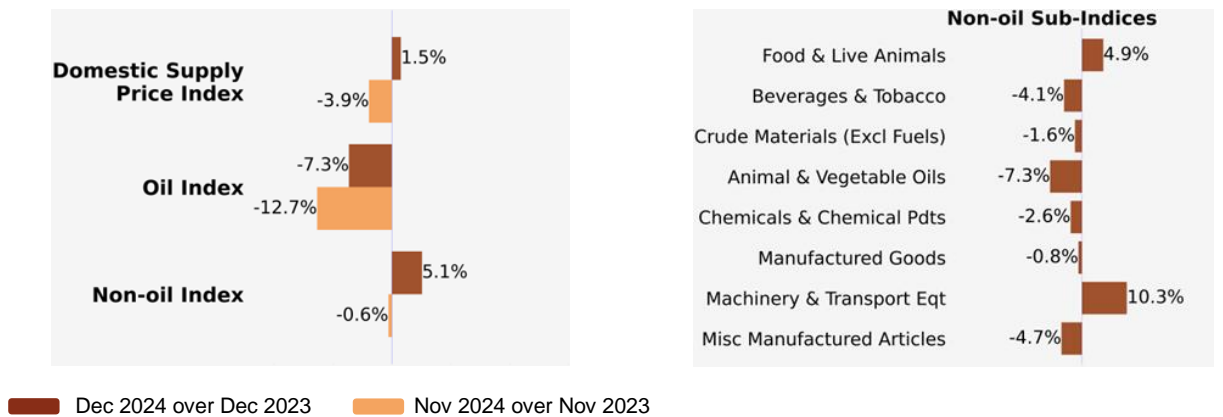
## Month-on-Month Change



The Domestic Supply Price Index rose 4.5% in December 2024, following the 0.9% increase in November 2024. The Oil index gained 1.3%, reversing the 0.9% decrease in the previous month. The Non-oil index rose 5.6% in December 2024, after the 1.5% increase in November 2024.

The increase in the Non-oil index was primarily led by the Machinery & Transport Equipment index, due to higher prices of electrical machinery apparatus, as well as increases in the Miscellaneous Manufactured Articles, Manufactured Goods, Food & Live Animals, Chemicals & Chemical Products and Animal & Vegetable Oils indices. The increases were partially offset by decreases in the Crude Materials and Beverages & Tobacco indices.

## Year-on-Year Change



The Domestic Supply Price Index rose 1.5% in December 2024 from a year ago, reversing the 3.9% decrease in November 2024. The Oil index dipped 7.3% while the Non-oil index gained 5.1%.

Among the Non-oil indices, the gains were largely contributed by the Machinery & Transport Equipment index, due to higher prices of electrical machinery apparatus, as well as increases in the Food & Live Animals index. The increases were partially offset by declines in the Miscellaneous Manufactured Articles, Chemicals & Chemical Products, Animal & Vegetable Oils, Manufactured Goods, Crude Materials, and Beverages & Tobacco indices.

## Annual Change

The Domestic Supply Price Index fell 1.3% in 2024 over 2023, extending the 6.7% decline in 2023. Among the Non-oil sub-indices, the decreases were due to the Chemicals & Chemical Products index, attributed to lower prices of chemical materials and products, as well as decreases in the Miscellaneous Manufactured Articles, Manufactured Goods, Animal & Vegetable Oils, Crude Materials and Beverages & Tobacco indices. The decreases were partially offset by increases in the Machinery & Transport Equipment and Food & Live Animals indices.

## Technical Note

The **Singapore Manufactured Products Price Index (SMPPI)** monitors price changes of locally manufactured commodities. The weights of the index are derived from the distribution of local production by commodity in 2023. Ex-factory prices are obtained from principal manufacturers of the items concerned.

The **Domestic Supply Price Index (DSPI)** is designed to measure the changes in the price level of either goods manufactured locally or imported, which are retained for use in the domestic economy by the government, business or household sectors. For imported products, the prices refer to those paid by importers in bringing the goods into Singapore, commonly referred to as c.i.f. prices. In the case of Singapore manufactured products, the quotations used are ex-factory prices. The weight for each commodity item is proportional to the value of its total supply or availability in the domestic market in 2023.

### Index Formula

The 2023-based series is compiled using the 'modified Laspeyres' formula where the weight reference period of 2022 preceded the price reference period of 2023. The geometric mean formula has been adopted in the computation of unweighted elementary aggregate price indices. The arithmetic mean formula is applied in compiling indices at higher levels of aggregation where weights of specific sub-indices are available.

### Measurement of Changes in Price Indices

*Change over previous month* compares the index of the month with that of the preceding month. Such comparisons measure the change in the price index between two consecutive months. They serve as useful short-term indicators of the price movements.

*Change over same period of previous year* measures change in the index over a twelve-month period. Such comparisons compare the movement in the price index between similar months in two consecutive years.

### Linking the Old 2018-Based Price Index Series to the New 2023-Based Price Index Series

The SMPPI and DSPI have been rebased from base year 2018 to base year 2023. To facilitate comparison of the historical price indices across base years, the old 2018-based series are linked to the new 2023-based series by re-scaling them via a Linked Coefficient. The Linked Coefficient is the ratio of the annual 2023-based index in 2023 to the annual 2018-based index in 2023.

Example: Linking the old Iron & Steel Index series for SMPPI prior to 2023, to the 2023-based Iron & Steel Index (2023=100)

1) Calculate the linked coefficient

Year	Iron & Steel Index (2018=100)	Iron & Steel Index (2023=100)	Linked Coefficient
2023	135.6	100.0	$100.0 \div 135.6 = 0.737$

2) Re-scaling the old series to the 2023-based series using the Linked Coefficient

Year	Month	Iron & Steel Index (2018=100)	Iron & Steel Index (2023=100)
2021	Dec	125.6	$125.6 \times 0.737 = 92.6$
2022	Jan	127.2	$127.2 \times 0.737 = 93.7$

### Rescaling the 2023-Based Index Series to Previous Years

To continue the old 2018-based index series going forward in time, re-scale the new 2023-based index series to the old base year 2018 level, via a Rescaling Coefficient. The Rescaling Coefficient is the ratio of the annual 2023-based index in 2023 to the annual 2023-based index in 2018.

Example: Rescaling the new 2023-based Iron & Steel Index series for SMPPI to the 2018-based Iron & Steel Index (2018=100)

1) Calculate the rescaling coefficient

Year	Annual Iron & Steel Index in 2023	Annual Iron & Steel Index in 2018	Rescaling Coefficient
2023	100.0	73.7	$100.0 \div 73.7 = 1.357$

2) Re-scaling the new series to the 2018-based series using the Rescaling Coefficient

Year	Month	Iron & Steel Index (2023=100)	Iron & Steel Index (2018=100)
2024	Jan	100.0	$100.0 \times 1.357 = 135.7$
2024	Feb	100.6	$100.6 \times 1.357 = 136.5$

### Index Revision

The indices may be revised when late returns and amendments received from respondents are incorporated.

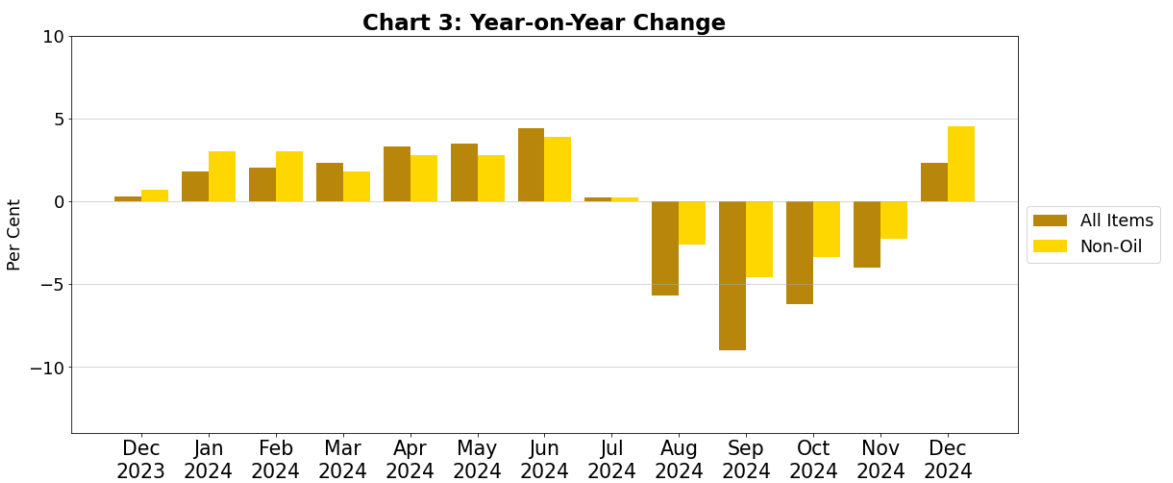
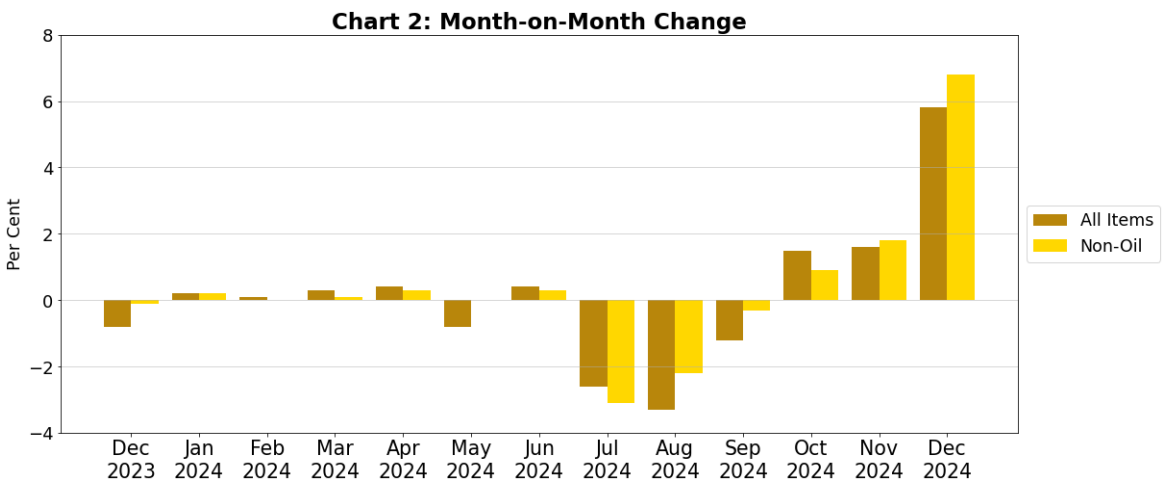
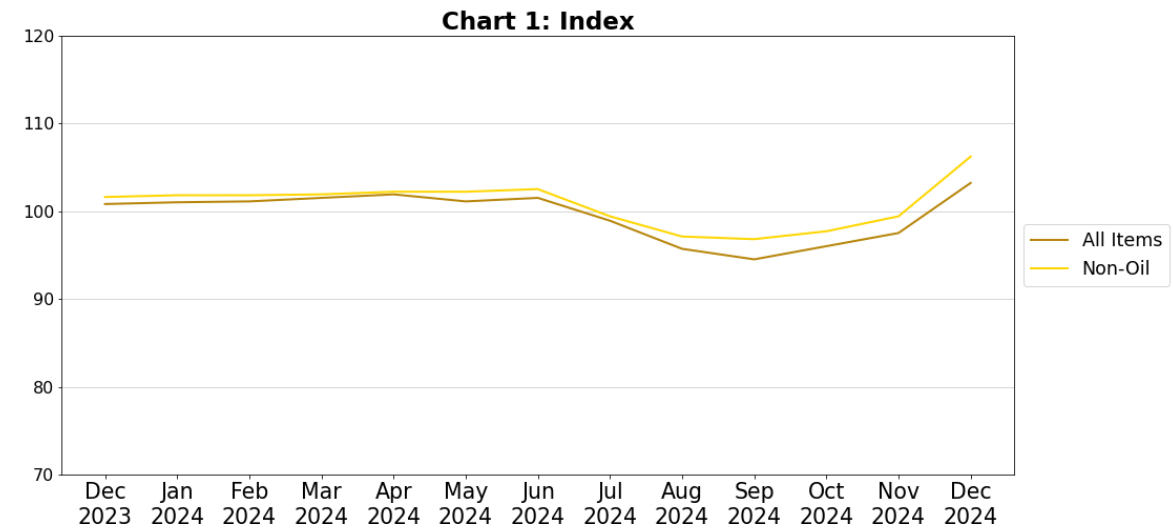
### Dissemination of Data

The Singapore Manufactured Products and Domestic Supply Price Indices are available on the SingStat Website ([www.singstat.gov.sg/tablebuilder](http://www.singstat.gov.sg/tablebuilder)). Excel tables for this month's report are available at <https://www.singstat.gov.sg/publications/economy/producer-price-indices> or through the QR code below:



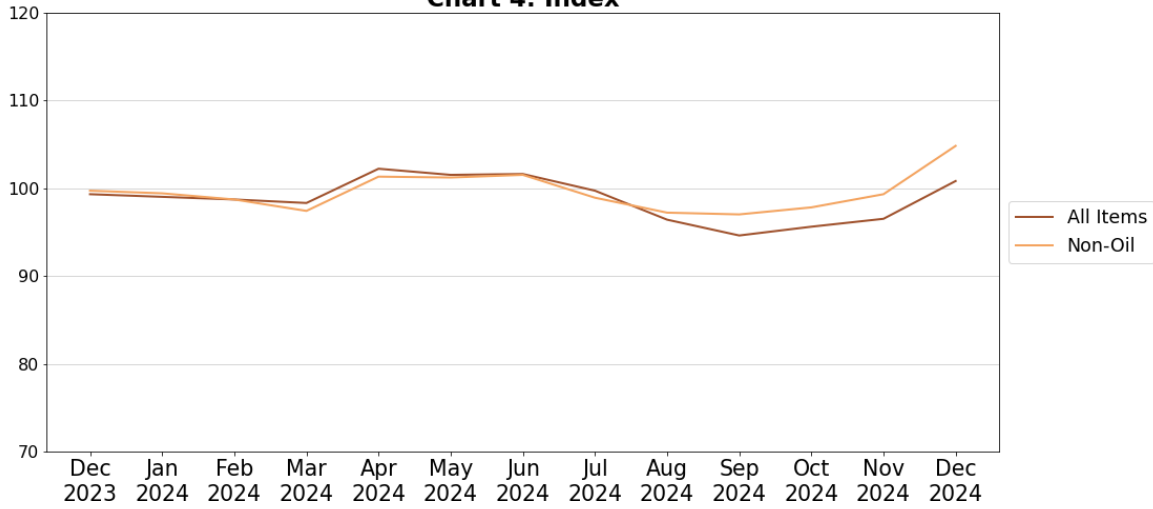
# Singapore Manufactured Products Price Index (2023 = 100)

## December 2024

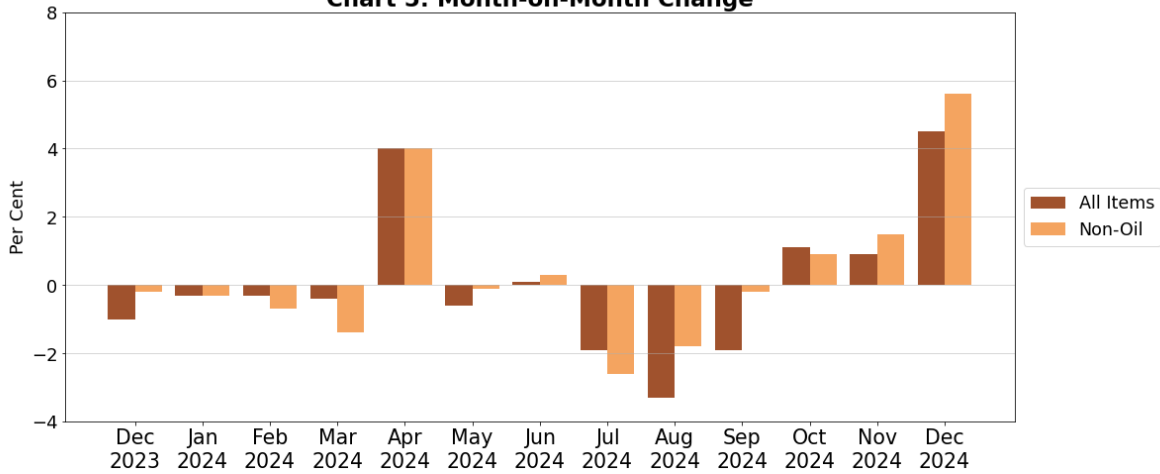


# Domestic Supply Price Index (2023 = 100) December 2024

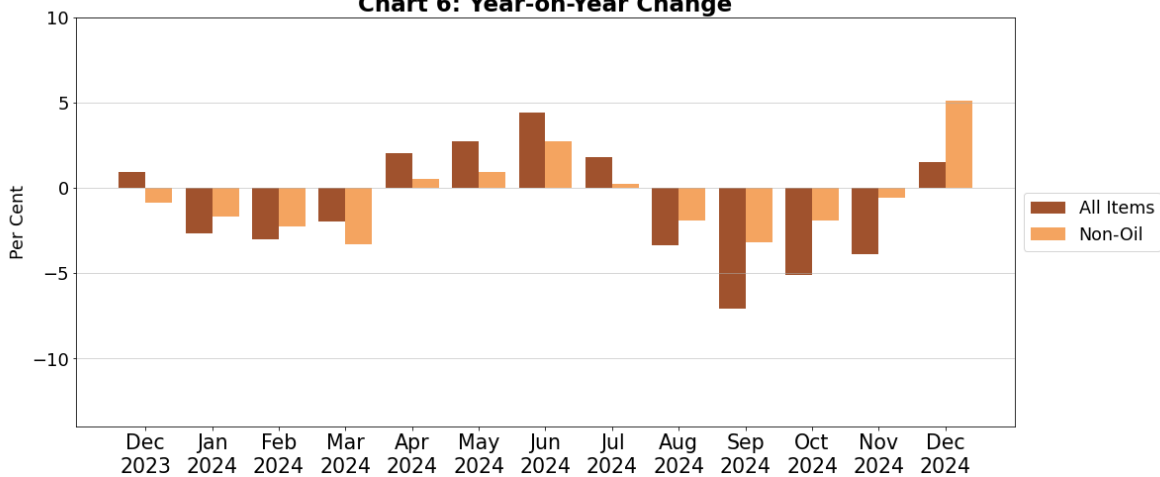
**Chart 4: Index**



**Chart 5: Month-on-Month Change**



**Chart 6: Year-on-Year Change**





**Table 1 Singapore Manufactured Products Price Index**

**December 2024**

Commodity section / division	Weights	Index (2023=100)			% Change		
		Oct 2024	Nov 2024	Dec 2024	Nov 2024	Dec 2024	Dec 2024
					Oct 2024	Nov 2024	Dec 2023
<b>All Items</b>	<b>10,000</b>	<b>96.0</b>	<b>97.5</b>	<b>103.2</b>	<b>1.6</b>	<b>5.8</b>	<b>2.3</b>
<b>Non-oil Items</b>	<b>8,369</b>	<b>97.7</b>	<b>99.4</b>	<b>106.2</b>	<b>1.8</b>	<b>6.8</b>	<b>4.5</b>
Food & Live Animals	220	103.5	104.6	105.4	1.1	0.7	5.4
Meat & meat preparations	22	98.8	98.8	100.3	-	1.5	2.4
Dairy products & birds' eggs	11	109.1	111.3	111.1	2.0	-0.2	7.4
Fish seafood & preparations	8	104.2	104.2	104.2	-	-	-
Cereals & cereal preparations	34	101.0	101.0	101.0	-	-	-0.2
Vegetables & fruit	2	100.0	100.0	100.0	-	-	-
Coffee, tea, cocoa, spices & manufactures	17	146.0	150.0	151.5	2.8	1.0	54.0
Animal feeding stuff (excl unmilled cereals)	9	97.3	99.1	102.5	1.9	3.5	7.7
Miscellaneous food preparations	116	98.9	100.1	100.8	1.2	0.7	0.8
Beverages & Tobacco	14	95.4	95.4	95.4	-	-	-4.7
Beverages	14	95.4	95.4	95.4	-	-	-4.7
Crude Materials (excl fuels)	40	106.2	107.7	108.4	1.4	0.7	13.7
Crude rubber	34	107.1	108.4	109.2	1.2	0.7	15.5
Cork & wood	2	102.3	102.3	102.3	-	-	-
Crude fertilizers & minerals	2	99.2	98.9	98.8	-0.2	-0.2	-0.9
Metalliferous ores & metal scrap	3	101.5	107.8	108.9	6.2	1.0	9.5
Mineral Fuels, Lubricants & Related Materials	1,631	87.2	87.9	87.8	0.8	-0.1	-9.6
Petroleum & products & related materials	1,617	87.0	87.7	87.7	0.8	-	-9.7
Gas	14	108.7	109.6	100.2	0.8	-8.6	-5.1
Animal & Vegetable Oils, Fats & Waxes	9	94.1	95.2	102.6	1.2	7.7	11.9
Fixed vegetable fats & oils	9	94.1	95.2	102.6	1.2	7.7	11.9
Chemicals & Chemical Products	1,795	94.1	94.9	95.2	0.8	0.2	-2.8
Organic chemicals	767	92.4	93.8	94.5	1.4	0.7	-3.6
Inorganic chemicals	45	105.2	105.5	102.0	0.2	-3.3	-0.2
Dyeing, tanning & colouring materials	15	100.4	101.8	100.4	1.4	-1.4	-1.0
Medicinal & pharmaceutical products	253	100.5	101.0	101.3	0.5	0.3	-2.7
Essential oils & perfume; toilet cleaning products	141	97.9	98.4	98.6	0.6	0.2	-1.5
Plastics in primary forms	272	96.9	97.1	96.7	0.2	-0.4	4.4
Plastics in non-primary forms	18	100.1	100.1	100.1	-	-	0.2
Chemical materials & products nes	284	86.1	86.5	86.7	0.4	0.3	-9.0
Manufactured Goods	255	97.0	97.0	97.2	0.1	0.2	-1.8
Rubber manufactures nes	11	96.7	96.2	97.6	-0.6	1.5	-3.0
Wood & cork manufactures (excl furniture)	7	87.9	88.0	88.1	0.1	0.1	-8.5
Paper manufactures	31	95.3	95.0	95.6	-0.4	0.6	-0.1
Textile Yarn Fabrics Made-Up Articles Nes	7	100.4	100.3	89.2	-0.1	-11.1	-10.6
Non-metal mineral manufactures nes	45	96.4	96.7	97.0	0.3	0.3	-2.8
Iron & steel	48	94.8	97.3	97.6	2.6	0.4	-2.9
Non-ferrous metals	17	101.4	102.9	103.3	1.5	0.4	5.5
Manufactures of metals nes	88	98.7	97.3	97.9	-1.4	0.6	-1.2
Machinery & Transport Equipment	5,266	99.6	102.4	112.8	2.8	10.1	9.4
Machinery specialized for particular industries	661	97.0	97.5	98.2	0.5	0.8	-1.9
Metal working machinery	17	96.6	98.7	99.7	2.1	1.0	0.4
General industrial machinery	65	101.9	102.3	102.6	0.4	0.3	1.2
Office machines & data-processing machines	589	102.1	102.2	100.4	0.1	-1.7	-0.8
Telecommunication apparatus	79	99.7	101.5	102.5	1.8	1.0	3.2
Electrical machinery apparatus nes, electrical parts	3,856	99.6	103.3	117.6	3.7	13.8	13.0
Miscellaneous Manufactured Articles	772	91.4	88.6	90.0	-3.1	1.6	-11.1
Furniture, bedding, mattresses, cushions & others	16	104.4	104.1	104.2	-0.3	0.1	5.0
Travel goods, handbags & similar containers	0	100.0	100.0	100.0	-	-	-
Professional scientific & controlling instruments	455	86.0	81.4	82.1	-5.3	0.9	-17.8
Photographic & optical goods nes; watches & clocks	42	96.9	98.4	99.3	1.6	0.9	1.1
Miscellaneous manufactured articles nes	259	99.3	98.8	101.4	-0.5	2.6	-2.7

Figures may not sum to total due to rounding.

**Table 2 Domestic Supply Price Index**

**December 2024**

Commodity section / division	Weights	Index (2023=100)			% Change		
		Oct 2024	Nov 2024	Dec 2024	Nov 2024	Dec 2024	Dec 2024
					Oct 2024	Nov 2024	Dec 2023
<b>All Items</b>	<b>10,000</b>	<b>95.6</b>	<b>96.5</b>	<b>100.8</b>	<b>0.9</b>	<b>4.5</b>	<b>1.5</b>
<b>Non-oil Items</b>	<b>7,196</b>	<b>97.8</b>	<b>99.3</b>	<b>104.8</b>	<b>1.5</b>	<b>5.6</b>	<b>5.1</b>
Food & Live Animals	274	103.3	104.0	104.8	0.6	0.8	4.9
Live animals	6	89.2	86.3	87.9	-3.3	1.9	0.1
Meat & meat preparations	45	101.5	101.6	102.3	0.1	0.8	2.8
Dairy products & birds' eggs	34	98.2	99.0	100.1	0.8	1.1	4.1
Fish seafood & preparations	30	97.8	98.3	99.1	0.5	0.8	-0.9
Cereals & cereal preparations	42	100.3	101.0	101.2	0.6	0.2	0.9
Vegetables & fruit	37	96.5	97.0	98.4	0.5	1.4	-0.9
Sugar, sugar preparations & honey	7	98.2	98.3	98.9	0.1	0.6	-5.8
Coffee, tea, cocoa, spices & manufactures	22	153.3	155.2	155.7	1.2	0.3	45.5
Animal feeding stuff (excl unmilled cereals)	7	100.7	103.9	105.6	3.2	1.6	6.4
Miscellaneous food preparations	44	99.9	100.7	101.5	0.9	0.8	1.8
Beverages & Tobacco	26	97.1	96.5	96.3	-0.6	-0.2	-4.1
Beverages	23	97.1	96.6	96.3	-0.5	-0.3	-3.9
Tobacco & manufactures	3	96.9	95.9	96.3	-1.0	0.4	-5.4
Crude Materials (excl fuels)	75	98.0	96.8	96.1	-1.2	-0.7	-1.6
Hides Skins & Furskins	1	100.0	100.0	100.0	-	-	-
Oil seeds & oleaginous fruits	1	94.3	96.2	96.8	2.0	0.6	-1.5
Crude rubber	26	106.6	107.9	108.7	1.3	0.7	13.6
Cork & wood	3	96.8	97.3	98.8	0.5	1.5	1.2
Crude fertilizers & minerals	18	112.8	113.1	111.2	0.3	-1.7	13.4
Metalliferous ores & metal scrap	21	74.9	67.9	66.0	-9.3	-2.8	-33.6
Crude animal & vegetable materials nes	6	97.0	99.0	99.0	2.0	0.1	-0.2
Mineral Fuels, Lubricants & Related Materials	2,804	90.1	89.3	90.5	-0.9	1.3	-7.3
Petroleum & products & related materials	2,624	90.0	88.8	90.0	-1.3	1.4	-7.9
Gas	180	91.7	96.1	97.1	4.8	1.0	0.7
Animal & Vegetable Oils, Fats & Waxes	67	92.2	87.8	90.6	-4.7	3.1	-7.3
Fixed vegetable fats & oils	21	92.8	94.1	100.9	1.4	7.3	8.8
Inedible Mixtures Of Animal Or Vegetable Fats Or Oils	46	91.9	84.9	85.8	-7.6	1.0	-14.0
Chemicals & Chemical Products	1,225	94.6	95.2	95.4	0.6	0.2	-2.6
Organic chemicals	573	93.0	94.3	94.5	1.4	0.2	-3.7
Inorganic chemicals	56	100.2	101.1	99.0	0.9	-2.1	-0.5
Dyeing, tanning & colouring materials	42	96.9	98.5	98.8	1.6	0.3	-
Medicinal & pharmaceutical products	100	103.0	103.5	103.7	0.4	0.3	1.7
Essential oils & perfume; toilet cleaning products	77	96.6	97.1	97.1	0.6	-	-1.6
Plastics in primary forms	141	95.5	95.3	94.8	-0.2	-0.5	0.6
Plastics in non-primary forms	33	96.1	96.0	96.9	-0.1	0.9	-2.7
Chemical materials & products nes	204	91.4	90.6	91.7	-0.9	1.2	-6.5
Manufactured Goods	416	95.9	96.4	97.3	0.6	0.9	-0.8
Rubber manufactures nes	7	98.0	98.9	98.8	0.9	-0.1	2.9
Wood & cork manufactures (excl furniture)	14	89.7	90.7	90.9	1.1	0.2	-3.7
Paper manufactures	34	94.2	95.5	96.0	1.3	0.6	-0.6
Textile manufactures	13	97.1	97.7	97.3	0.6	-0.4	-0.8
Non-metal mineral manufactures nes	83	97.4	97.3	99.1	-0.1	1.8	0.8
Iron & steel	97	91.5	92.8	93.4	1.4	0.7	-4.5
Non-ferrous metals	47	102.6	104.0	104.4	1.3	0.5	7.4
Manufactures of metals nes	120	96.6	96.5	97.3	-	0.8	-2.2
Machinery & Transport Equipment	4,316	99.1	101.6	110.5	2.5	8.7	10.3
Power-generating machinery & equipment	120	106.3	108.8	108.9	2.3	0.1	6.0
Machinery specialized for particular industries	415	96.0	97.2	97.8	1.2	0.7	-1.8
Metal working machinery	18	90.0	91.7	91.2	1.9	-0.6	-8.3
General industrial machinery	156	97.9	98.8	100.0	0.9	1.2	2.9
Office machines & data-processing machines	495	101.6	101.6	100.2	-0.1	-1.3	0.3
Telecommunication apparatus	115	97.8	98.2	98.8	0.4	0.6	-7.2
Electrical machinery apparatus nes, electrical parts	2,950	99.0	102.4	115.3	3.4	12.7	15.4
Road vehicles	47	99.8	99.0	99.5	-0.8	0.5	-0.1
Miscellaneous Manufactured Articles	797	94.9	93.7	94.9	-1.3	1.3	-4.7
Prefab building, sanitary plumbing, lighting nes	6	94.2	96.3	97.1	2.3	0.8	-2.6
Furniture, bedding, mattresses, cushions & others	30	101.2	101.1	101.5	-0.2	0.4	3.0
Travel goods, handbags & similar containers	20	105.9	105.9	105.9	-	-	6.4
Articles of apparel & clothing accessories	27	88.5	88.5	89.1	-	0.7	2.2
Footwear	6	96.8	95.9	100.6	-0.9	4.9	1.3
Professional scientific & controlling instruments	387	87.0	84.3	84.9	-3.1	0.7	-14.0
Photographic & optical goods nes; watches & clocks	59	102.4	103.4	103.5	1.0	0.2	2.7
Miscellaneous manufactured articles nes	261	104.2	104.3	106.7	0.1	2.3	4.0

Figures may not sum to total due to rounding.

**Table 3 Singapore Manufactured Products Price Index**

Section	All Items	Non-oil Items	Food & Live Animals	Beverages & Tobacco	Crude Materials	Mineral Fuels	Animal & Vegetable Oils, Fats & Waxes	Chemicals & Chemical Products	Manufactured Goods	Machinery & Transport Equipment	Misc. Manufactured Articles
Weights	<b>10,000</b>	<b>8,369</b>	220	14	40	1,631	9	1,795	255	5,266	772
<b>Index (2023=100)</b>											
2021	<b>91.1</b>	<b>93.6</b>	88.5	91.8	85.5	77.4	102.0	100.7	95.4	90.5	97.5
2022	<b>104.7</b>	<b>102.8</b>	96.0	95.6	102.2	115.0	128.3	108.4	102.2	101.5	100.4
2023	<b>100.0</b>	<b>100.0</b>	100.0	100.0	100.0	100.0	100.0	100.0	100.0	100.0	100.0
2024	<b>99.5</b>	<b>100.7</b>	102.8	97.2	103.3	93.1	94.1	97.5	98.3	102.9	93.4
2023											
Dec	<b>100.8</b>	<b>101.6</b>	100.0	100.1	95.4	97.2	91.6	97.9	99.0	103.1	101.2
2024											
Jan	<b>101.0</b>	<b>101.8</b>	99.7	98.5	98.9	97.1	93.1	97.3	99.3	104.0	99.2
Feb	<b>101.1</b>	<b>101.8</b>	101.5	98.5	100.3	97.7	93.6	99.4	99.0	103.4	97.9
Mar	<b>101.5</b>	<b>101.9</b>	101.1	98.5	99.2	99.4	91.5	100.7	98.7	103.3	96.5
Apr	<b>101.9</b>	<b>102.2</b>	103.0	98.5	102.5	100.5	91.6	100.9	99.1	103.7	95.6
May	<b>101.1</b>	<b>102.2</b>	103.1	98.5	100.6	95.7	91.9	100.2	99.3	104.1	94.5
Jun	<b>101.5</b>	<b>102.5</b>	104.5	98.5	102.2	96.5	95.0	98.7	98.7	105.3	92.9
Jul	<b>98.9</b>	<b>99.4</b>	102.6	98.5	104.4	96.6	94.4	98.3	98.8	100.6	92.7
Aug	<b>95.7</b>	<b>97.1</b>	102.5	95.4	104.4	88.2	94.2	96.7	98.1	97.9	90.9
Sep	<b>94.5</b>	<b>96.8</b>	102.0	95.4	105.1	82.8	92.2	94.0	96.9	98.5	90.4
Oct	<b>96.0</b>	<b>97.7</b>	103.5	95.4	106.2	87.2	94.1	94.1	97.0	99.6	91.4
Nov	<b>97.5</b>	<b>99.4</b>	104.6	95.4	107.7	87.9	95.2	94.9	97.0	102.4	88.6
Dec	<b>103.2</b>	<b>106.2</b>	105.4	95.4	108.4	87.8	102.6	95.2	97.2	112.8	90.0
<b>Percentage Change over same period of previous year (%)</b>											
2022	<b>14.9</b>	<b>9.9</b>	8.4	4.1	19.5	48.5	25.8	7.7	7.1	12.1	3.0
2023	<b>-4.5</b>	<b>-2.7</b>	4.2	4.5	-2.2	-13.0	-22.1	-7.7	-2.1	-1.5	-0.4
2024	<b>-0.5</b>	<b>0.7</b>	2.8	-2.8	3.3	-6.9	-5.9	-2.5	-1.8	2.9	-6.6
2023											
Dec	<b>0.3</b>	<b>0.7</b>	0.5	4.0	-12.0	-1.2	-13.0	-4.8	-1.9	2.7	1.5
2024											
Jan	<b>1.8</b>	<b>3.0</b>	0.3	-1.9	-2.1	-3.7	-8.5	-2.9	-0.9	5.6	1.6
Feb	<b>2.0</b>	<b>3.0</b>	2.0	-1.9	-0.7	-3.1	-7.9	-0.9	-1.2	5.1	0.3
Mar	<b>2.3</b>	<b>1.8</b>	1.5	-1.3	-2.9	4.6	-10.1	-2.6	-1.9	4.5	-3.4
Apr	<b>3.3</b>	<b>2.8</b>	3.7	-1.3	-0.3	6.1	-12.5	-1.1	-1.4	5.2	-2.2
May	<b>3.5</b>	<b>2.8</b>	3.0	-1.3	-3.7	7.7	-11.9	-0.3	-1.1	5.1	-4.0
Jun	<b>4.4</b>	<b>3.9</b>	4.7	-1.3	-2.9	7.3	-7.9	1.4	-1.3	6.7	-7.3
Jul	<b>0.2</b>	<b>0.2</b>	3.2	-1.3	7.0	-	-6.8	2.1	-0.5	0.8	-8.4
Aug	<b>-5.7</b>	<b>-2.6</b>	2.2	-4.4	5.6	-20.0	-7.1	-2.5	-2.0	-1.8	-10.1
Sep	<b>-9.0</b>	<b>-4.6</b>	1.3	-4.7	4.7	-28.8	-5.8	-7.0	-3.2	-3.1	-11.7
Oct	<b>-6.2</b>	<b>-3.4</b>	2.2	-4.7	10.8	-19.6	-4.3	-7.4	-3.0	-1.4	-10.6
Nov	<b>-4.0</b>	<b>-2.3</b>	4.1	-4.7	12.9	-13.1	3.2	-4.9	-2.6	-0.4	-11.8
Dec	<b>2.3</b>	<b>4.5</b>	5.4	-4.7	13.7	-9.6	11.9	-2.8	-1.8	9.4	-11.1

**Table 4 Domestic Supply Price Index**

Section	All Items	Non-oil Items	Food & Live Animals	Beverages & Tobacco	Crude Materials	Mineral Fuels	Animal & Vegetable Oils, Fats & Waxes	Chemicals & Chemical Products	Manufactured Goods	Machinery & Transport Equipment	Misc. Manufactured Articles
Weights	<b>10,000</b>	<b>7,196</b>	274	26	75	2,804	67	1,225	416	4,316	797
<b>Index (2023=100)</b>											
2021	<b>90.4</b>	<b>92.8</b>	91.0	88.0	88.9	84.6	107.7	97.1	96.8	90.9	95.2
2022	<b>107.2</b>	<b>102.1</b>	98.5	96.4	99.2	119.2	126.9	106.0	104.0	101.6	99.1
2023	<b>100.0</b>	<b>100.0</b>	100.0	100.0	100.0	100.0	100.0	100.0	100.0	100.0	100.0
2024	<b>98.7</b>	<b>99.5</b>	102.5	97.8	97.5	96.7	91.9	97.3	97.2	101.0	96.0
2023											
Dec	<b>99.3</b>	<b>99.7</b>	99.9	100.4	97.7	97.7	97.7	98.0	98.1	100.2	99.6
2024											
Jan	<b>99.0</b>	<b>99.4</b>	101.0	98.0	97.0	97.1	98.3	98.0	97.8	99.9	98.8
Feb	<b>98.7</b>	<b>98.7</b>	101.1	98.3	97.9	98.5	96.7	99.0	97.7	98.8	98.3
Mar	<b>98.3</b>	<b>97.4</b>	101.0	98.2	97.8	101.8	86.2	99.5	97.4	96.9	97.9
Apr	<b>102.2</b>	<b>101.3</b>	101.6	97.8	97.1	104.5	94.1	100.1	97.8	102.8	97.5
May	<b>101.5</b>	<b>101.2</b>	102.0	98.6	99.3	102.3	96.9	99.2	98.1	102.9	96.8
Jun	<b>101.6</b>	<b>101.5</b>	102.1	99.1	97.1	101.8	97.4	98.2	97.9	104.1	95.3
Jul	<b>99.7</b>	<b>98.9</b>	102.8	98.7	96.2	101.7	86.6	97.9	97.8	100.0	95.4
Aug	<b>96.4</b>	<b>97.2</b>	103.0	97.2	100.1	94.5	86.3	96.3	96.9	97.7	94.3
Sep	<b>94.6</b>	<b>97.0</b>	102.7	97.5	96.8	88.5	89.4	94.3	95.9	98.1	94.1
Oct	<b>95.6</b>	<b>97.8</b>	103.3	97.1	98.0	90.1	92.2	94.6	95.9	99.1	94.9
Nov	<b>96.5</b>	<b>99.3</b>	104.0	96.5	96.8	89.3	87.8	95.2	96.4	101.6	93.7
Dec	<b>100.8</b>	<b>104.8</b>	104.8	96.3	96.1	90.5	90.6	95.4	97.3	110.5	94.9
<b>Percentage Change over same period of previous year (%)</b>											
2022	<b>18.6</b>	<b>10.0</b>	8.2	9.5	11.6	40.8	17.8	9.2	7.5	11.7	4.0
2023	<b>-6.7</b>	<b>-2.1</b>	1.5	3.8	0.8	-16.1	-21.2	-5.7	-3.9	-1.6	1.0
2024	<b>-1.3</b>	<b>-0.5</b>	2.5	-2.2	-2.5	-3.3	-8.1	-2.7	-2.8	1.0	-4.0
2023											
Dec	<b>0.9</b>	<b>-0.9</b>	-0.2	2.3	-4.7	4.5	-11.4	-3.5	-3.6	-0.4	1.8
2024											
Jan	<b>-2.7</b>	<b>-1.7</b>	1.9	0.4	-9.2	-6.9	-2.9	-2.3	-3.3	-1.7	-0.3
Feb	<b>-3.0</b>	<b>-2.3</b>	1.9	0.8	-8.2	-5.6	-4.5	-1.3	-3.5	-2.7	-0.9
Mar	<b>-2.0</b>	<b>-3.3</b>	1.1	-0.4	-7.4	3.3	-15.0	-3.4	-3.4	-3.4	-2.3
Apr	<b>2.0</b>	<b>0.5</b>	1.8	-1.8	-2.2	6.9	-4.8	-2.0	-3.4	2.1	-2.3
May	<b>2.7</b>	<b>0.9</b>	2.1	-1.9	-1.4	10.1	-1.2	-1.4	-3.1	2.7	-3.5
Jun	<b>4.4</b>	<b>2.7</b>	1.9	-1.9	-1.0	11.6	-3.5	0.2	-2.6	5.6	-5.3
Jul	<b>1.8</b>	<b>0.2</b>	2.6	-2.6	-1.3	7.4	-13.5	1.1	-2.0	1.4	-5.3
Aug	<b>-3.4</b>	<b>-1.9</b>	2.1	-4.1	2.4	-8.1	-15.1	-2.7	-2.4	-1.0	-6.0
Sep	<b>-7.1</b>	<b>-3.2</b>	2.0	-3.4	0.9	-18.3	-10.8	-6.7	-3.3	-1.9	-6.7
Oct	<b>-5.1</b>	<b>-1.9</b>	2.8	-3.4	2.9	-14.3	-7.5	-6.7	-3.3	-0.2	-5.3
Nov	<b>-3.9</b>	<b>-0.6</b>	4.4	-4.0	-1.9	-12.7	-11.2	-4.3	-2.1	1.5	-5.4
Dec	<b>1.5</b>	<b>5.1</b>	4.9	-4.1	-1.6	-7.3	-7.3	-2.6	-0.8	10.3	-4.7

**NOTATIONS**

- nes not elsewhere specified
- nil or negligible

**NOTES**

The Singapore Manufactured Products and Domestic Supply Price Indices report contains statistics that are the most recent available at the time of its preparation.

Some statistics, particularly those for the most recent time periods, are provisional and may be subject to revision in later issues.

# SINGAPORE DEPARTMENT OF STATISTICS COMMUNICATIONS & INFORMATION SERVICES

Singapore Department of Statistics (DOS) offers official statistics, data insights, visualisations and statistical resources through user-friendly platforms.



## SingStat Website

Visit this convenient gateway to access latest data and statistical information.

**Data** across the six major themes of Economy, Industry, Trade & Investment, Population, Households and Society, covering some 200 topics such as Gross Domestic Product, Consumer Price Index, Retail Sales and Food & Beverage Services Indices, Producer Price Indices, Business Expectations, Business Receipts Index, Trade in Services, Direct Investment, Population Indicators, Household Income, Household Expenditure, Deaths and Life Expectancy, Births and Fertility, Marriages and Divorces, and more.

## Publications

- Information Papers which highlight conceptual and methodological changes and improvements in official statistics.
- Occasional Papers which present statistical trends and observations on important social and economic issues to stimulate discussion and research.
- eBook of Statistics which consolidates latest information and resources on key economic and socio-demographic domains.
- Singapore in Figures which allows exploration of key economic and socio-demographic statistics through interactive dashboards.
- Statistics Singapore Newsletter which features articles on latest key statistical activities, recent survey findings and methodological improvements.

**Visualisations** such as infographics and interactive dashboards with latest data, and videos to explain data and statistical concepts.

**Data for Businesses** with data tools to empower data-driven business decisions, giving firms insights on their customers, industries and business performance.

**Advance Release Calendar** providing dates of upcoming data releases in the next six months.



## SingStat Table Builder

Access for free over 2,200 data tables across various economic and socio-demographic domains from 70 public sector agencies. Watch the [video](#) to find out how you can easily access and customise data tables.



## SingStat Mobile App

Download the app for fast and convenient access to commonly used statistics from your mobile devices. Over 260 charts are available across 38 data categories for easy access to visualise data trends.



## SingStat Express

Subscribe to receive alerts on the latest press releases, occasional/information papers and newsletters.



For statistical enquiries, you may reach us at:

✉ email: [info@singstat.gov.sg](mailto:info@singstat.gov.sg) or submit the [Data Request Form](#)

☎ phone: 1800-323 8118\* (Local users) or (65) 6332 7738 (Overseas users)

\* Calls from mobile telephone lines to 1800 local toll-free number may be subject to mobile airtime charges as imposed by the relevant mobile service provider.

Find us on social media!



@SingStat



@singstat\_dos



@SingStatvideo



@sg-department-of-statistics