

Innovation in Statistics Collection, Compilation, Dissemination and Communication to Meet Increasing Data Requirements of the ASEAN Community

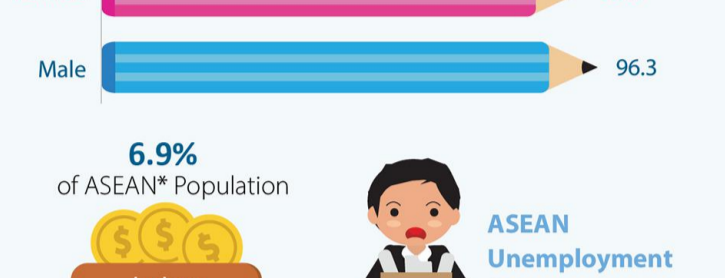
# ASEAN Statistical Highlights 2018



## Socio-Demography

ASEAN Population in 2017 reached **642.1 million** and ASEAN Population Density was **142.9 persons/km<sup>2</sup>**

ASEAN Population was **8.5%** of World Population<sup>#</sup> in 2017

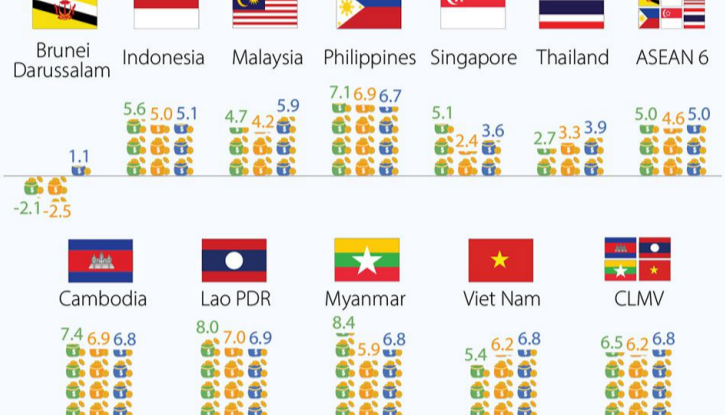


**82.7%** of ASEAN Population had access to **safe drinking water** in 2017

**76.2%** of ASEAN Population had access to **improved sanitation** in 2017

<sup>#</sup> World Population in 2017 is based on United Nations Population Division's World Population Prospects: The 2017 Revision, Key Findings and Advance Tables.

## Socio-Demography



**6.9%** of ASEAN\* Population below PPP US\$ 1.90 in 2016

ASEAN Unemployment Rate was **4.1%** in 2016

\* Not applicable to Brunei Darussalam and Singapore

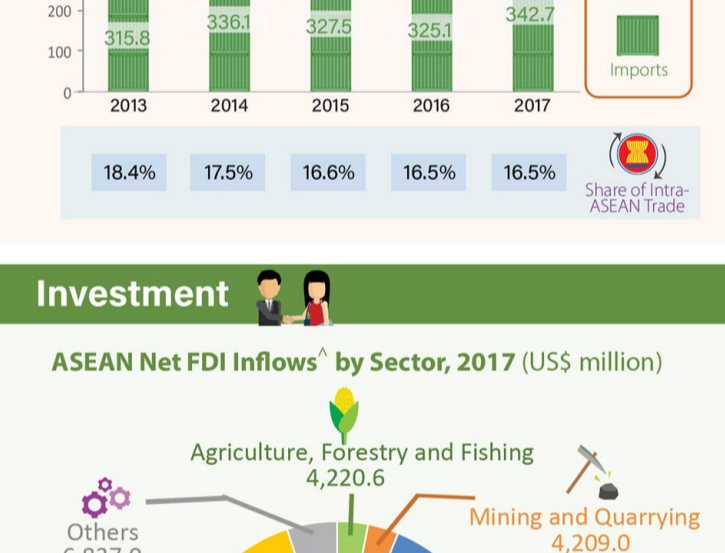
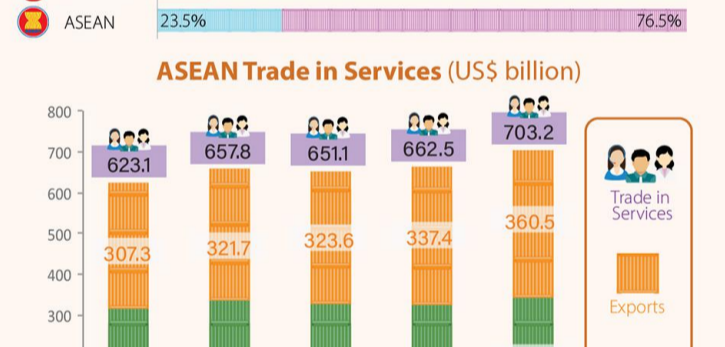
## Gross Domestic Product



ASEAN GDP was **3.3%** and **3.5%** of World GDP in 2013 and 2017 respectively

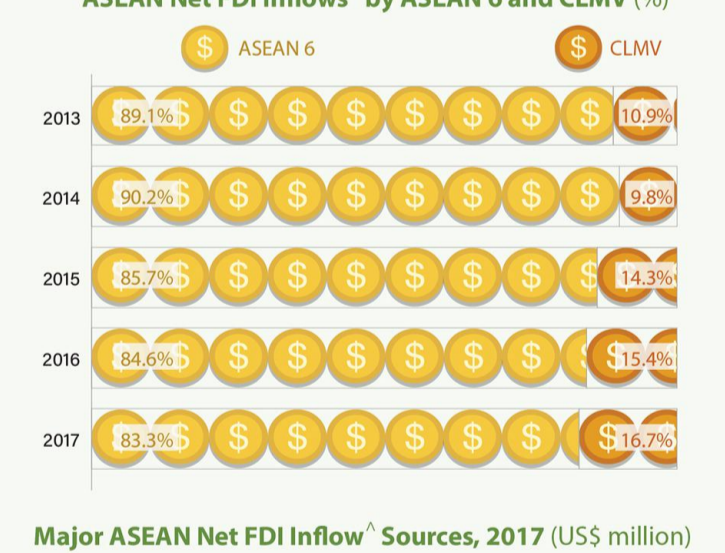
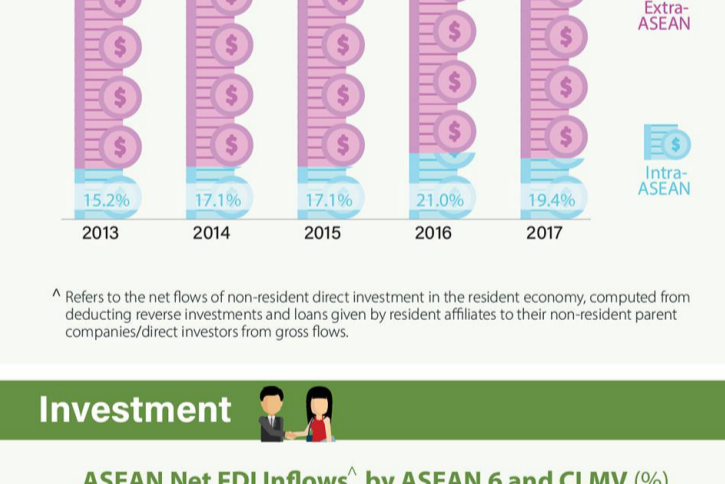


## Gross Domestic Product

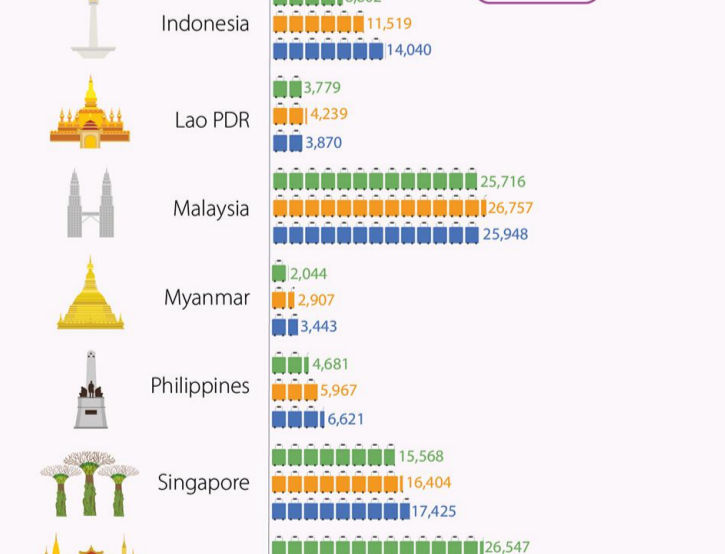


Note: Sum of these 3 sectors may not add up to 100% due to difference in the treatment of statistical discrepancy among the ASEAN Member States.

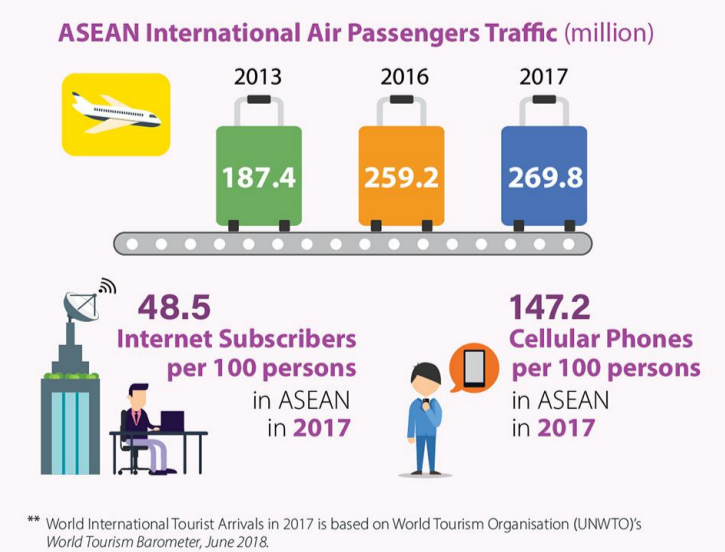
## Trade



## Trade

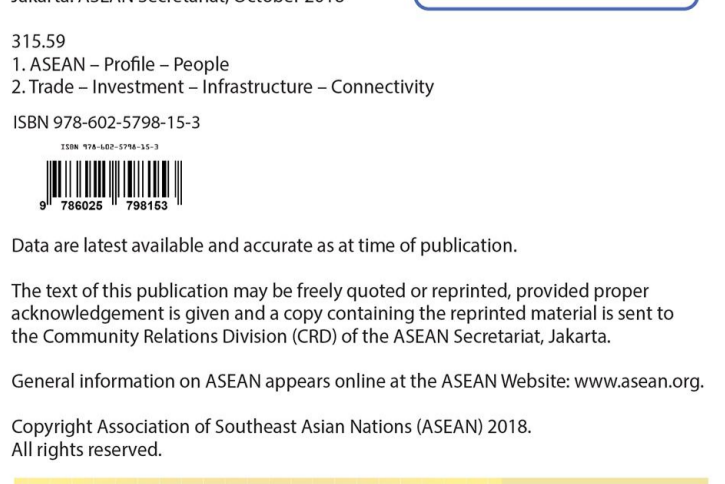


## Investment



<sup>A</sup> Refers to the net flows of non-resident direct investment in the resident economy, computed from deducting reverse investments and loans given by resident affiliates to their non-resident parent companies/direct investors from gross flows.

## Investment



## Connectivity



\* Brunei Darussalam's data on tourist arrivals for 2016 and 2017 covered only visitor arrivals by air transport.

ASEAN Tourist Arrivals was **9.5%** of World Tourist Arrivals<sup>\*\*</sup> in 2017



**48.5** Internet Subscribers per 100 persons in ASEAN in 2017

**147.2** Cellular Phones per 100 persons in ASEAN in 2017

\*\* World International Tourist Arrivals in 2017 is based on World Tourism Organisation (UNWTO)'s World Tourism Barometer, June 2018.

The Association of Southeast Asian Nations (ASEAN) was established on 8 August 1967. The Member States of the Association are Brunei Darussalam, Cambodia, Indonesia, Lao PDR, Malaysia, Myanmar, Philippines, Singapore, Thailand and Viet Nam. The ASEAN Secretariat is based in Jakarta, Indonesia.

For inquiries, contact: The ASEAN Secretariat Community Relations Division (CRD) 70A Jalan Sisingamangaraja Jakarta 12110 Indonesia Phone: (62 21) 724-3372, 726-2991 Fax: (62 21) 739-8234, 724-3504 E-mail: public@asean.org

Catalogue-in-Publication Data  
ASEAN Statistical Highlights 2018  
Jakarta: ASEAN Secretariat, October 2018

315.59  
1. ASEAN – Profile – People  
2. Trade – Investment – Infrastructure – Connectivity  
ISBN 978-602-5598-15-3



Data are latest available and accurate as at time of publication.

The text of this publication may be freely copied or reprinted, provided proper acknowledgement is given and a copy containing the reprinted material is sent to the Community Relations Division (CRD) of the ASEAN Secretariat, Jakarta.

General information on ASEAN appears online at the ASEAN Website: [www.asean.org](http://www.asean.org).

Copyright Association of Southeast Asian Nations (ASEAN) 2018. All rights reserved.

