

Monthly Deaths in Singapore, 2012

Introduction

Under the Registration of Births and Deaths Act, all deaths occurring within Singapore and its territorial waters are required to be registered within 3 days of the occurrence.

Based on administrative data from the Registry of Births and Deaths, Immigration and Checkpoints Authority, 18,481 deaths¹ were registered in Singapore in 2012. This translated to an average of 50 deaths registered per day.

Monthly Deaths

In 2012, the average number of deaths registered per day was the highest in May at 54, followed by June at 52. The months of March and November had the lowest number of deaths registered per day at 49 (Chart 1).

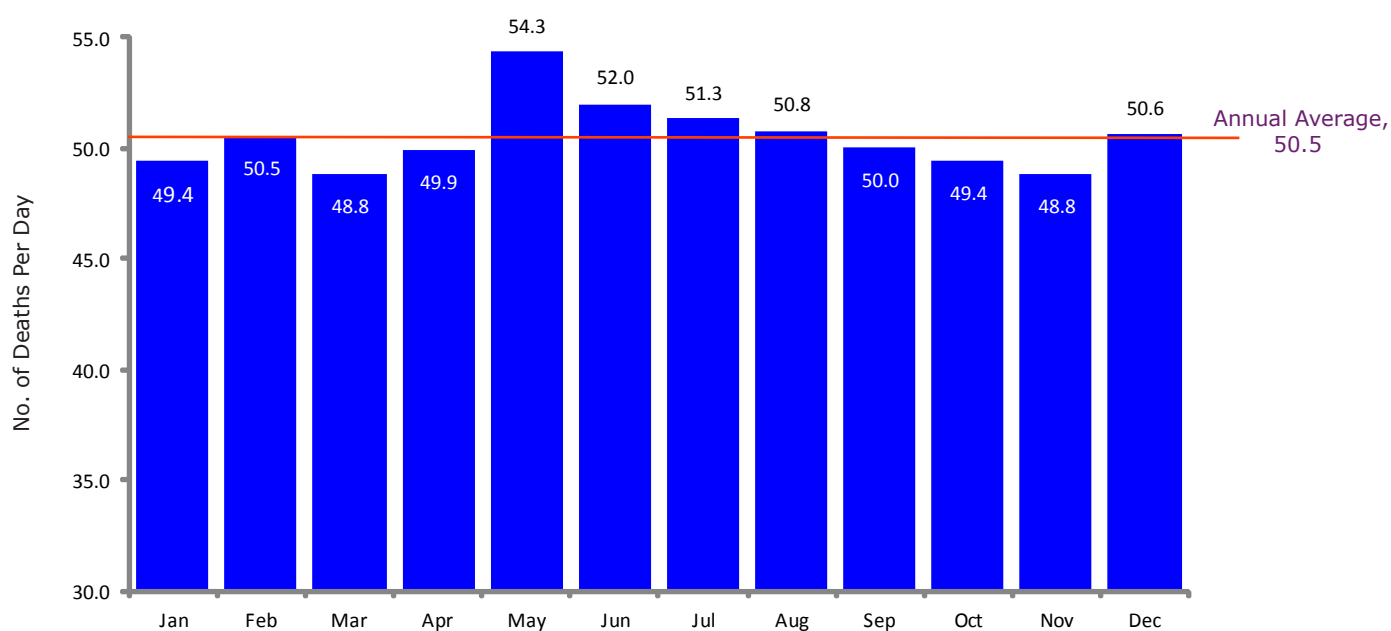
Major Causes of Deaths

In 2012, over 94% of annual total deaths were due to natural causes (Table 1). The remaining 6% were due to non-natural causes of death such as accidents, suicides and other external injuries.

Deaths due to malignant neoplasms (i.e. cancer) were the biggest contributors among total deaths in 2012, making up some 27%-32% each month (Chart 2).

This was followed by deaths due to heart & hypertensive diseases (including ischaemic heart diseases) at some 19%-23% each month, and deaths due to lung & respiratory system diseases (including pneumonia) at some 17%-23% each month. Cerebrovascular disease (including stroke) were behind some 7%-12% of total deaths each month.

CHART 1 AVERAGE DAILY NUMBER OF TOTAL DEATHS BY MONTH, 2012

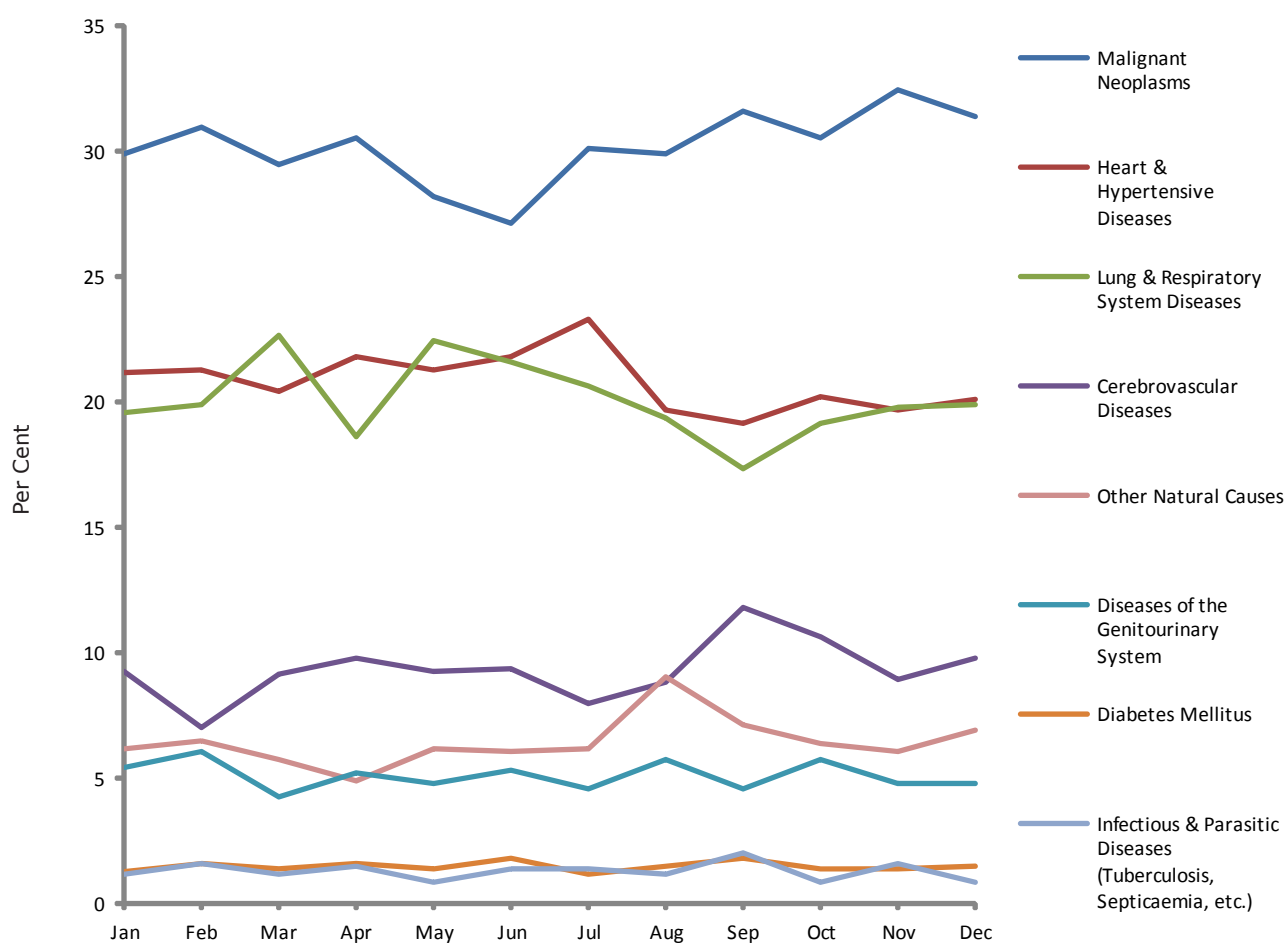


¹ Data pertain to total population, which comprises Singapore residents (i.e. Singapore citizens and permanent residents) and non-residents.

TABLE 1 MAJOR CAUSES OF TOTAL DEATHS BY MONTH, 2012

Month	All Causes	Natural Causes	Per Cent
			Accidents and Violence (All Forms)
Total	100.0	94.4	5.6
Jan	100.0	93.5	6.5
Feb	100.0	94.5	5.5
Mar	100.0	93.9	6.1
Apr	100.0	94.1	5.9
May	100.0	93.9	6.1
Jun	100.0	94.3	5.7
Jul	100.0	94.8	5.2
Aug	100.0	94.9	5.1
Sep	100.0	95.1	4.9
Oct	100.0	94.8	5.2
Nov	100.0	94.2	5.8
Dec	100.0	95.0	5.0

CHART 2 MAJOR NATURAL CAUSES OF TOTAL DEATHS BY MONTH, 2012



Note: The causes of death are adapted from the Mortality Tabulation List of the International Classification of Diseases - Tenth Revision.